



Websters  
estate agents

# Waldegrave Road, Teddington, TW11 8LS

Second Floor 2 double bedroom apartment in a popular Teddington development with a private balcony, entry phone access, use of mature communal gardens and some residents parking. Situated 0.3 miles from town centre shops, cafes and restaurants and 0.5 miles from Teddington train station.

With no onward chain, a newly extended Lease and tastefully presented to offer 639 sq ft of well proportioned living space with modern fixtures, fittings, wood style flooring, large double glazed windows and neutral decor throughout.

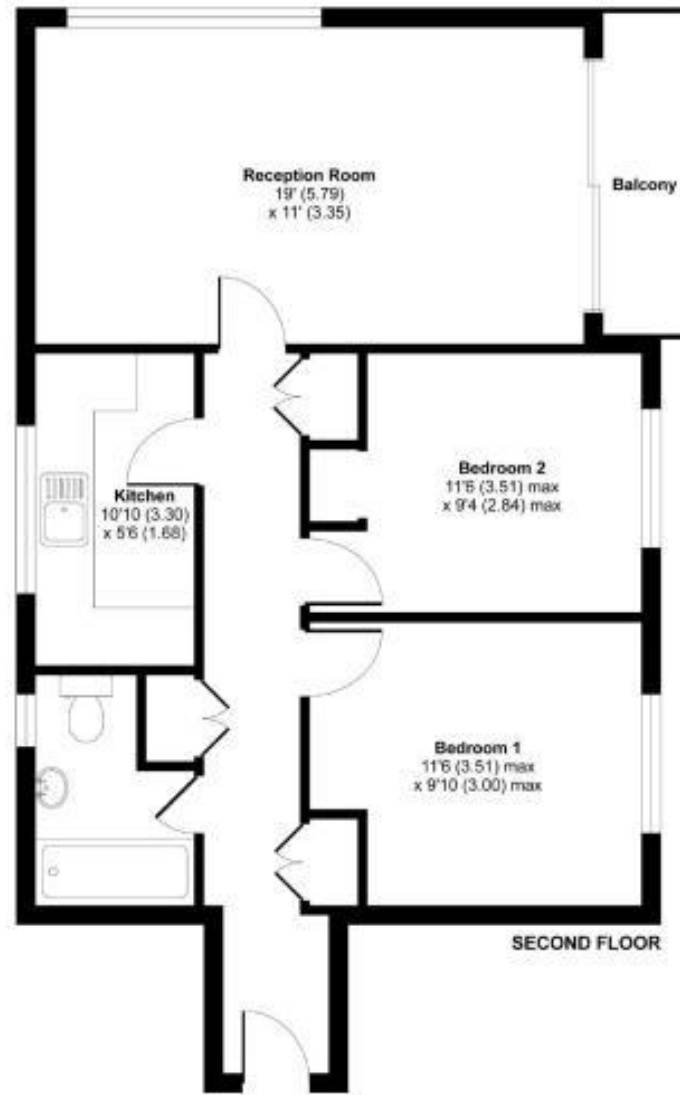
Entrance hallway leads to built in storage, the family bathroom, the 2 double bedrooms with built in wardrobes, the stylish fitted kitchen and the separate dual aspect living/dining with a balcony and views across the garden.

Located less than 0.8 miles from Bushy Park and Teddington footbridge across the Thames to the Lock, Ham Lands and towpath walks to Hampton Court Palace and Richmond.

EPC Rating C

- Second Floor 2 Bedroom Apartment
- Communal Gardens and Some Residents Parking
- No Onward Chain and Newly Extended Lease
- Private Balcony Overlooking Gardens
- Living/Dining Room and Separate Kitchen
- 0.3 Miles from Town Centre
- 0.5 Miles from Teddington Station





APPROX. GROSS INTERNAL FLOOR AREA 639 SQFT / 59.4 SQM

a Websters Estate Agents 36 Broad Street, Teddington, Middlesex TW11 8QY

t 020 8614 6000

e sales@mywebsters.co.uk w mywebsters.co.uk

**Disclaimer**

These particulars, whilst believed to be accurate are set out as a general outline only for guidance and do not constitute any part of an offer or contract. Intending purchasers should not rely on them as statements of representation of fact, but must satisfy themselves by inspection or otherwise as to their accuracy. We have not carried out a detailed survey nor tested the services, appliances and specific fittings. Room sizes should not be relied upon for carpets and furnishings. The measurements given are approximate. No person in this firm's employment has the authority to make or give any representation or warranty in respect of the property.

