



Sinderby Close, Borehamwood

£625,000

L&Hresidential
laminghope.com sales & lettings

Sinderby Close

Borehamwood

A stunningly presented four double bedroom three bathroom end of terraced house located a short walk to local schools, shops, park and bus routes.

Tenure: Freehold

- Stunningly presented four double bedroom end of terrace house (1690sqft)
- Three bathrooms (one on ground floor)
- Spacious Kitchen/breakfast room
- 21ft living room
- Utility room/playroom
- Underfloor heating throughout ground floor
- Large private garden
- Short walk to local schools, shops, park and bus routes.
- On street parking
- CHAIN FREE



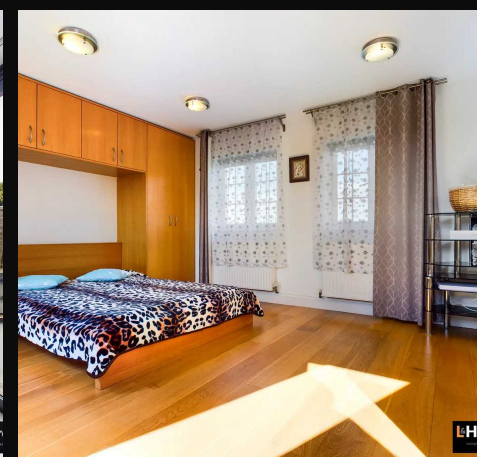
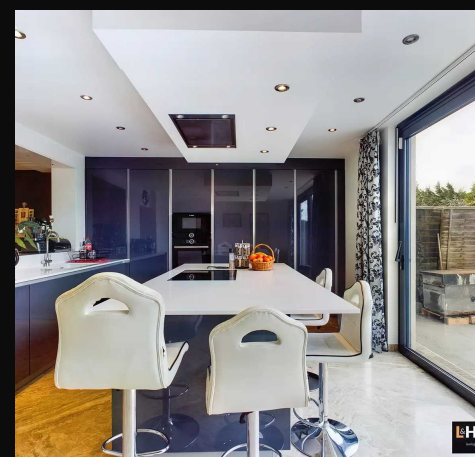
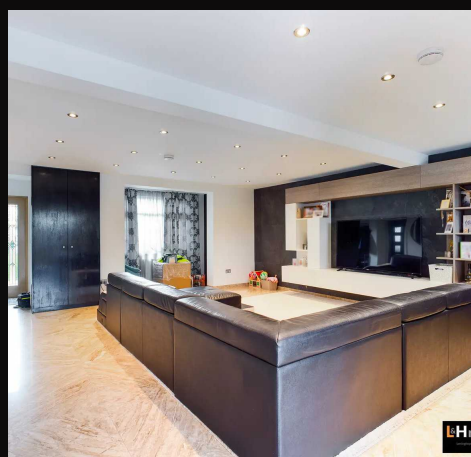
L&Hresidential
laminghope.com sales & lettings

Borehamwood - 0203 617 1333

Scott Magor

e scott@laminghope.com

t +44 7572 958 043



You can include any text here. The text can be modified upon generating your brochure.



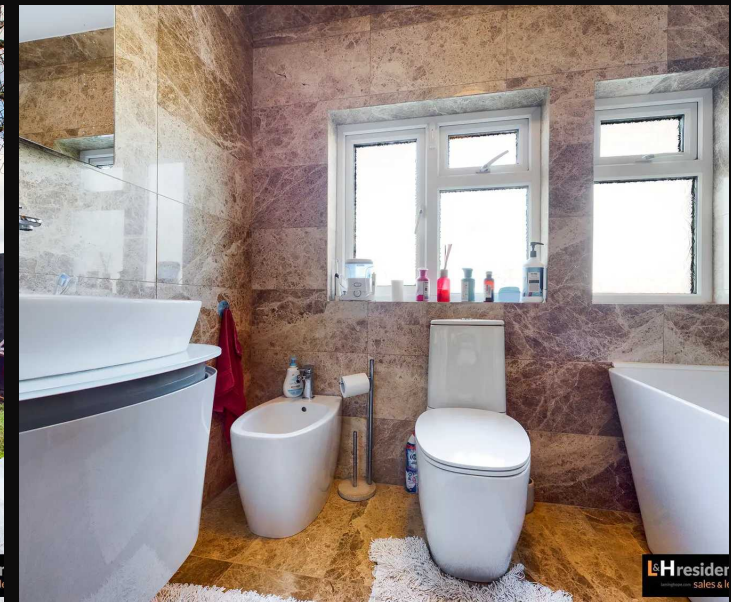
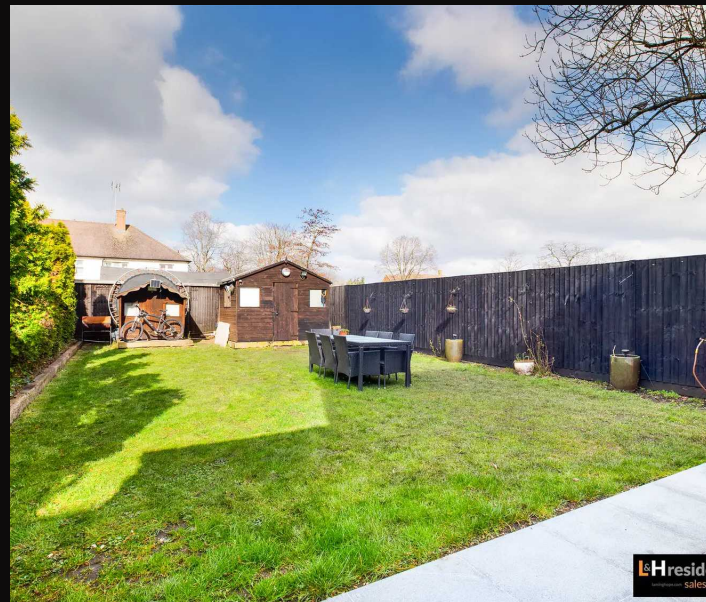
L&Hresidential
laminghope.com sales & lettings

Borehamwood - 0203 617 1333

Scott Magor

e scott@laminghope.com

t +44 7572 958 043





Ground Floor Building 1



Floor 1 Building 1



Floor 2 Building 1

Approximate total area⁽¹⁾

1694.90 ft²

157.46 m²

Reduced headroom

33.86 ft²

3.15 m²

(1) Excluding balconies and terraces

Reduced headroom
(below 1.5m/4.92ft)

While every attempt
ensure accuracy, all
approximate, not t
plan is for illustrati

WHERE TO FIND US

Borehamwood Branch:
12 Shenley Road,
Borehamwood,
Hertfordshire,
WD6 1DL

GIRAFF

Telephone: 020 3617 1333
Email: enquiries@laminghope.com