

8A Sun Street
Waltham Abbey
Essex
EN9 1EE

T: 01992 652006
www.kings-group.net



Pick Hill, EN9 3LE



Asking Price £1,199,995 Freehold



Kings Group is delighted to present for sale this spacious detached home, offering approximately 3000 square feet of living space. The property includes a 2-bedroom annexe, providing versatile accommodation suitable for a larger family or potential development (subject to obtaining the necessary planning permissions), transforming it into a single large dwelling.

The main house features 3 bedrooms, 2 reception rooms, a generously sized study, a large utility room, and a cloakroom. The annexe, which can be accessed from both the main house and its own separate entrance, comprises a reception room, kitchen diner, study, and wetroom. There are stairs leading to the first floor, which hosts 2 additional bedrooms and a bathroom.

One of the standout features of this property is its expansive garden, measuring approximately 0.80 of an acre. The garden is laid to lawn with mature trees, and a spacious patio area at the rear. Additionally, the property offers off-street parking, capable of accommodating numerous vehicles and double garage. Council Tax Band G. EPC Rating E.

Call Kings Group now on 01992 652 006 to arrange your viewing and avoid disappointment!

HALL

LIVING ROOM 19'5 x 11'11

DINING ROOM 11'3 x 8'10

STUDY 17'10 x 7'11

KITCHEN 12'8 x 9'6

UTILITY 14' x 10'3

STORAGE CUPBOARDS

LANDING

BEDROOM 20'11 x 11'11

BEDROOM 12'10 x 9'8

BEDROOM 9'8 x 8'11

BATHROOM 7'10 x 7'9

ANNEX

RECEPTION 12'3 x 12'2

KITCHEN DINER 12'2 x 11'

STUDY 7'4 x 5'8

WETROOM

LANDING

BEDROOM 18'11 x 9'3

BEDROOM 10'2 x 8'10

BATHROOM 10'2 x 6'4

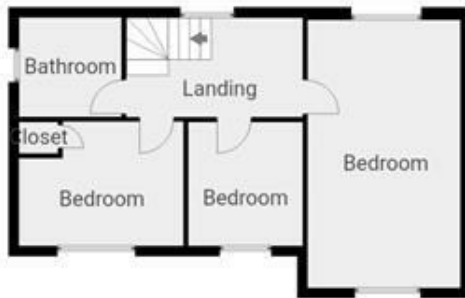
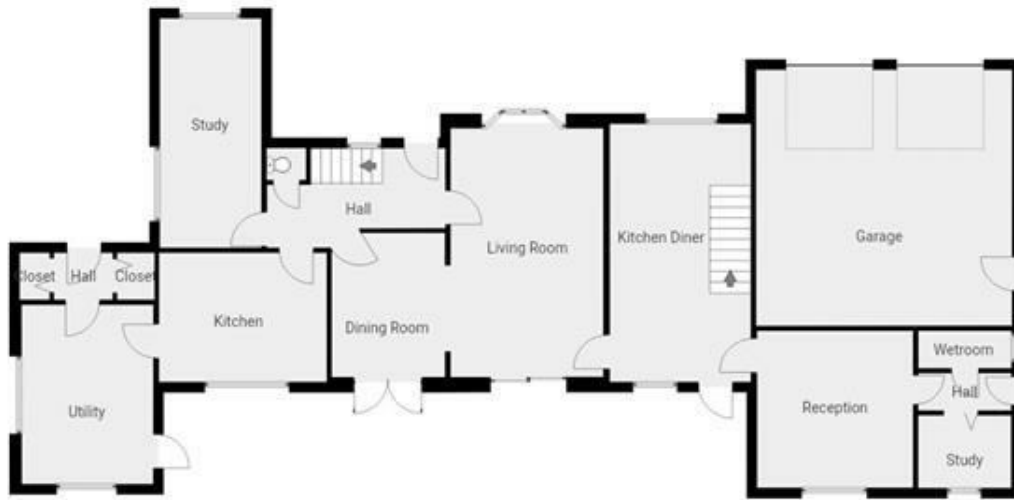
GARAGE

GARDEN

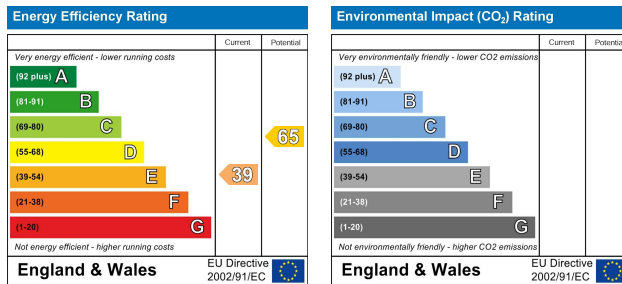
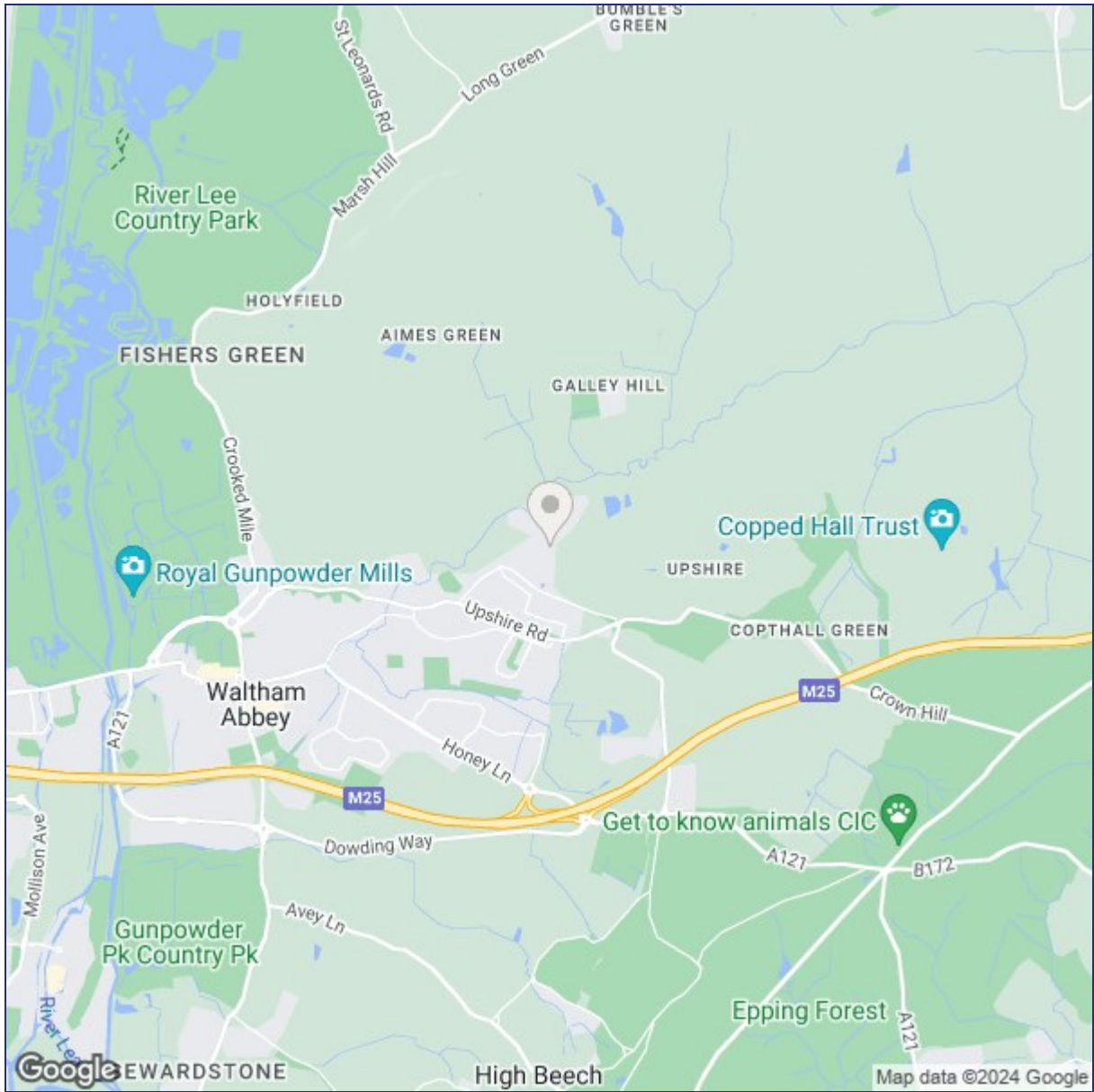
Disclaimer

1. MONEY LAUNDERING REGULATIONS: Intending purchasers will be asked to produce identification documentation at a later stage and we would ask for your co-operation in order that there will be no delay in agreeing the sale.
2. General: While we endeavor to make our sales particulars fair, accurate and reliable, they are only a general guide to the property and, accordingly, if there is any point which is of particular importance to you, please contact the office and we will be pleased to check the position for you
3. The measurements indicated are supplied for guidance only and as such must be considered incorrect.
4. Services: Please note we have not tested the services or any of the equipment or appliances in this property, accordingly we strongly advise prospective buyers to commission their own survey or service reports before finalising their offer to purchase.
5. References to tenure of a property are based upon information supplied by the vendor. The agent has not had sight of the title documents, a buyer is advised to obtain verification from their solicitor.
6. THESE PARTICULARS ARE ISSUED IN GOOD FAITH BUT DO NOT CONSTITUTE REPRESENTATIONS OF FACT OR FORM PART OF ANY OFFER OR CONTRACT. THE MATTERS REFERRED TO IN THESE PARTICULARS SHOULD BE INDEPENDENTLY VERIFIED BY PROSPECTIVE BUYERS OR TENANTS. KINGS GROUP NOR ANY OF ITS EMPLOYEES OR AGENTS HAS ANY AUTHORITY TO MAKE OR GIVE ANY REPRESENTATION OR WARRANTY WHATSOEVER IN RELATION TO THIS PROPERTY.





THIS FLOORPLAN IS PROVIDED WITHOUT WARRANTY OF ANY KIND. SENSOPIA DISCLAIMS ANY WARRANTY INCLUDING, WITHOUT LIMITATION, SATISFACTORY QUALITY OR ACCURACY OF DIMENSIONS.



("These details are correct at time of going to press").

THE PROPERTY MISDESCRIPTIONS ACT 1991. The agent has not tested any apparatus, equipment, fixtures or services and so cannot verify that they are in working order, or fit for the purpose. References to the Tenure of a property are based on information supplied by the vendor. The agent has not had sight of the Title documents. A buyer is advised to obtain verification from their Solicitor or Surveyor.

