

8A Sun Street
Waltham Abbey
Essex
EN9 1EE

T: 01992 652006
www.kings-group.net



Paradise Road, EN9 1RL



Asking Price £375,000 Freehold



Kings Group is presenting this 2-bedroom period property for sale. Upon entry, you'll find a hallway leading to a spacious living and dining area, both featuring fireplaces. The kitchen boasts base and eye-level units with roll-top surfaces and tiled backsplashes, along with a convenient pantry cupboard. Upstairs, there are two double bedrooms and a family bathroom. Out back, there's a partially paved and laid to lawn garden with a storage shed. The property, constructed with brick and tile, is equipped with mains water, electricity, and gas heating.

Nestled on a peaceful residential road in the heart of Waltham Abbey, just a minutes walk to the historic market town square and all the amenities its pedestrianised high street has to offer. Also just a 15 min walk or 5 min drive to Waltham Cross British Rail station and 10 mins to J26 of the M25, you are perfectly placed for commuting. Also falling into the catchment area for some great local schools.

Call our Waltham Abbey office on 01992 652 006 to arrange your viewing and avoid disappointment!

Council Tax Band C
EPC Rating TBC

Coverage
Mobile (based on calls indoors)
O2 - Good
EE - Good
Three - Good
Vodafone - Good

Broadband (estimated speeds)
Standard 12 mbps
Superfast 80 mbps
Ultrafast 1000 mbps

Satellite & Cable TV Availability
BT - Good
Sky - Good
Virgin - Good

ENTRANCE HALL

LIVING ROOM 11'11 x 11'8

DINING ROOM 11'10 x 9'7

KITCHEN 10'4 x 7'7

PANTRY

LANDING

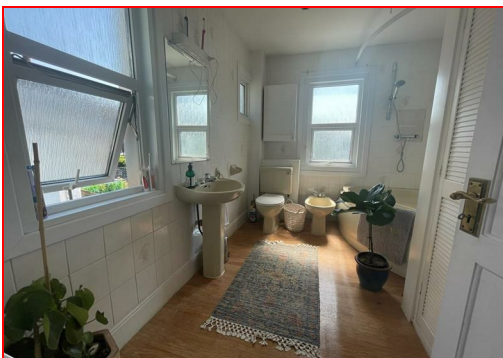
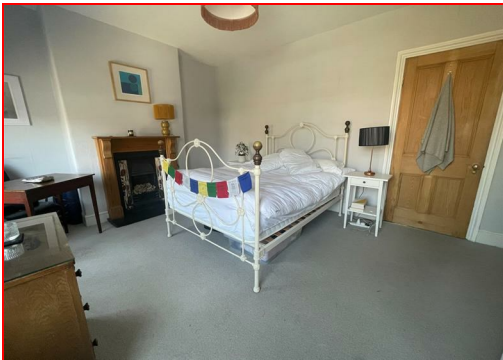
BEDROOM 12'2 x 12'

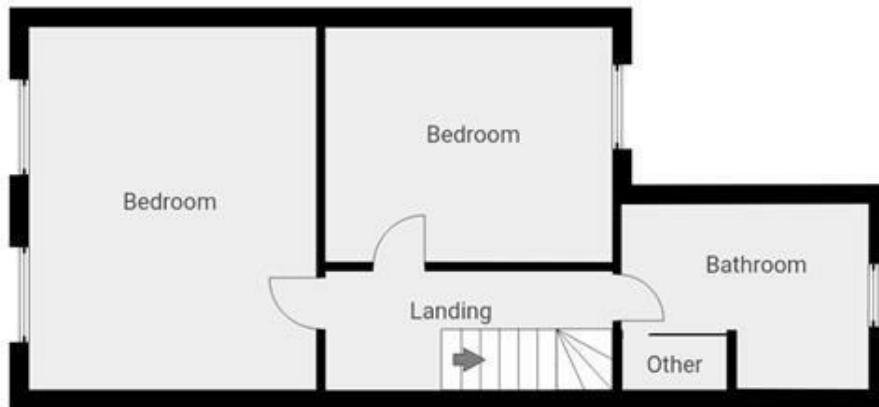
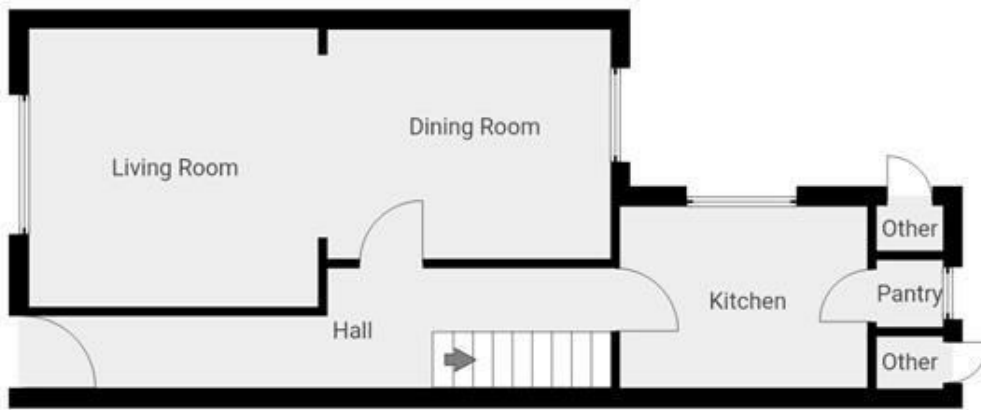
BEDROOM 11'11 x 9'8

BATHROOM 10'4 x 7'9

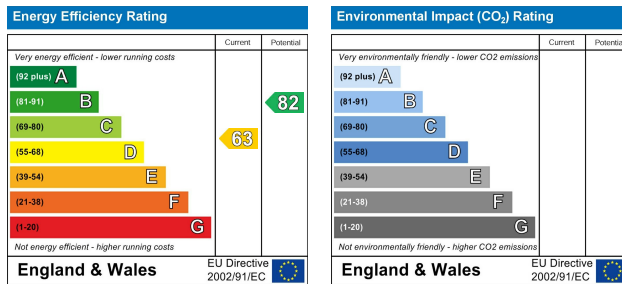
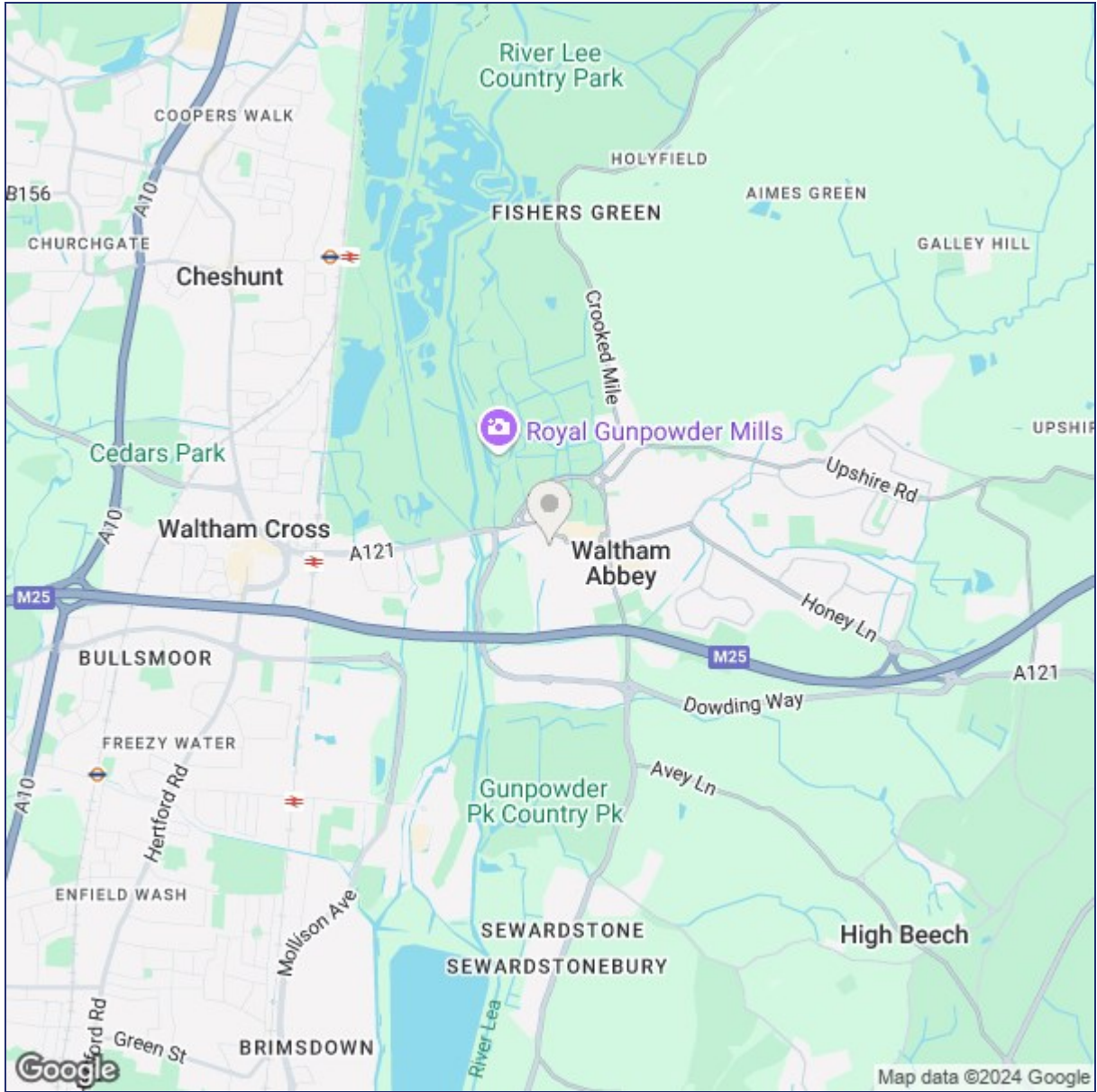
DISCLAIMER

1. MONEY LAUNDERING REGULATIONS: Intending purchasers will be asked to produce identification documentation at a later stage and we would ask for your co-operation in order that there will be no delay in agreeing the sale.
2. General: While we endeavour to make our sales particulars fair, accurate and reliable, they are only a general guide to the property and, accordingly, if there is any point which is of particular importance to you, please contact the office and we will be pleased to check the position for you
3. The measurements indicated are supplied for guidance only and as such must be considered incorrect.
4. Services: Please note we have not tested the services or any of the equipment or appliances in this property, accordingly we strongly advise prospective buyers to commission their own survey or service reports before finalising their offer to purchase.
5. References to tenure of a property are based upon information supplied by the vendor. The agent has not had sight of the title documents, a buyer is advised to obtain verification from their solicitor.
6. THESE PARTICULARS ARE ISSUED IN GOOD FAITH BUT DO NOT CONSTITUTE REPRESENTATIONS OF FACT OR FORM PART OF ANY OFFER OR CONTRACT. THE MATTERS REFERRED TO IN THESE PARTICULARS SHOULD BE INDEPENDENTLY VERIFIED BY PROSPECTIVE BUYERS OR TENANTS. KINGS GROUP NOR ANY OF ITS EMPLOYEES OR AGENTS HAS ANY AUTHORITY TO MAKE OR GIVE ANY REPRESENTATION OR WARRANTY WHATSOEVER IN RELATION TO THIS PROPERTY.





THIS FLOORPLAN IS PROVIDED WITHOUT WARRANTY OF ANY KIND. SENSOPIA DISCLAIMS ANY WARRANTY INCLUDING, WITHOUT LIMITATION, SATISFACTORY QUALITY OR ACCURACY OF DIMENSIONS.



("These details are correct at time of going to press").

THE PROPERTY MISDESCRIPTIONS ACT 1991. The agent has not tested any apparatus, equipment, fixtures or services and so cannot verify that they are in working order, or fit for the purpose. References to the Tenure of a property are based on information supplied by the vendor. The agent has not had sight of the Title documents. A buyer is advised to obtain verification from their Solicitor or Surveyor.

