

8A Sun Street
Waltham Abbey
Essex
EN9 1EE

T: 01992 652006
www.kings-group.net



Harold Crescent, EN9 1QT



Offers In Excess Of £430,000 Freehold



Kings Group Waltham Abbey offers a three-bedroom semi-detached house. The ground floor features two reception rooms, a conservatory, and a fitted kitchen with white base & eye level units, granite work surfaces, and tiled splashbacks. On the first floor, you'll find two double bedrooms, a single bedroom, and a family bathroom. The property includes a 40ft rear garden with an out house featuring running electricity. Potential for extension (STPP). Council Tax Band D. EPC D.

Conveniently located near local shops and amenities, including Lea Valley Park. This family home is within the catchment areas of sought-after schools such as Holy Cross Primary and Hill House Primary. Internal viewing is recommended; contact Kings now to arrange your viewing.

PORCH

HALLWAY

LIVING ROOM 17'9 x 10'10

DINING ROOM 10'8 x 10'2

KITCHEN 15'0 x 13'10

CONSERVATORY 10'10 x 7'3

LANDING

BEDROOM 12'6 x 10'8

BEDROOM 10'10 x 8'10

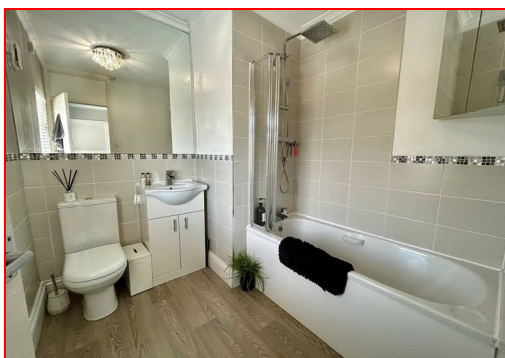
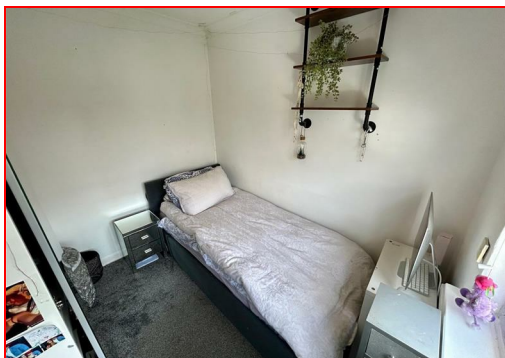
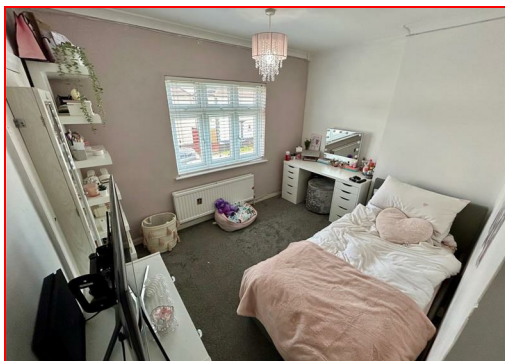
BEDROOM 10'10 x 8'10

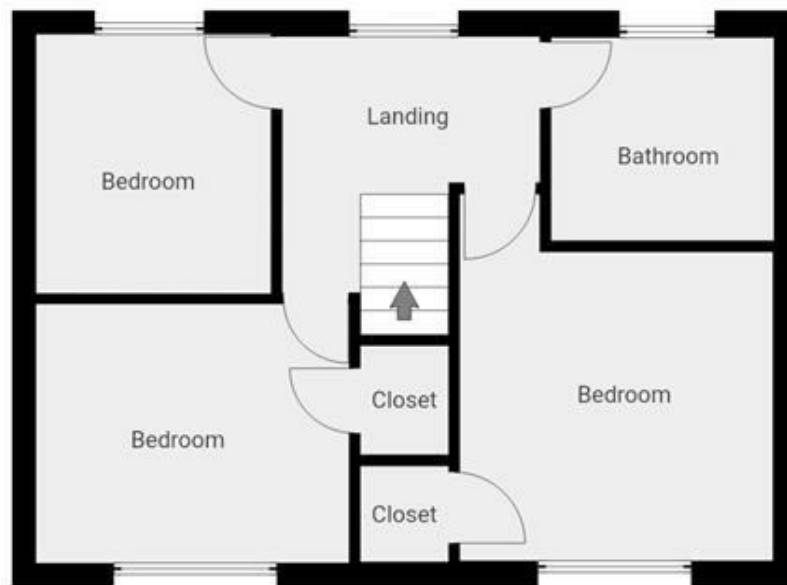
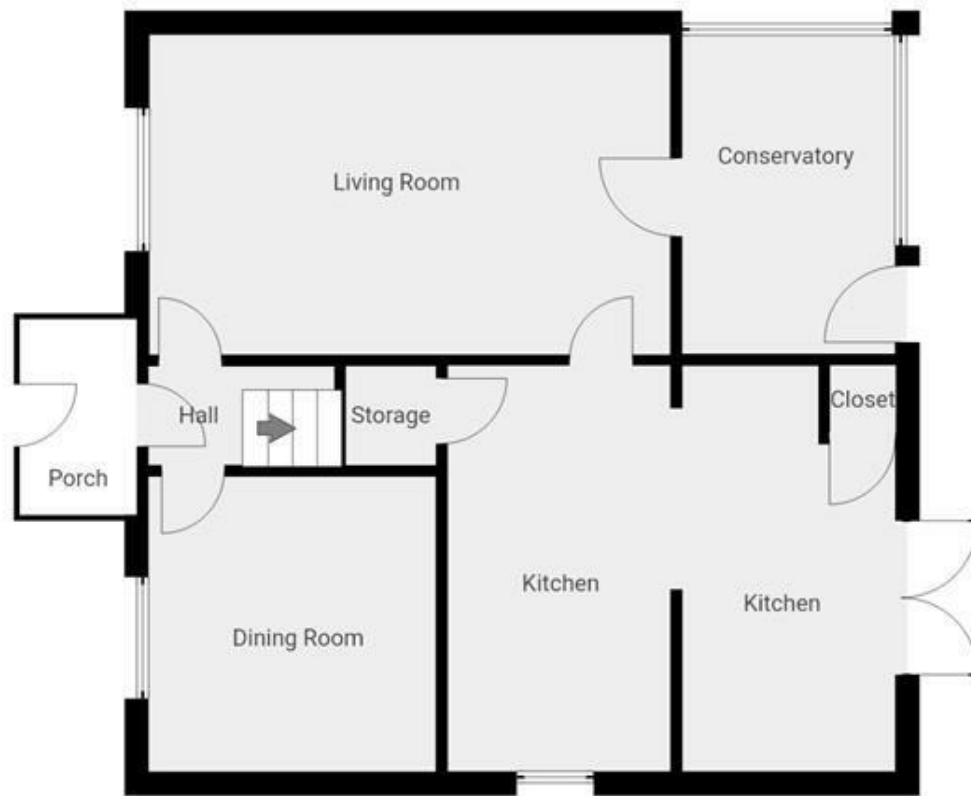
BATHROOM

OUT HOUSE

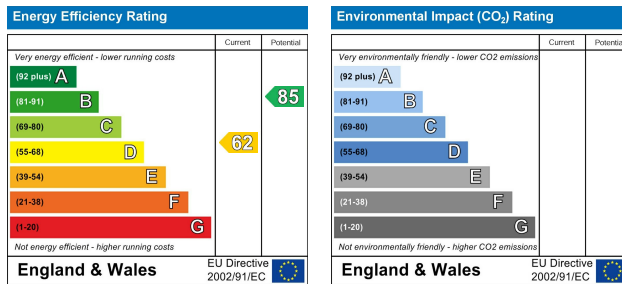
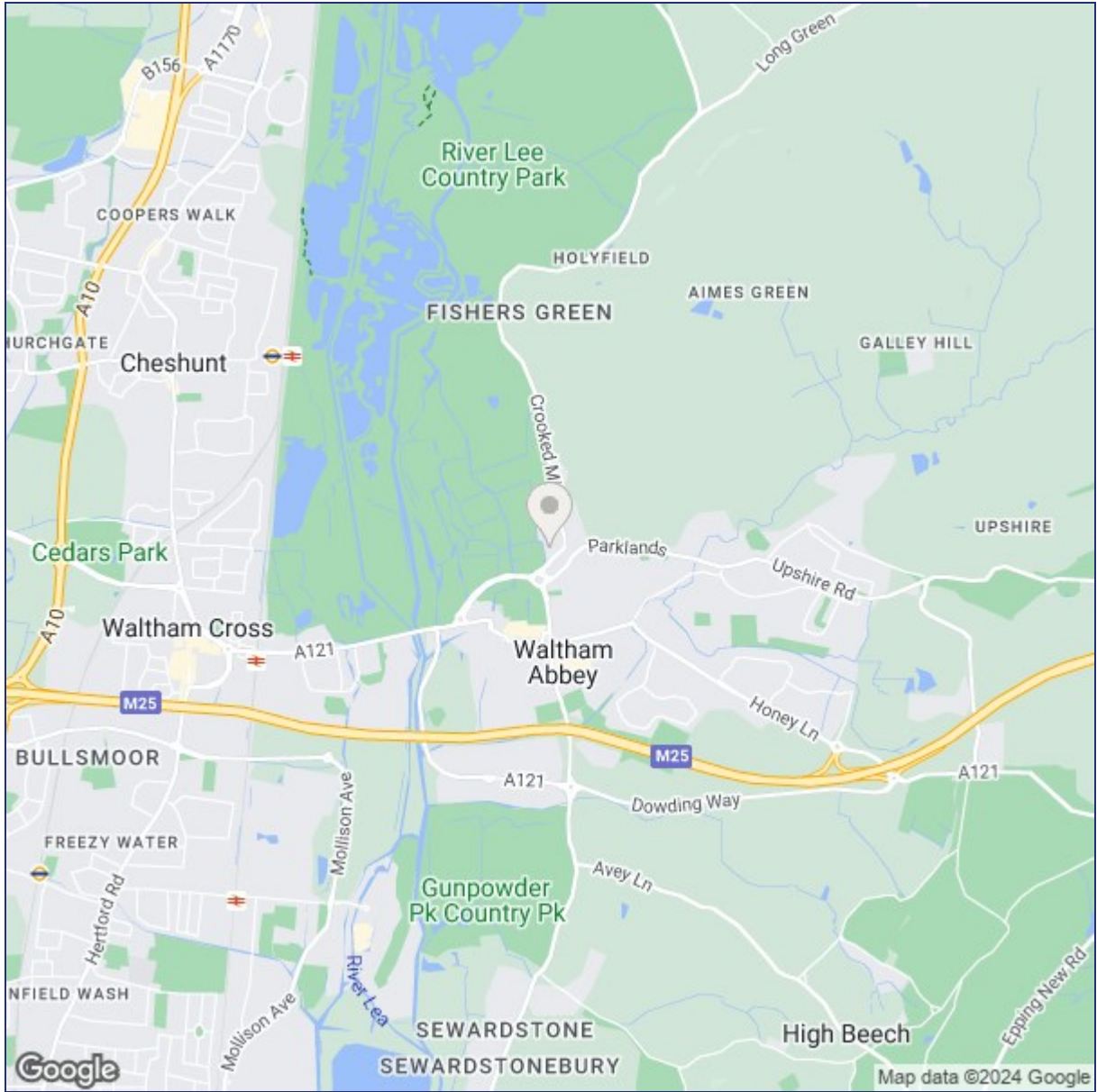
Disclaimer

1. MONEY LAUNDERING REGULATIONS: Intending purchasers will be asked to produce identification documentation at a later stage and we would ask for your co-operation in order that there will be no delay in agreeing the sale.
2. General: While we endeavor to make our sales particulars fair, accurate and reliable, they are only a general guide to the property and, accordingly, if there is any point which is of particular importance to you, please contact the office and we will be pleased to check the position for you
3. The measurements indicated are supplied for guidance only and as such must be considered incorrect.
4. Services: Please note we have not tested the services or any of the equipment or appliances in this property, accordingly we strongly advise prospective buyers to commission their own survey or service reports before finalising their offer to purchase.
5. References to tenure of a property are based upon information supplied by the vendor. The agent has not had sight of the title documents, a buyer is advised to obtain verification from their solicitor.
6. THESE PARTICULARS ARE ISSUED IN GOOD FAITH BUT DO NOT CONSTITUTE REPRESENTATIONS OF FACT OR FORM PART OF ANY OFFER OR CONTRACT. THE MATTERS REFERRED TO IN THESE PARTICULARS SHOULD BE INDEPENDENTLY VERIFIED BY PROSPECTIVE BUYERS OR TENANTS. KINGS GROUP NOR ANY OF ITS EMPLOYEES OR AGENTS HAS ANY AUTHORITY TO MAKE OR GIVE ANY REPRESENTATION OR WARRANTY WHATEVER IN RELATION TO THIS PROPERTY.





THIS FLOORPLAN IS PROVIDED WITHOUT WARRANTY OF ANY KIND. SENSOPIA DISCLAIMS ANY WARRANTY INCLUDING, WITHOUT LIMITATION, SATISFACTORY QUALITY OR ACCURACY OF DIMENSIONS.



("These details are correct at time of going to press").

THE PROPERTY MISDESCRIPTIONS ACT 1991. The agent has not tested any apparatus, equipment, fixtures or services and so cannot verify that they are in working order, or fit for the purpose. References to the Tenure of a property are based on information supplied by the vendor. The agent has not had sight of the Title documents. A buyer is advised to obtain verification from their Solicitor or Surveyor.

