

8A Sun Street
Waltham Abbey
Essex
EN9 1EE

T: 01992 652006
www.kings-group.net



Breach Barns Lane, EN9 2AD



Asking Price £125,000 Freehold



Absolute Property is delighted to present this wonderful two-bedroom park home located in Waltham Abbey, offering a peaceful and convenient lifestyle for those over 55. This property provides easy access to the M25 and a convenient bus service into town, making it an ideal choice for retirees looking for tranquility and accessibility.

Key Features:

- Spacious lounge/diner with wood laminate flooring, an electric fireplace, and ample natural light through two bay windows.
- Modern kitchen with a range of eye and base level cabinets, a porcelain sink unit, and a breakfast bar.
- Two comfortable bedrooms, with the master bedroom featuring built-in storage.
- Well-maintained family bathroom with a three-piece suite and heated towel rail.
- Double glazing and gas central heating for added comfort.
- Allocated parking space for your convenience.
- Enjoy a secluded rear garden with a block-paved patio, perfect for outdoor relaxation.
- The front garden features a well-maintained lawn and a paved pathway leading to the front door.



This property offers a lovely retreat for those seeking a peaceful living environment, and it's highly recommended for viewing. Don't miss the opportunity to make this park home your own.

HALLWAY

LIVING ROOM 18'8 x 10'9

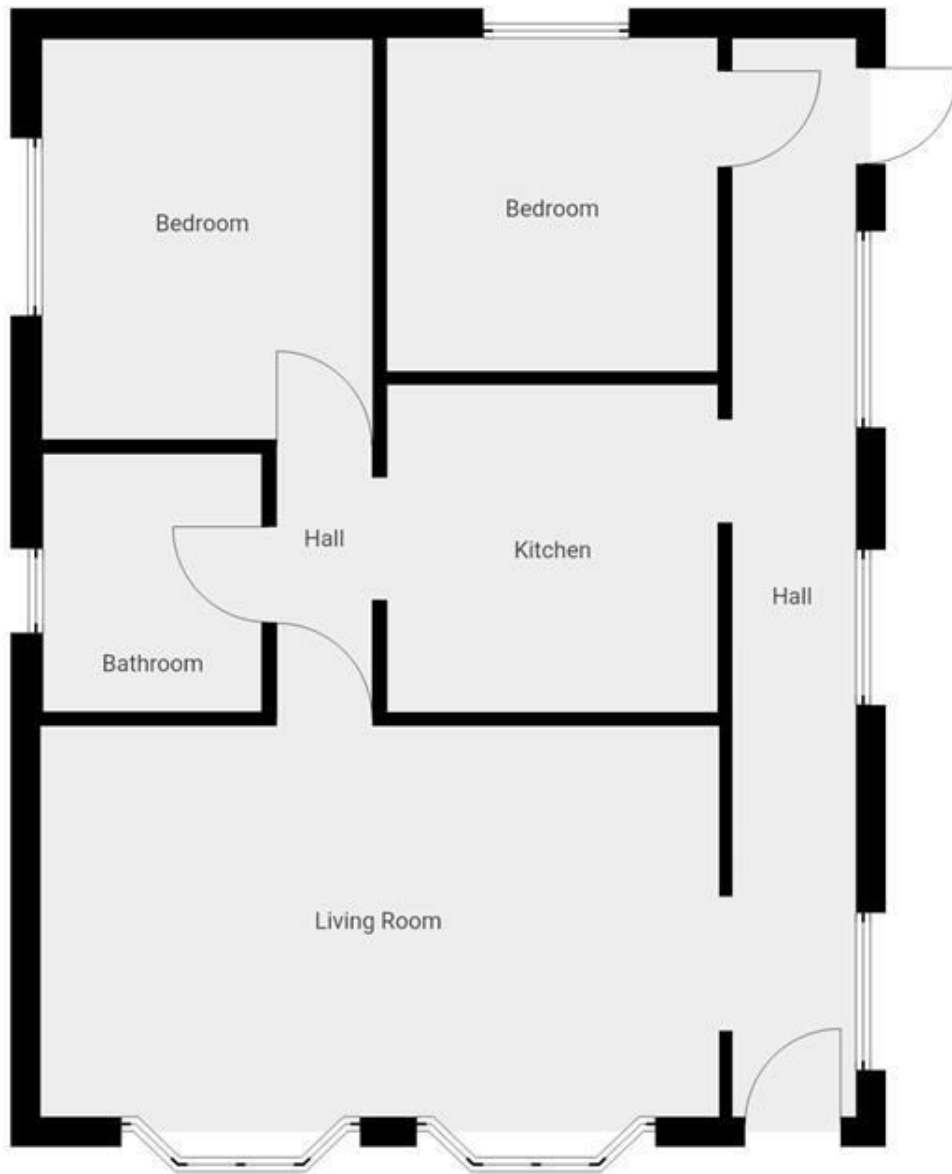
KITCHEN 9'1 x 9'0

BEDROOM 11'0 x 9'1

BEDROOM 9'2 x 9'1

BATHROOM 7'1 x 6'0



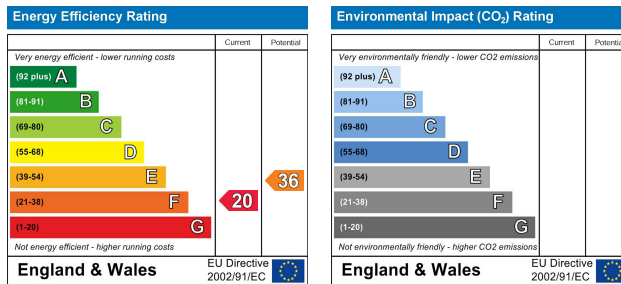
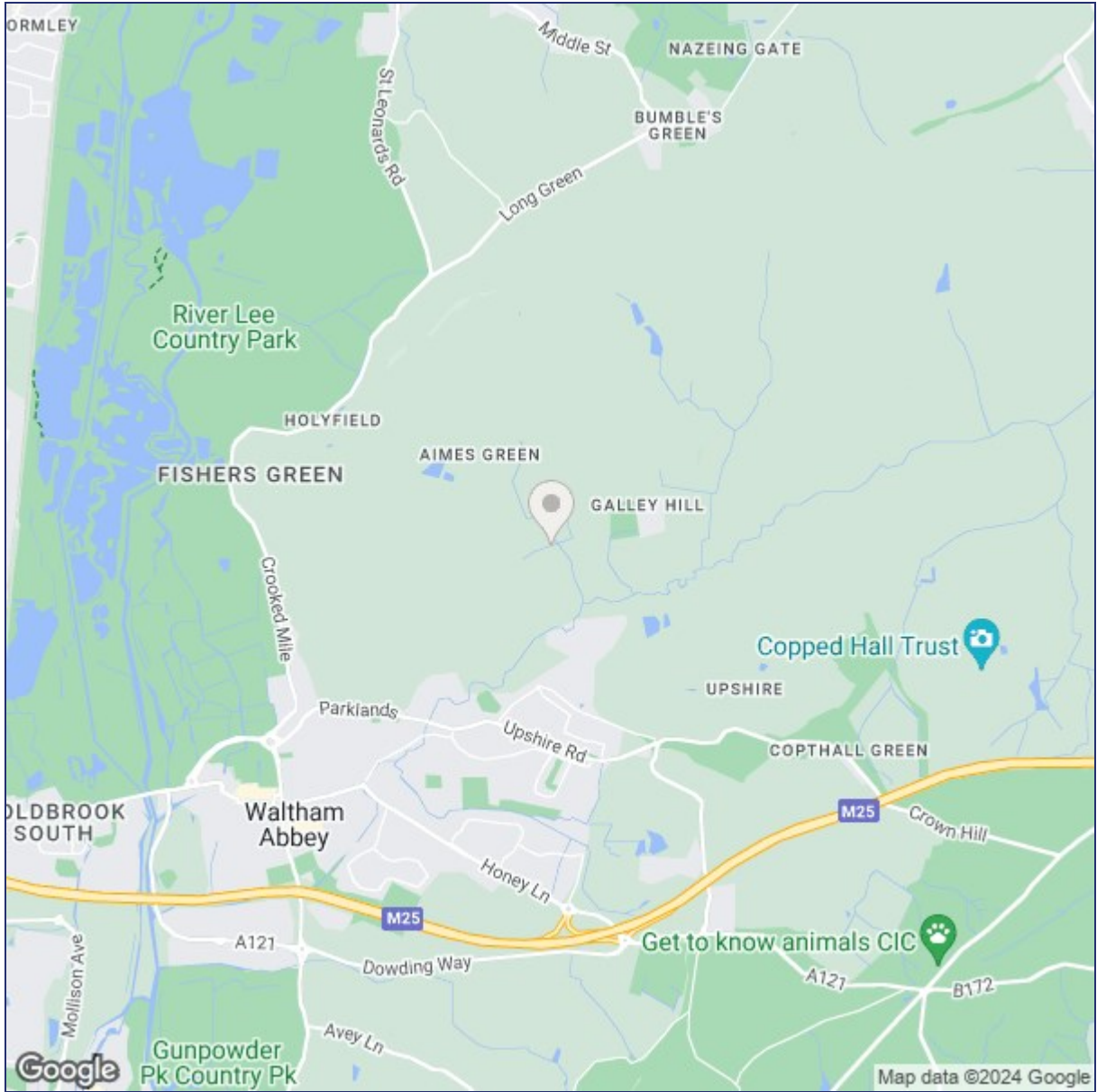


THIS FLOORPLAN IS PROVIDED WITHOUT WARRANTY OF ANY KIND. SENSOPIA DISCLAIMS ANY WARRANTY INCLUDING, WITHOUT LIMITATION, SATISFACTORY QUALITY OR ACCURACY OF DIMENSIONS.

8A Sun Street, Waltham Abbey, Essex, EN9 1EE

T: 01992 652006
www.kings-group.net





("These details are correct at time of going to press").

THE PROPERTY MISDESCRIPTIONS ACT 1991. The agent has not tested any apparatus, equipment, fixtures or services and so cannot verify that they are in working order, or fit for the purpose. References to the Tenure of a property are based on information supplied by the vendor. The agent has not had sight of the Title documents. A buyer is advised to obtain verification from their Solicitor or Surveyor.

