

TRADING PLACES ●

£269,950

Thirlmere Road, Partington, M31



2

Bedrooms



1

Bathroom

42 Flixton Road , Urmston, Manchester, M41 5AB |
mark@tradingplacesurmston.co.uk

01617470022

TRADING PLACES ●

£269,950

Thirlmere Road, Partington, M31



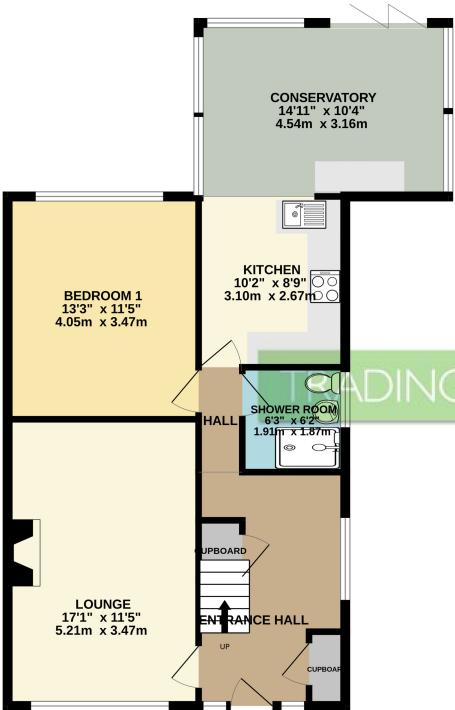
42 Flixton Road , Urmston, Manchester, M41 5AB |
mark@tradingplacesurmston.co.uk

01617470022

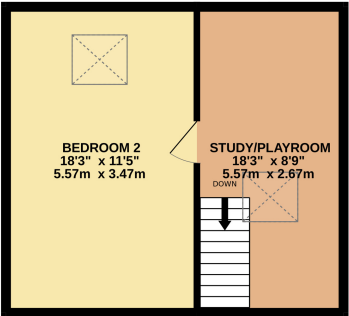


**** RENOVATED THROUGHOUT** - **NO ONWARD CHAIN** - **USEFUL LOFT CONVERSION**** - TRADING PLACES ESTATE AGENTS are pleased to offer for sale this simply stunning, meticulously renovated TWO DOUBLE BEDROOM semi detached bungalow position on arguably the most favoured road in Partington. In brief, the spacious accommodation comprises; a warm and welcoming reception hallway with a storage cupboard, a spacious 17ft living room and an impressive open plan kitchen/conservatory with bi-folding doors opening out into the landscaped rear garden. The kitchen itself benefits from a range of high gloss wall and base units with granite worksurfaces with integral appliances. Fully double glazed conservatory with underfloor heating. A recently fitted three piece shower room and a spacious double bedroom can also be found within this upgraded bungalow. Stairs rise from the hallway to a versatile loft conversion, where the second bedroom and a further room ideal for use as a large home office, study or a further reception room. Externally to the rear of the property, there is a landscaped garden being mainly laid to lawn with a patio area, garden pond and timber fenced boundaries. To the front of the property there is a pressed paved driveway providing off road parking. Offered for sale with no onward chain, an internal viewing of this immaculately presented bungalow comes highly recommended.

GROUND FLOOR
760 sq.ft. (70.6 sq.m.) approx.



1ST FLOOR
368 sq.ft. (34.2 sq.m.) approx.



TOTAL FLOOR AREA: 1128 sq.ft. (104.8 sq.m.) approx.

Whilst every attempt has been made to ensure the accuracy of the floorplan contained here, measurements of doors, windows, rooms and any other items are approximate and no responsibility is taken for any error, omission or mis-statement. This plan is for illustrative purposes only and should be used as such by any prospective purchaser. The services, systems and appliances shown have not been tested and no guarantee as to their operability or efficiency can be given.
Made with Metropix ©2024

