



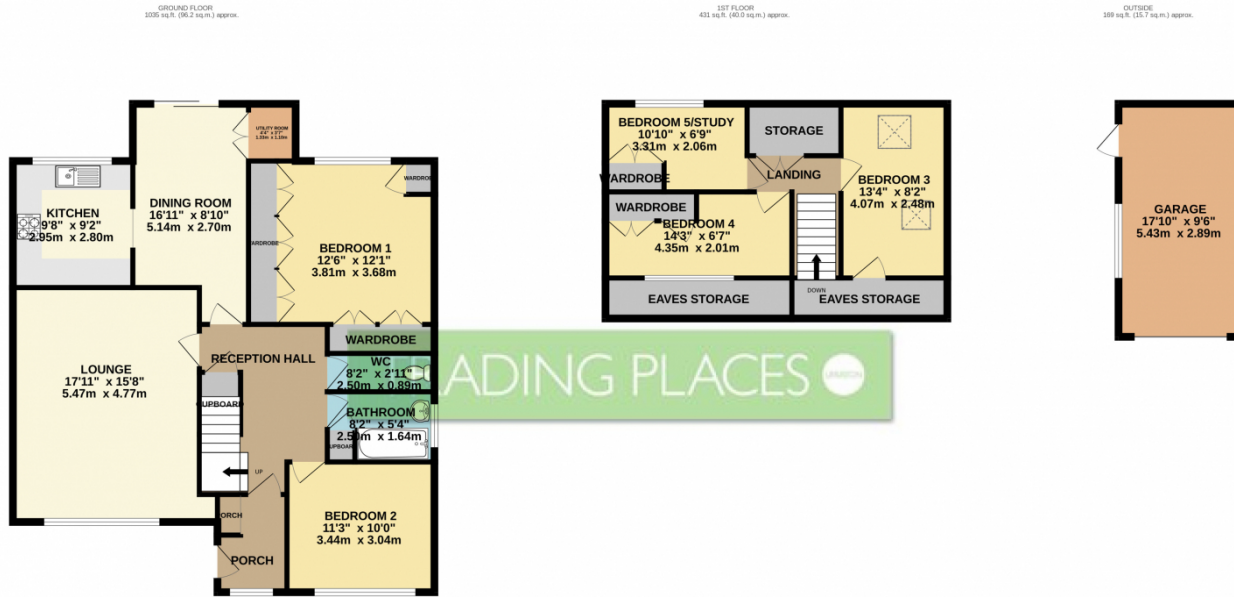
 4
Bedrooms

 1
Bathroom





TRADING PLACES ESTATE AGENTS are pleased to offer for sale this delightful 1635 SQFT FOUR/FIVE BEDROOM SEMI-DETACHED dormer bungalow situated in a highly sought after residential location of Marlborough Road in Flixton. Warmed by Gas central heating and benefiting from double glazing, this desirable extended property briefly comprises; entrance porch, a warm and welcoming reception hallway, two double bedrooms, an impressive 18 ft living room, a two piece bathroom with separate wc, extended dining room, separate kitchen. Stairs leading to the second floor provides two/three bedrooms. An detached garage provides space for a vehicle or additional storage with the supply power and lighting. Externally,lawned garden to the front of the property and a paved driveway provides off road parking. To the rear, a private, mainly lawned rear garden can be found with well stocked borders, fenced boundaries and ample space for a table and chairs during those summer months which has the benefit of OVERLOOKING THE LOCAL ALLOMENTS . We thoroughly recommend an internal inspection to appreciate this superb bungalow.



TOTAL FLOOR AREA : 1635 sq.ft. (151.9 sq.m.) approx.
 Whilst every attempt has been made to ensure the accuracy of the floorplan contained here, measurements of doors, windows, rooms and any other items are approximate and no responsibility is taken for any error, omission or mis-statement. This plan is for illustrative purposes only and should be used as such by any prospective purchaser. The services, systems and appliances shown have not been tested and no guarantee as to their operability or efficiency can be given.
 Made with Metropix ©2024

