



2

Bedrooms



1

Bathroom

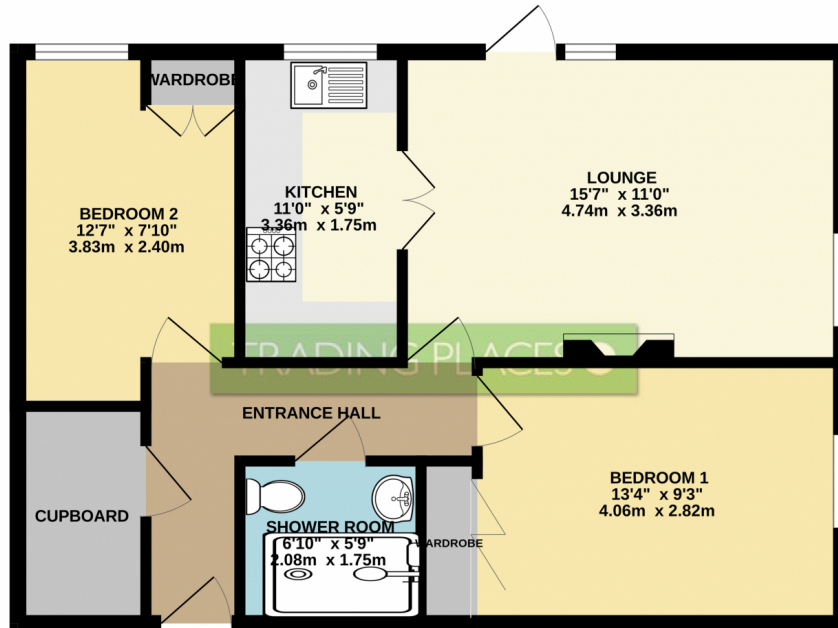




RETIREMENT HOME \* DIRECT ACCESS TO THE GARDENS. CHAIN FREE ! GROUND FLOOR, TWO DOUBLE BEDROOM purpose built retirement apartment set within a popular development off Brooklands Road and close to SALE TOWN CENTRE and the METROLINK. Situated on the ground floor means this property benefits from immediate access to the beautiful communal gardens.

Briefly comprising; communal entrance hall and social room. Within the apartment, two double bedrooms, large living room, kitchen and bathroom room - all fitted with pull cord alarm systems. Off the hallways there is a storage cupboard housing the Economy 7 boiler. Externally, well maintained gardens and residents parking. Within the development there is an on-site house manager.

GROUND FLOOR  
588 sq.ft. (54.6 sq.m.) approx.



TOTAL FLOOR AREA: 588 sq.ft. (54.6 sq.m.) approx.

Whilst every attempt has been made to ensure the accuracy of the floorplan contained here, measurements of doors, windows, rooms and any other items are approximate and no responsibility is taken for any error, omission or mis-statement. This plan is for illustrative purposes only and should be used as such by any prospective purchaser. The services, systems and appliances shown have not been tested and no guarantee as to their operability or efficiency can be given.  
Made with Metropix ©2024

