



## 35 Iford Bridge Home Park Old Bridge Road, Bournemouth

Bournemouth

Guide Price £270,000



## 35 Iford Bridge Home Park Old Bridge Road

Bournemouth, Bournemouth

Nestled within the serene surroundings of a tranquil residential park, this two-bedroom park home measuring 40 × 20 ft. The property provides a delightful living space for those seeking a peaceful retreat in a desirable location.

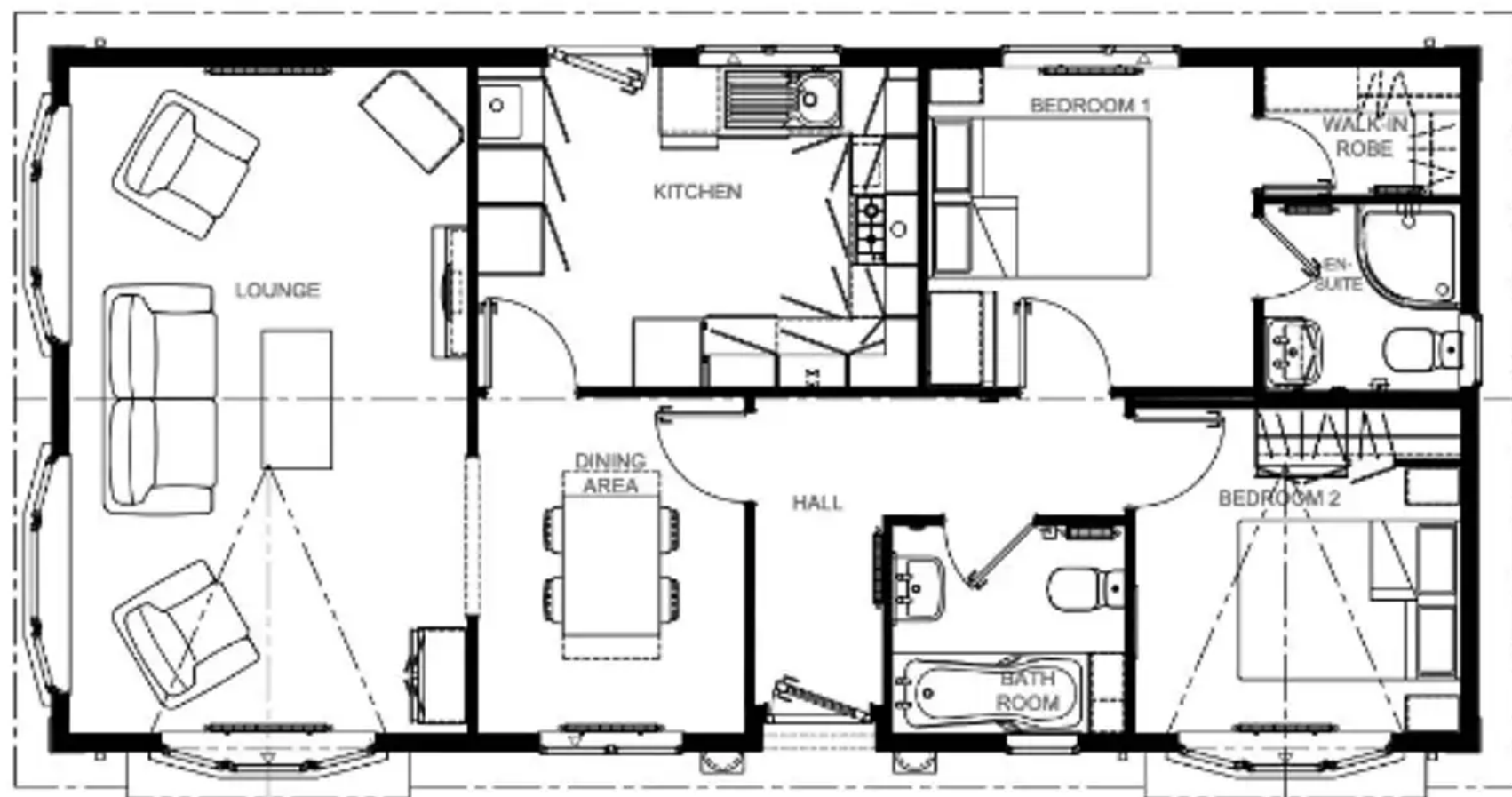
Upon entering, you are greeted by a spacious open-plan lounge diner, creating a warm and welcoming ambience that is perfect for relaxing or entertaining guests. The well-appointed fitted kitchen boasts modern amenities and ample storage space. Further benefits include two generously sized double bedrooms, and is further complemented by a modern bathroom.

One of the key highlights of this property is the private patio, offering an ideal spot for alfresco dining or simply enjoying the fresh air in the comfort of your own home. The park home also benefits from off-road parking, providing convenience and peace of mind for residents with vehicles.

Residents of this park home can enjoy the benefits of all-year-round use, allowing them to appreciate the beauty of every season from the comfort of their own home.

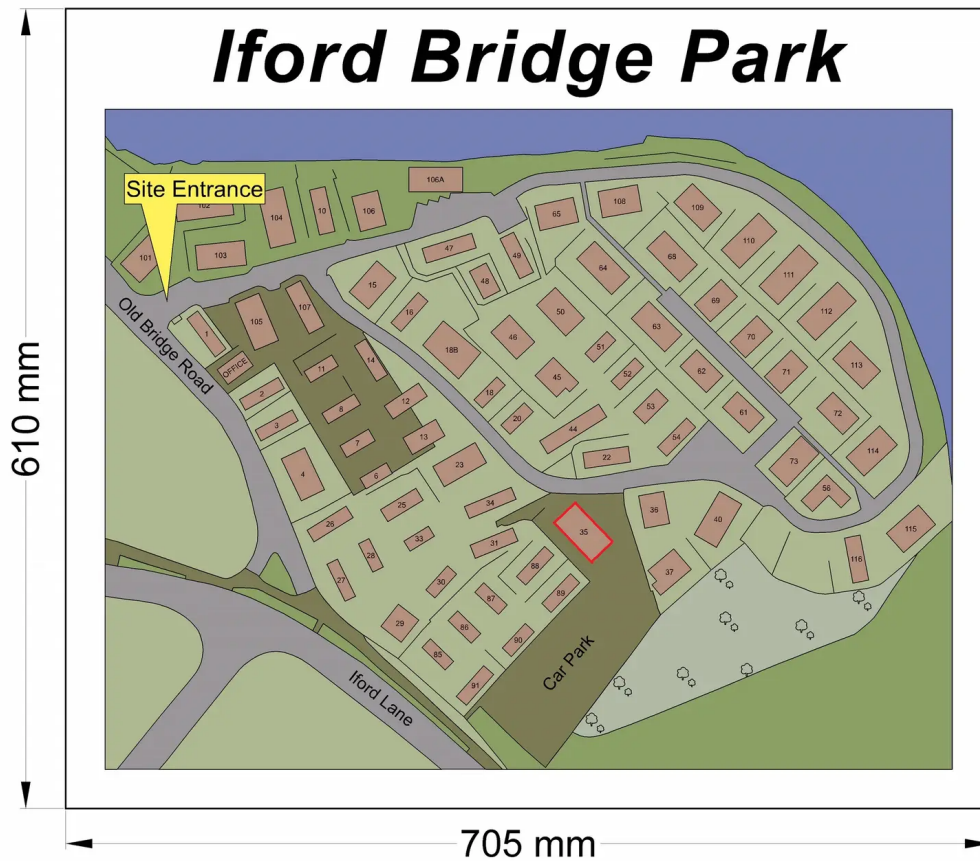
Additionally, the property allows for pets, making it an ideal choice for animal lovers.

The park home is subject to a pitch fee of £268 per calendar month, providing residents with access to the park's facilities and services.



*40' x 20' Omar Middleton*

1,255 x 721



## 35 Iford Bridge Home Park Old Bridge Road

Bournemouth, Bournemouth

Located on the highly desirable Iford Bridge Park this delightful park home is located a short walk from excellent bus links to both Bournemouth and Christchurch. Local Authority Bournemouth Borough Council. Council Tax Band A. Pitch Fee £268 Per Month  
Council Tax band: A

Tenure: Leasehold

EPC Energy Efficiency Rating:

EPC Environmental Impact Rating:

- Two double bedroom park home
- Measuring 40ft x 20ft
- Only 16 years old
- pitch fee - £268 per calendar month
- All year round use
- Pets allowed
- Private patio
- Open plan lounge diner
- Fitted kitchen
- Off road parking





## Jordan Marks estates

Jordan Marks Estates, 16 High Street - BH23 1AY

01202 484444 • [george@jordanmarksestates.co.uk](mailto:george@jordanmarksestates.co.uk) • <http://jordanmarksestates.co.uk>