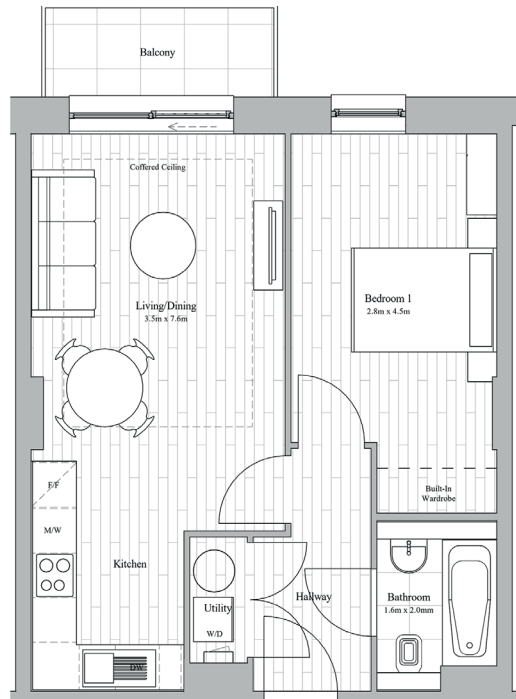


# SPRINGMOUNT MILL

STOCKPORT

1

## 1 Bedroom 1 Bathroom 46m<sup>2</sup>/495ft<sup>2</sup>

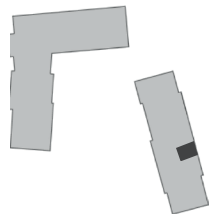


Nestled in the heart of residential Edgley, Springmount Mill is a stunning new development of 202 beautifully designed homes overlooking the River Mersey. Whether you're a professional or a growing family, these thoughtfully appointed apartments offer the perfect blend of comfort, convenience, and style.

Enjoy onsite parking with EV charging\*, landscaped communal spaces, and easy access to parks, shops, and local amenities-all just a 15-minute walk from Stockport train station and city centre.

A generous 1 bedroom apartment with built in wardrobes, full bathroom, open plan kitchen living space with built in appliances. East facing with balcony, with secluded views over playing fields and Stockport beyond .

## Apartment Type 1A-1B

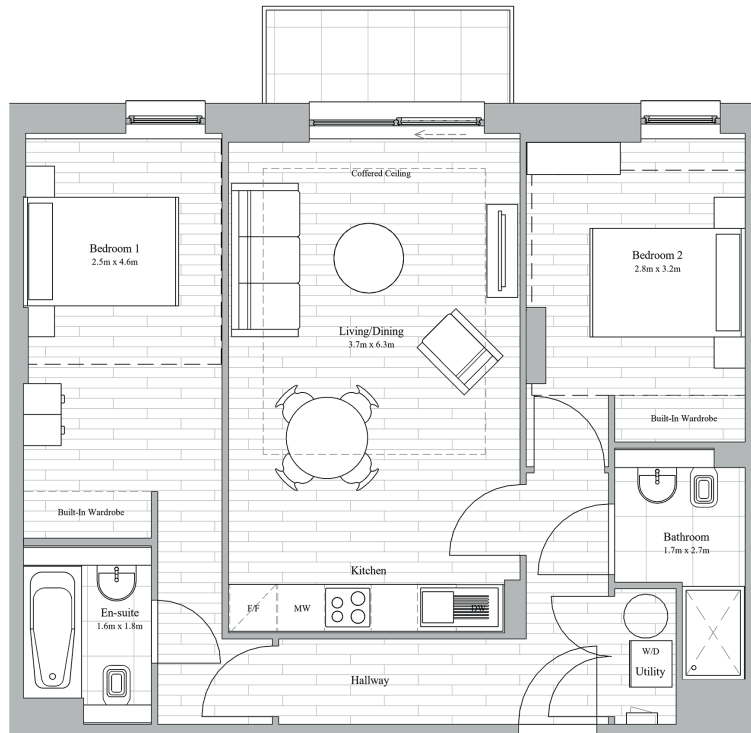


# SPRINGMOUNT MILL

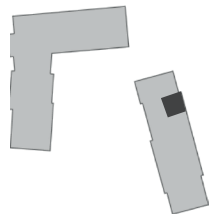
STOCKPORT

2

## 2 Bedroom 2 Bathroom 71m<sup>2</sup>/764ft<sup>2</sup>



## Apartment Type 2A-2B



Nestled in the heart of residential Edgley, Springmount Mill is a stunning new development of 202 beautifully designed homes overlooking the River Mersey. Whether you're a professional or a growing family, these thoughtfully appointed apartments offer the perfect blend of comfort, convenience, and style.

Enjoy onsite parking with EV charging\*, landscaped communal spaces, and easy access to parks, shops, and local amenities-all just a 15-minute walk from Stockport train station and city centre.

A generous 2 bedroom apartment with built in wardrobes, en-suite to bedroom 1 and a full bathroom. There is open plan kitchen living space with built in appliances. East facing with balcony, with secluded views over playing fields and Stockport beyond .

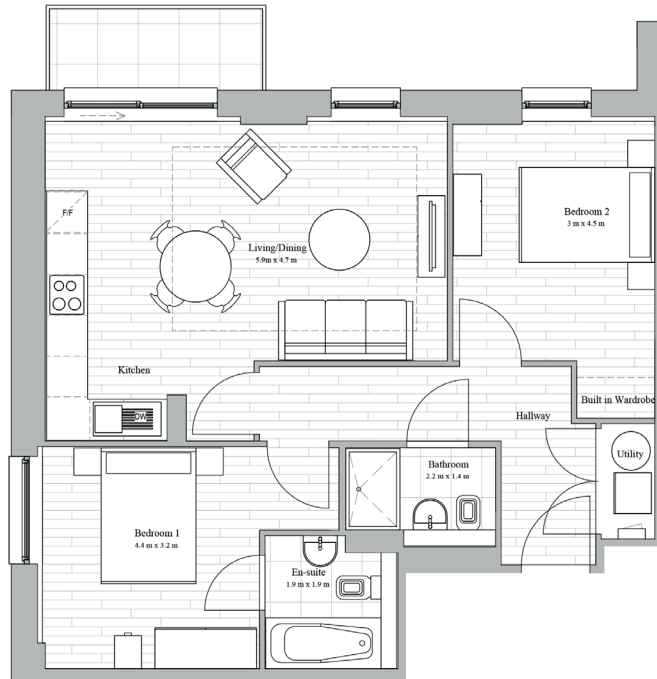


# SPRINGMOUNT MILL

STOCKPORT

3

## 2 Bedroom 2 Bathroom 68m<sup>2</sup>/731ft<sup>2</sup>

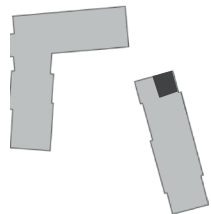


Nestled in the heart of residential Edgley, Springmount Mill is a stunning new development of 202 beautifully designed homes overlooking the River Mersey. Whether you're a professional or a growing family, these thoughtfully appointed apartments offer the perfect blend of comfort, convenience, and style.

Enjoy onsite parking with EV charging\*, landscaped communal spaces, and easy access to parks, shops, and local amenities-all just a 15-minute walk from Stockport train station and city centre.

A generous 2 bedroom apartment with built in wardrobes, en-suite bath to bedroom 1 and a Shower room . There is open plan kitchen living space with built in appliances. East facing with balcony, with secluded views over playing fields and Stockport beyond .

## Apartment Type 2C

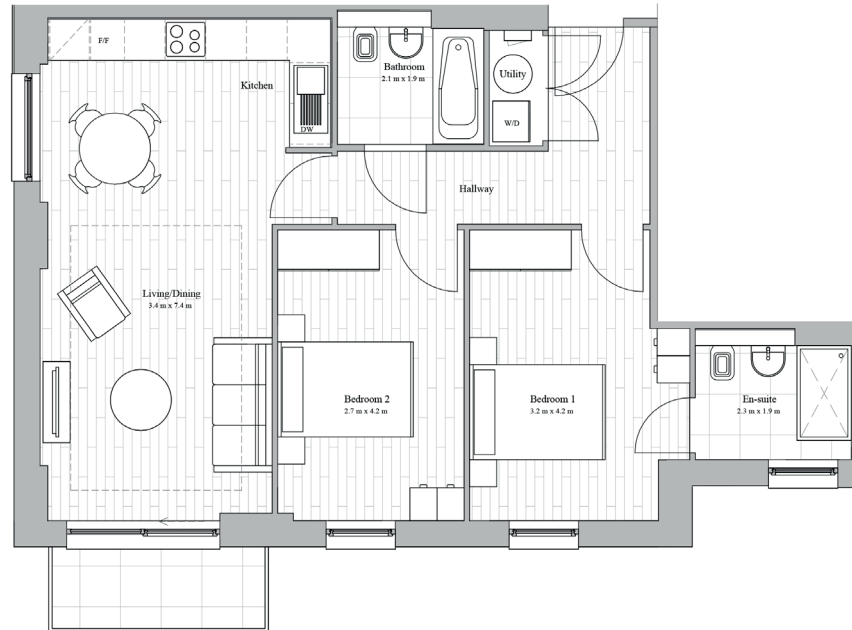


# SPRINGMOUNT MILL

STOCKPORT

4

2 Bedroom 2 Bathroom  
74m<sup>2</sup>/796ft<sup>2</sup>

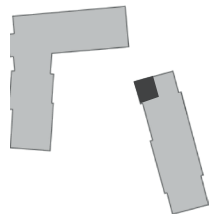


Nestled in the heart of residential Edgley, Springmount Mill is a stunning new development of 202 beautifully designed homes overlooking the River Mersey. Whether you're a professional or a growing family, these thoughtfully appointed apartments offer the perfect blend of comfort, convenience, and style.

Enjoy onsite parking with EV charging\*, landscaped communal spaces, and easy access to parks, shops, and local amenities-all just a 15-minute walk from Stockport train station and city centre.

A generous 2 bedroom apartment with built in wardrobes, ensuite to bedroom 1 and a full bathroom. There is open plan kitchen living space with built in appliances. West facing with balcony for afternoon light overlooking a central gardens.

Apartment Type 2D



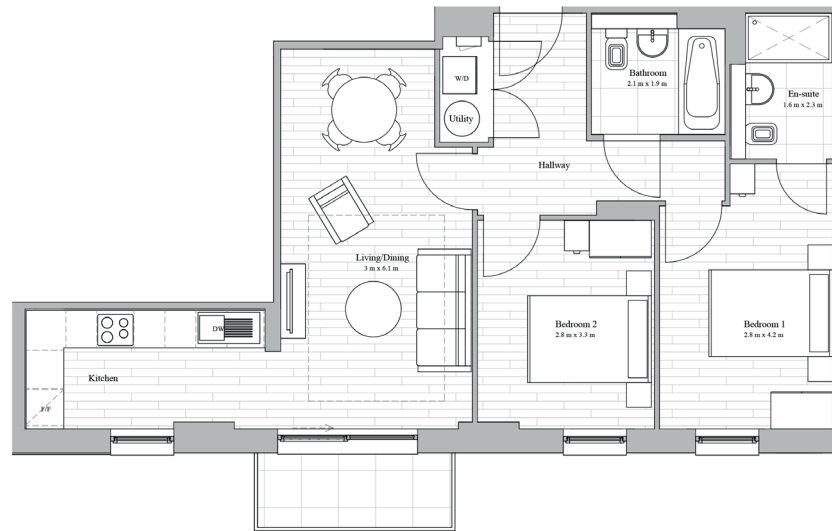


# SPRINGMOUNT MILL

STOCKPORT

5

2 Bedroom 2 Bathroom  
68m<sup>2</sup>/731ft<sup>2</sup>

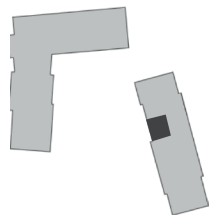


Nestled in the heart of residential Edgley, Springmount Mill is a stunning new development of 202 beautifully designed homes overlooking the River Mersey. Whether you're a professional or a growing family, these thoughtfully appointed apartments offer the perfect blend of comfort, convenience, and style.

Enjoy onsite parking with EV charging\*, landscaped communal spaces, and easy access to parks, shops, and local amenities-all just a 15-minute walk from Stockport train station and city centre.

A generous 2 bedroom apartment with built in wardrobes, ensuite to bedroom 1 and a full bathroom. There is open plan kitchen living space with built in appliances. West facing with balcony for afternoon light overlooking a central gardens.

Apartment Type 2E

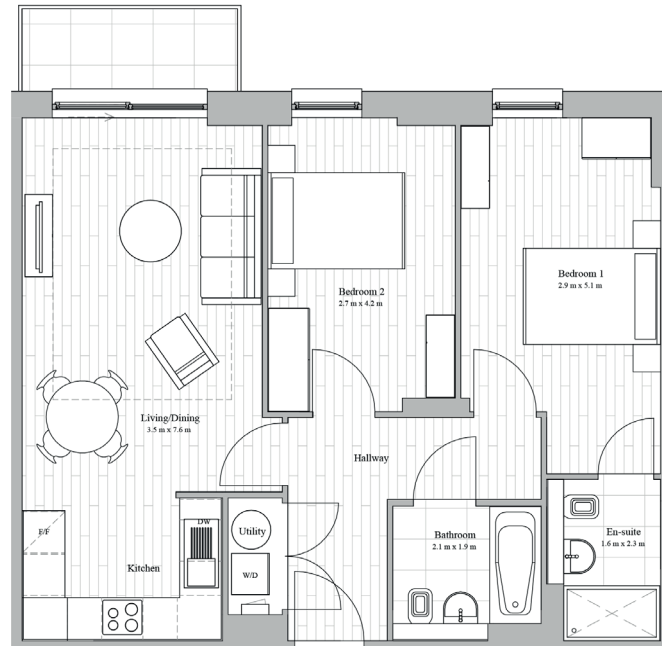


# SPRINGMOUNT MILL

STOCKPORT

6

## 2 Bedroom 2 Bathroom 71m<sup>2</sup>/764ft<sup>2</sup>

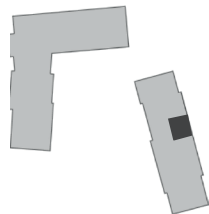


Nestled in the heart of residential Edgley, Springmount Mill is a stunning new development of 202 beautifully designed homes overlooking the River Mersey. Whether you're a professional or a growing family, these thoughtfully appointed apartments offer the perfect blend of comfort, convenience, and style.

Enjoy onsite parking with EV charging\*, landscaped communal spaces, and easy access to parks, shops, and local amenities-all just a 15-minute walk from Stockport train station and city centre.

A generous 2 bedroom apartment with built in wardrobes, ensuite to bedroom 1 and a full bathroom. There is open plan kitchen living space with built in appliances. East facing with balcony, with secluded views over playing fields and Stockport beyond.

## Apartment Type 2F

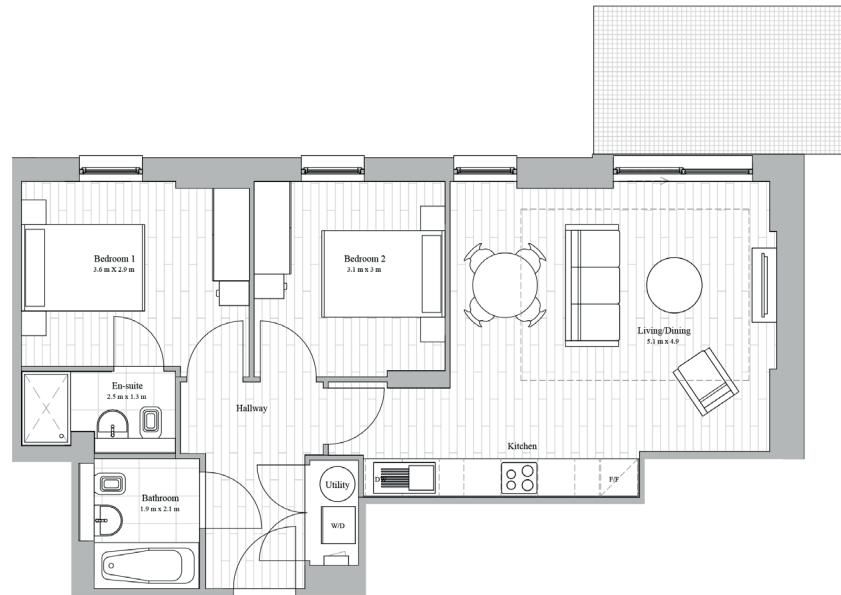


# SPRINGMOUNT MILL

STOCKPORT

7

## 2 Bedroom 2 Bathroom 67m<sup>2</sup>/721ft<sup>2</sup>

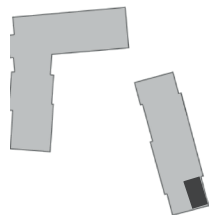


Nestled in the heart of residential Edgley, Springmount Mill is a stunning new development of 202 beautifully designed homes overlooking the River Mersey. Whether you're a professional or a growing family, these thoughtfully appointed apartments offer the perfect blend of comfort, convenience, and style.

Enjoy onsite parking with EV charging\*, landscaped communal spaces, and easy access to parks, shops, and local amenities-all just a 15-minute walk from Stockport train station and city centre.

A generous 2 bedroom apartment with built in wardrobes, ensuite to bedroom 1 and a full bathroom. There is open plan kitchen living space with built in appliances. East facing with secluded patio.

## Apartment Type 2G



# SPRINGMOUNT MILL

STOCKPORT

8

## 2 Bedroom 1 Bathroom 62m<sup>2</sup>/667ft<sup>2</sup>



Nestled in the heart of residential Edgley, Springmount Mill is a stunning new development of 202 beautifully designed homes overlooking the River Mersey. Whether you're a professional or a growing family, these thoughtfully appointed apartments offer the perfect blend of comfort, convenience, and style.

Enjoy onsite parking with EV charging\*, landscaped communal spaces, and easy access to parks, shops, and local amenities-all just a 15-minute walk from Stockport train station and city centre.

A generous 2 bedroom apartment with built in wardrobes, full bathroom. There is open plan kitchen living space with built in appliances. West facing with balcony for afternoon light overlooking a central gardens.

## Apartment Type 2H

