

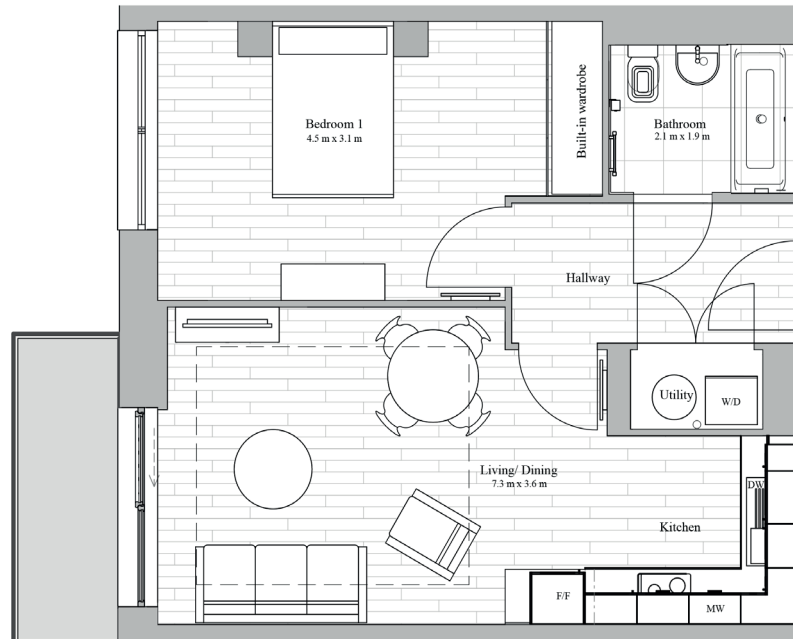
# BRINKSWAY MILL

STOCKPORT

1

## 1 Bedroom 1 Bathroom

50m<sup>2</sup>/538ft<sup>2</sup>

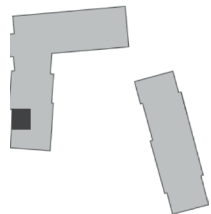


Stockport town centre is undergoing an ambitious regeneration. There is a thriving scene of independent bars, eateries and markets, with excellent rail links to Manchester.

Set on a hillside over the Mersey Ship Canal, with views out over Stockport, Springmount Mill offers luxury new accommodation, onsite parking and landscaped grounds within a 15 minute walk of Stockport train station and local parks.

A generous 1 bedroom apartment with built in wardrobes, full bathroom, open plan kitchen living space with built in appliances. A secluded West facing balcony for afternoon light.

## Apartment Type 1A



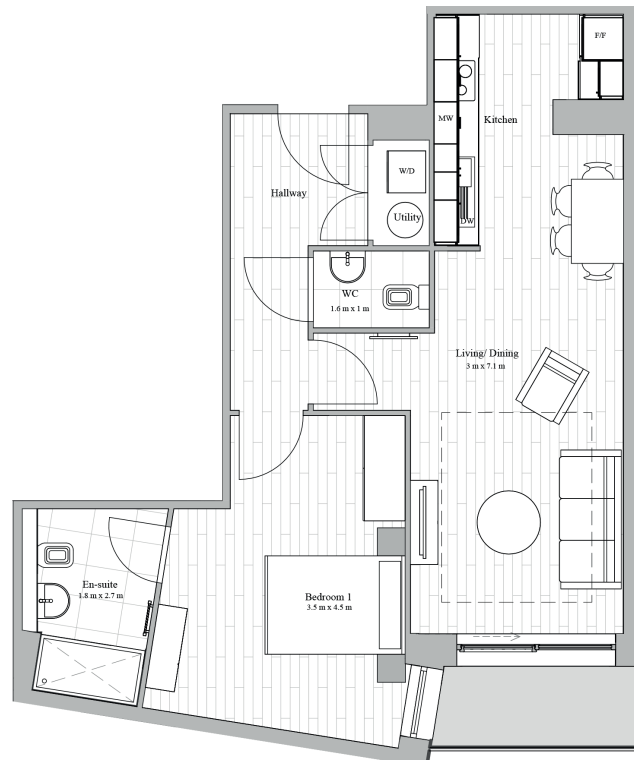
# BRINKSWAY MILL

STOCKPORT

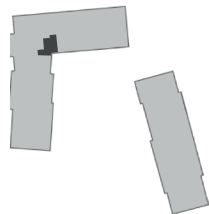
2

## 1 Bedroom 1.5 Bathroom

57m2/613ft2



## Apartment Type 1C



Stockport town centre is undergoing an ambitious regeneration. There is a thriving scene of independent bars, eateries and markets, with excellent rail links to Manchester.

Set on a hillside over the Mersey Ship Canal, with views out over Stockport, Springmount Mill offers luxury new accommodation, onsite parking and landscaped grounds within a 15 minute walk of Stockport train station and local parks.

A generous 1 bedroom apartment with built in wardrobes, ensuite and half bathroom, open plan kitchen living space with built in appliances. South facing with balcony for afternoon light overlooking a central gardens.

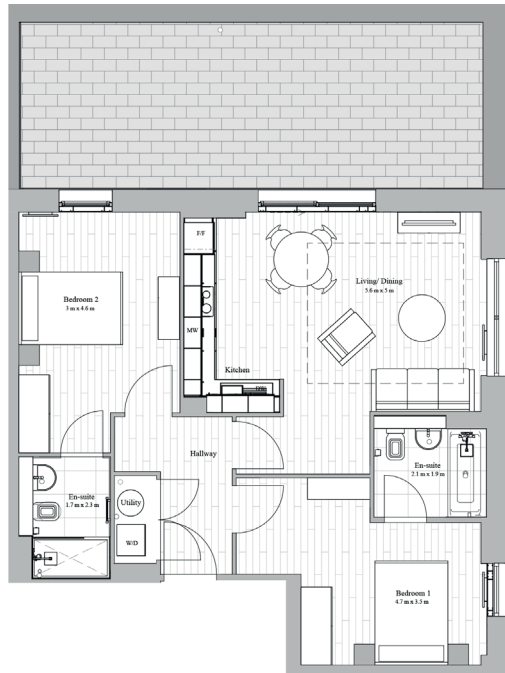


# BRINKSWAY MILL

STOCKPORT

3

2 Bedroom 2 Bathroom  
69m<sup>2</sup>/742ft<sup>2</sup>

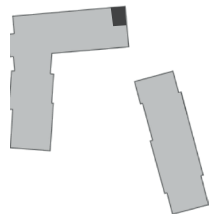


Stockport town centre is undergoing an ambitious regeneration. There is a thriving scene of independent bars, eateries and markets, with excellent rail links to Manchester.

Set on a hillside over the Mersey Ship Canal, with views out over Stockport, Springmount Mill offers luxury new accommodation, onsite parking and landscaped grounds within a 15 minute walk of Stockport train station and local parks.

A generous 2 bedroom apartment with built in wardrobes, full bathroom and en-suite to bedroom 1. There is open plan kitchen living space with built in appliances. There is a north facing terrace with views over Stockport and River Mersey.

Apartment Type 2B

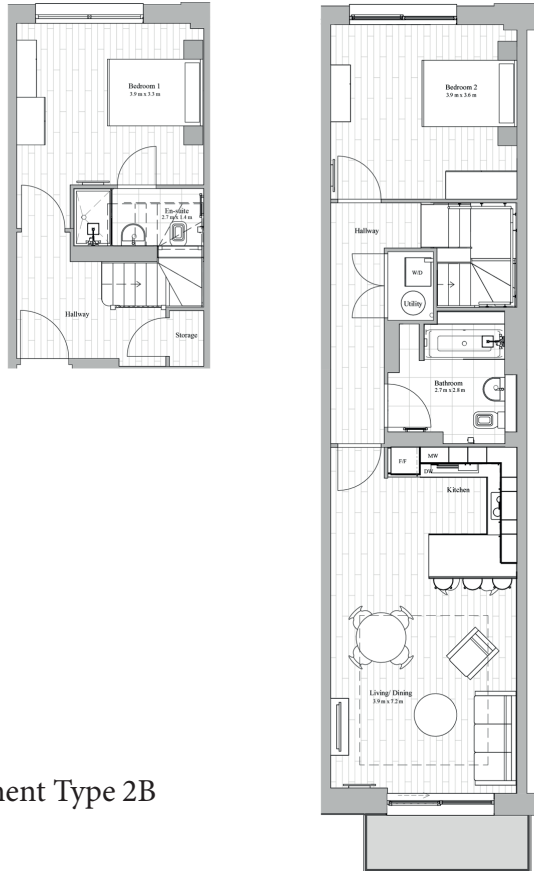


# BRINKSWAY MILL

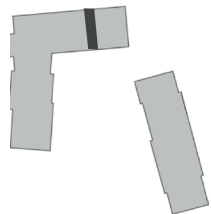
STOCKPORT

4

2 Bedroom 2 Bathroom duplex  
88m<sup>2</sup>/947ft<sup>2</sup>



Apartment Type 2B



Stockport town centre is undergoing an ambitious regeneration. There is a thriving scene of independent bars, eateries and markets, with excellent rail links to Manchester.

Set on a hillside over the Mersey Ship Canal, with views out over Stockport, Springmount Mill offers luxury new accommodation, onsite parking and landscaped grounds within a 15 minute walk of Stockport train station and local parks.

A generous 2 bedroom Duplex apartment with built in wardrobes, ensuite to bedroom 1 and a full bathroom. There is open plan kitchen living space with built in appliances. A dual aspect apartment with Northerly views over Stockport and South facing with balcony for afternoon light, overlooking a central gardens.





# BRINKSWAY MILL

STOCKPORT

5

## 2 Bedroom 2 Bathroom

72m<sup>2</sup>/775ft<sup>2</sup>

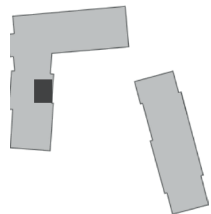


Stockport town centre is undergoing an ambitious regeneration. There is a thriving scene of independent bars, eateries and markets, with excellent rail links to Manchester.

Set on a hillside over the Mersey Ship Canal, with views out over Stockport, Springmount Mill offers luxury new accommodation, onsite parking and landscaped grounds within a 15 minute walk of Stockport train station and local parks.

A generous 2 bedroom apartment with built in wardrobes, ensuite to bedroom 1 and a full bathroom. There is open plan kitchen living space with built in appliances. East facing balcony overlooking a central gardens.

## Apartment Type 2C



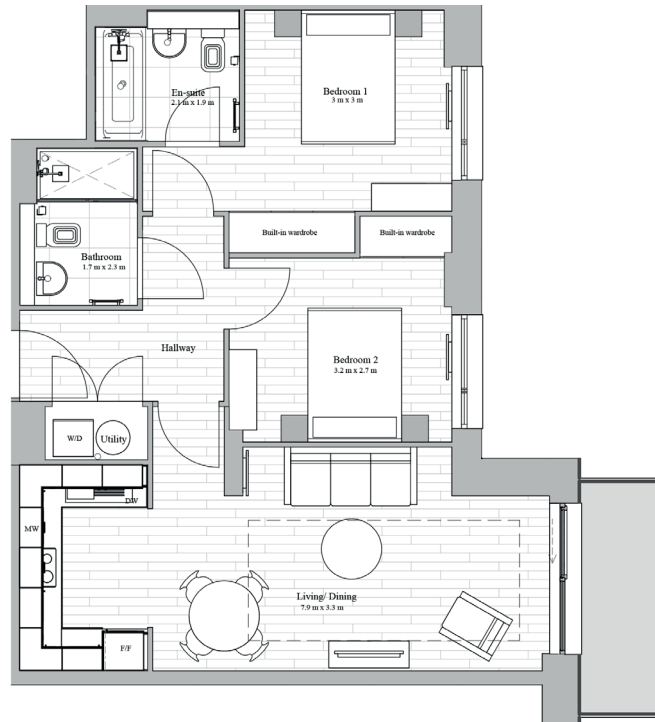
# BRINKSWAY MILL

STOCKPORT

6

## 2 Bedroom 2 Bathroom

65m<sup>2</sup>/699ft<sup>2</sup>

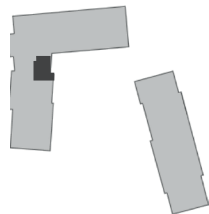


Stockport town centre is undergoing an ambitious regeneration. There is a thriving scene of independent bars, eateries and markets, with excellent rail links to Manchester.

Set on a hillside over the Mersey Ship Canal, with views out over Stockport, Springmount Mill offers luxury new accommodation, onsite parking and landscaped grounds within a 15 minute walk of Stockport train station and local parks.

A generous 2 bedroom apartment with built in wardrobes, ensuite to bedroom 1 and a full bathroom. There is open plan kitchen living space with built in appliances. East facing balcony overlooking a central gardens.

## Apartment Type 2D

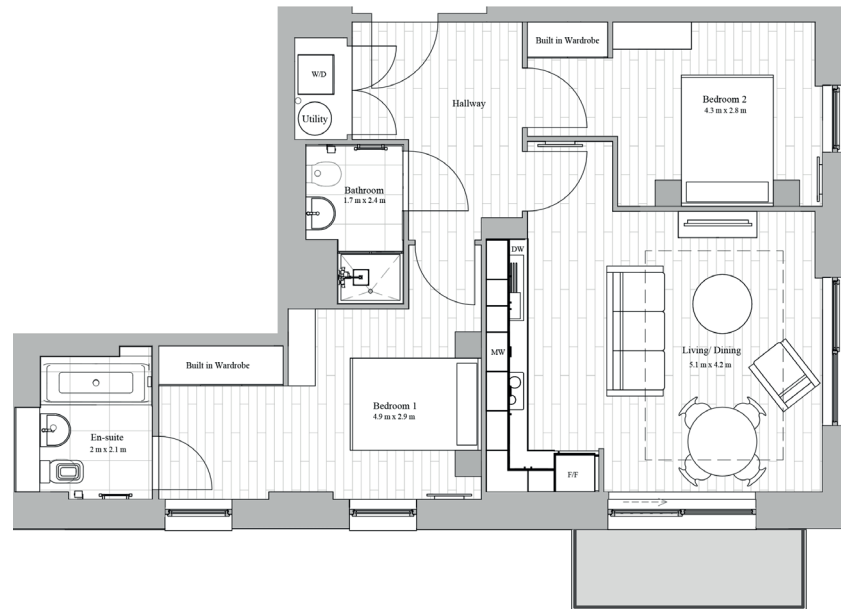


# BRINKSWAY MILL

STOCKPORT

7

## 2 Bedroom 2 Bathroom 68m<sup>2</sup>/731ft<sup>2</sup>

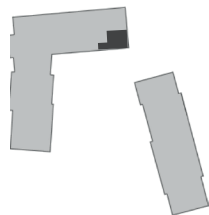


Stockport town centre is undergoing an ambitious regeneration. There is a thriving scene of independent bars, eateries and markets, with excellent rail links to Manchester.

Set on a hillside over the Mersey Ship Canal, with views out over Stockport, Springmount Mill offers luxury new accommodation, onsite parking and landscaped grounds within a 15 minute walk of Stockport train station and local parks.

A generous 2 bedroom apartment with built in wardrobes, ensuite to bedroom 1 and a full bathroom. There is open plan kitchen living space with built in appliances. A dual aspect apartment with East and South facing with balcony for afternoon light, overlooking a central gardens.

## Apartment Type 2G

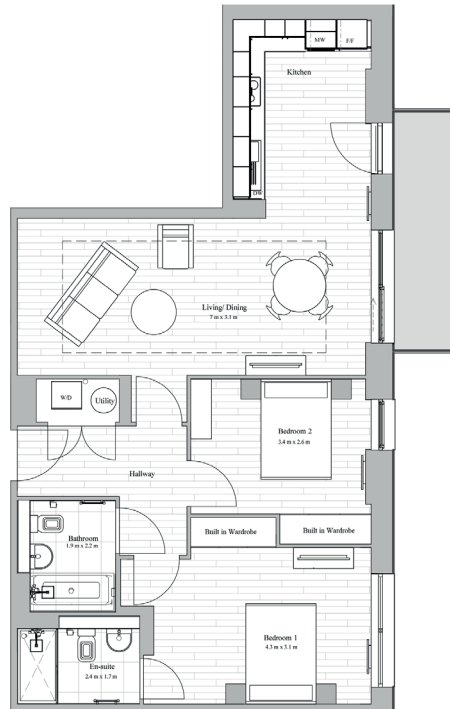


# BRINKSWAY MILL

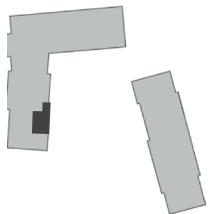
STOCKPORT

8

2 Bedroom 2 Bathroom  
79m<sup>2</sup>/850ft<sup>2</sup>



Apartment Type 2H



Stockport town centre is undergoing an ambitious regeneration. There is a thriving scene of independent bars, eateries and markets, with excellent rail links to Manchester.

Set on a hillside over the Mersey Ship Canal, with views out over Stockport, Springmount Mill offers luxury new accommodation, onsite parking and landscaped grounds within a 15 minute walk of Stockport train station and local parks.

A generous 2 bedroom apartment with built in wardrobes, ensuite to bedroom 1 and a full bathroom. There is open plan kitchen living space with built in appliances. A large East facing balcony overlooking a central gardens.



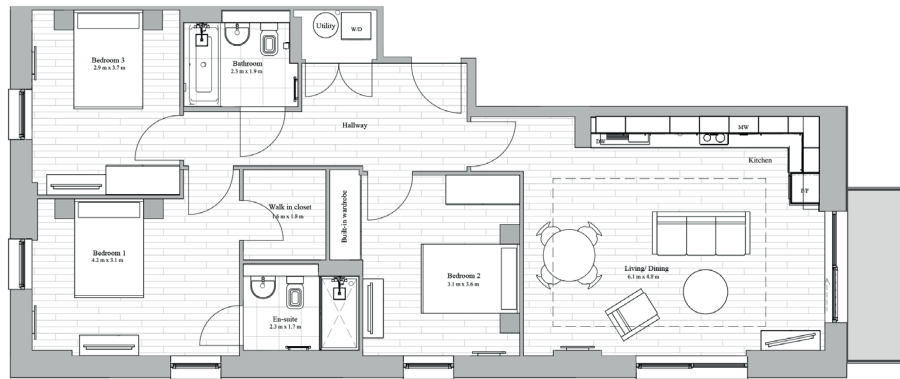


# BRINKSWAY MILL

STOCKPORT

9

3 Bedroom 2 Bathroom  
96m<sup>2</sup>/1033ft<sup>2</sup>

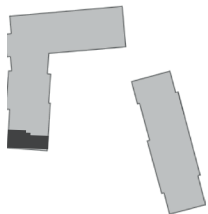


Stockport town centre is undergoing an ambitious regeneration. There is a thriving scene of independent bars, eateries and markets, with excellent rail links to Manchester.

Set on a hillside over the Mersey Ship Canal, with views out over Stockport, Springmount Mill offers luxury new accommodation, onsite parking and landscaped grounds within a 15 minute walk of Stockport train station and local parks.

A generous 3 bedroom apartment with built in wardrobes, en-suite and dressing room to bedroom 1 and a full bathroom. There is open plan kitchen living space with built in appliances. The apartment has Westly and Southern aspects, with an East facing balcony overlooking a central gardens.

Apartment Type 3A

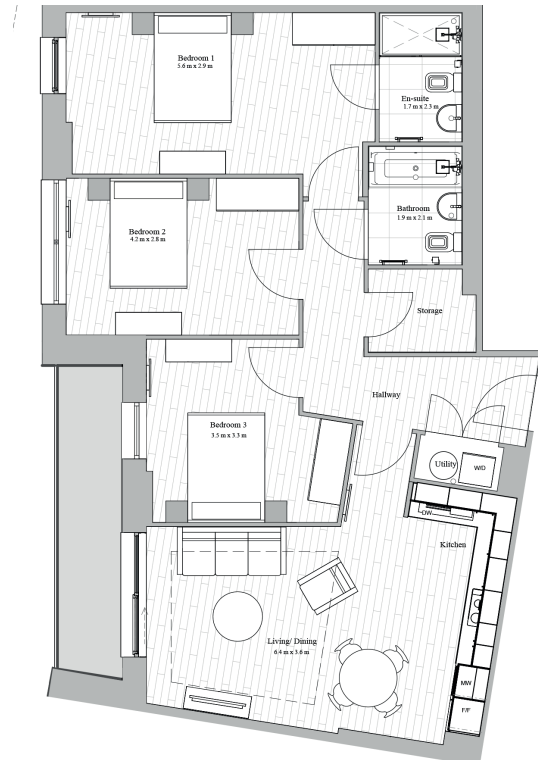


# BRINKSWAY MILL

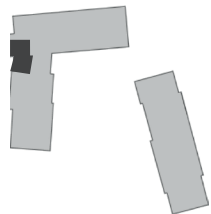
STOCKPORT

10

## 3 Bedroom 2 Bathroom 91m<sup>2</sup>/979ft<sup>2</sup>



## Apartment Type 3B



Stockport town centre is undergoing an ambitious regeneration. There is a thriving scene of independent bars, eateries and markets, with excellent rail links to Manchester.

Set on a hillside over the Mersey Ship Canal, with views out over Stockport, Springmount Mill offers luxury new accommodation, onsite parking and landscaped grounds within a 15 minute walk of Stockport train station and local parks.

A generous 3 bedroom apartment with built in wardrobes, ensuite to bedroom 1 and a full bathroom. There is open plan kitchen living space with built in appliances. The apartment is West facing with sheltered balcony.

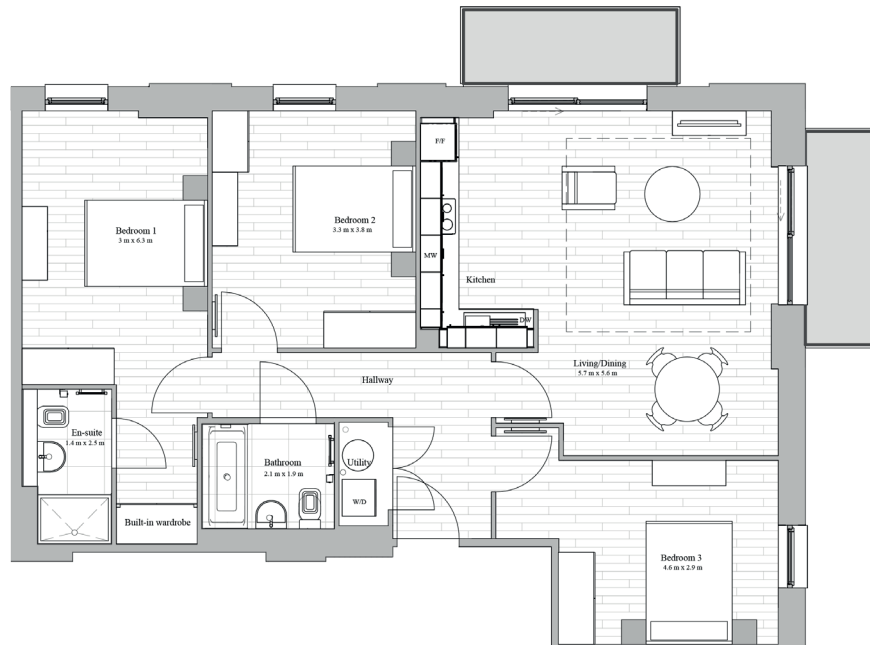


# BRINKSWAY MILL

STOCKPORT

11

3 Bedroom 2 Bathroom  
92m<sup>2</sup>/990ft<sup>2</sup>

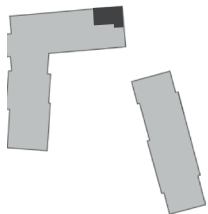


Stockport town centre is undergoing an ambitious regeneration. There is a thriving scene of independent bars, eateries and markets, with excellent rail links to Manchester.

Set on a hillside over the Mersey Ship Canal, with views out over Stockport, Springmount Mill offers luxury new accommodation, onsite parking and landscaped grounds within a 15 minute walk of Stockport train station and local parks.

A generous 3 bedroom apartment with built in wardrobes, full bathroom and en-suite to bedroom 1. There is open plan kitchen living space with built in appliances. There are North and East facing balconies with views over Stockport and River Mersey.

Apartment Type 3C

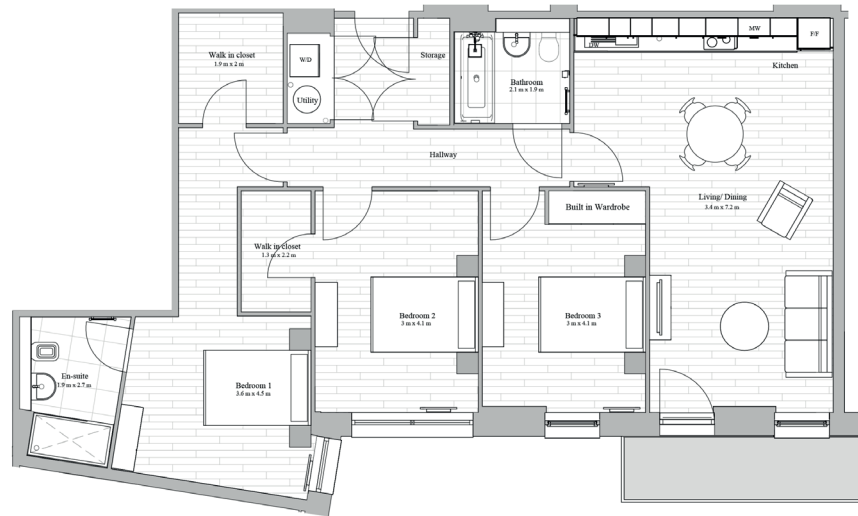


# BRINKSWAY MILL

STOCKPORT

12

## 3 Bedroom 2 Bathroom 102m<sup>2</sup>/1097ft<sup>2</sup>



Stockport town centre is undergoing an ambitious regeneration. There is a thriving scene of independent bars, eateries and markets, with excellent rail links to Manchester.

Set on a hillside over the Mersey Ship Canal, with views out over Stockport, Springmount Mill offers luxury new accommodation, onsite parking and landscaped grounds within a 15 minute walk of Stockport train station and local parks.

A generous 3 bedroom apartment with built in wardrobes, full bathroom and en-suite to bedroom 1. There is open plan kitchen living space with built in appliances. The apartment faces south and east with balcony and views over looking central gardens.

## Apartment Type 3D

