



Chiltern Court, 188 Baker Street, London, NW1 5SD

Economical Fitted Office To Let
1,990 sq ft (185 sq m)

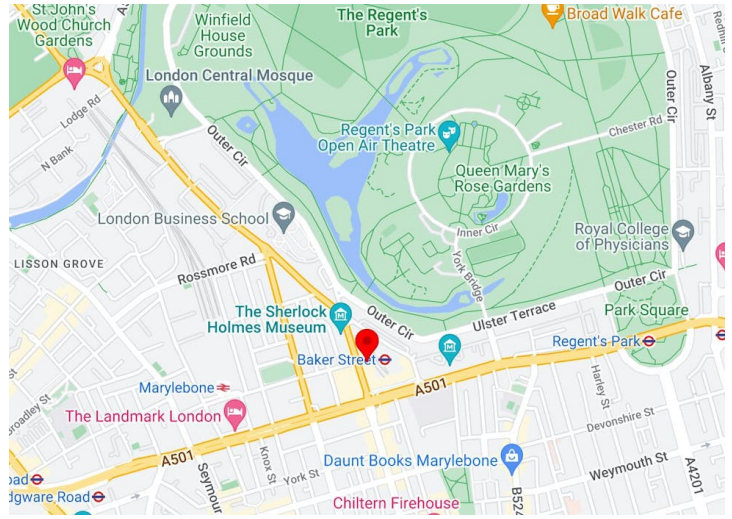
- Fitted out
- Manned reception
- Passenger lift
- High ceilings
- Comfort cooling
- Demised WC's

Chiltern Court

188 Baker Street, London, NW1 5SD

CROSSLAND
OTTER HUNT

Alexander
Reece
Thomson
CHARTERED SURVEYORS



Summary

Available Size	1,990 sq ft / 184.88 sq m
EPC	Upon enquiry

Description

The fitted and cooled lower ground floor office is accessed by way of a manned reception & passenger lift.

The office itself benefits from good natural light and excellent floor to ceiling heights. It is fitted to provide a meeting room, 2x offices, a kitchen and demised WC's.

Location

The building is located next to Baker Street London Underground station, boasting fabulous transport connections and the amenities of Baker Street itself.

Accommodation

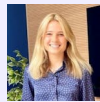
The accommodation comprises the following areas:

Name	sq ft	sq m	Rent (sq ft)	Rates Payable (sq ft)	Service Charge (sq ft)	Total month	Availability
Lower Ground	1,990	184.88	£39.50	£13.16	£7.23	£9,931.76	Available
Total	1,990	184.88	£39.50	£13.16	£7.23	£9,931.76	



Phil Frenay

02073992742 | 07818566174
phil@coh.eu



Charlotte Steele

020 7408 1114 | 07503625481
charlotte@coh.eu



Sebastian Norman (Alexander Reece Thomson)

020 7034 3395 | 07970 273 545
sebnorman@artsurveyors.co.uk