



**150 East Reach, Taunton, Somerset, TA1 3HT**

**Auction Guide Price +++ £55,000**

Hollis Morgan – OCTOBER LIVE ONLINE AUCTION – A Freehold MIXED USE PROPERTY ( 2715 Sq Ft )  
now in need of MODERNISATION with DEVELOPMENT POTENTIAL stc on a 0.14 ACRE SITE.



## 150 East Reach, Taunton, Somerset, TA1 3HT

### FOR SALE BY LIVE ONLINE AUCTION

ADDRESS | 150 East Reach, Taunton, Somerset TA1 3HT

Lot Number TBC

\*\*\* PLEASE NOTE NEW AUCTION START TIME - NOW 12:00  
\*\*\*

The Live Online Auction is on Wednesday 15th October 2025  
@ 12:00 Noon  
Registration Deadline is on Friday 10th October 2025 @ 16:00

The Auction will be streamed LIVE ONLINE via the Hollis Morgan website & you can chose to bid by telephone, proxy or via your computer.

Registration is a simple online process – please visit the Hollis Morgan auction website and click “REGISTER TO BID”

### THE PROPERTY

A Freehold mid terraced mixed use property occupying a 0.14 Acre plot with garden. The accommodation ( 2715 Sq Ft ) is arranged over two floors with an open plan retail unit and some residential accommodation plus a bathroom and bedroom on the first floor and various outbuildings and garden to rear. Sold with vacant possession.

Tenure - Freehold

Council Tax - A

Commercial Rateable Value - £7,400 pa

EPC - D (Commercial)

### THE OPPORTUNITY

#### MIXED USE FOR MODERNISATION

The property now requires complete modernisation with huge scope for a range of commercial and residential developments. The vendors have prepared some preliminary proposals for development but we understand no planning has been sought. Interested parties to make their own investigations - all subject to gaining the necessary consents.

#### PLANNING AND FURTHER INFORMATION

We understand the commercial areas have been occupied as a shop and as such are within Class E of the current Use Classes Order, the revised provisions of which came into force on 1st September 2020. As such the property has ‘Commercial Business and Service’ Use to include retail, financial and professional services, cafes and restaurants, offices, research and development, clinics, health centres and nurseries. The residential areas fall under use class C3 (Dwelling houses).

### LOCATION

The property is located along East Reach Road, a busy thoroughfare serving the town for pedestrians and motorists alike. The premise occupies a prominent trading position surrounded by other retailers close to Taunton's town centre. Taunton is the county town of Somerset with a population of approximately 75,000 people, a strong office based economy and a busy town centre, boasting numerous retailers and leisure occupiers, with significant developments to improve the town currently taking place. Taunton provides an extensive range of facilities and also has access to the M5 motorway, there is a main line city rail link which is easily accessible,

London Paddington being about 2 hours. The property is also well placed for easy access to the Brewhouse, Somerset County Cricket Ground and St. Marys Church.

### SOLICITORS & COMPLETION

Sayed Abedin

Lextel solicitors

Sabedin@lxtelsolicitors.co.uk

07568138834

#### EXTENDED COMPLETION

Completion is set for 8 weeks or earlier subject to mutual consent.

### IMPORTANT AUCTION INFORMATION

#### VIEWINGS

Please note the property is dangerous and anyone entering the property does so at their own risk.

Please submit a viewing request online and we will contact you to organise an appointment.

We will send you an email and text to confirm the appointment time and the full property address.

Viewings are supervised by a member of the Hollis Morgan Auction team who will meet you at the property.

#### MATERIAL INFORMATION

Information including utilities, Electricity supply, Water supply, Sewerage, Heating, Broadband, Mobile signal / coverage, Parking, Building safety, Restrictions and rights, Rights and easements, Flood risk, Erosion risk, Coastal erosion risk, Planning permission for proposal for development, Property accessibility / adaptations, Coalfield or mining area all of which will be supplied within the legal pack that can be accessed for free via the Hollis Morgan website or via your EIG account.

#### ONLINE LEGAL PACKS

Digital Copies of the Online legal pack can be downloaded Free of Charge.

Please visit the Hollis Morgan Website and select the chosen lot from our Current Auction List.

Press the GREEN button to "Download Legal Packs" For the first visit you will be required to register simply with your email and a password.

Having set up your account you can download legal packs or if they are not yet available, they will automatically be sent to you when we receive them.

You will be automatically updated by email if any new information is added.

There will be a note added to the list to confirm AUCTION PACK NOW COMPLETE when no further information is due to be added.

\*\*\* STAY UPDATED \*\*\* By registering for the legal pack we can ensure you are kept updated on any changes to this Lot in the build up to the sale.

#### BUYER'S PREMIUM

Please be aware all purchasers are subject to a £1,500 + VAT (£1,800 inc VAT) buyer's premium which is ALWAYS payable upon exchange of contracts whether the sale is concluded

before, during or after the auction date.

### GUIDE PRICE

An indication of the seller's current minimum acceptable price at auction. The guide price or range of guide prices is given to assist consumers in deciding whether to pursue a purchase. It is usual, but not always the case, that a provisional reserve range is agreed between the seller and the auctioneer at the start of marketing. As the reserve is not fixed at this stage and can be adjusted by the seller at any time up to the day of the auction in the light of interest shown during the marketing period, a guide price is issued. This guide price can be shown in the form of a minimum and maximum price range within which an acceptable sale price (reserve) would fall, or as a single price figure within 10% of which the minimum acceptable price (reserve) would fall. A guide price is different to a reserve price (see separate definition). Both the guide price and the reserve price can be subject to change up to and including the day of the auction.

### RESERVE PRICE

The seller's minimum acceptable price at auction and the figure below which the auctioneer cannot sell. The reserve price is not disclosed and remains confidential between the seller and the auctioneer. Both the guide price and the reserve price can be subject to change up to and including the day of the auction.

### PRE AUCTION OFFERS

Some vendors are willing to consider offers prior to the auction. Pre auction offers can **ONLY** be submitted by completing the online **PRE AUCTION OFFER FORM**

The form can be found on the Hollis Morgan website on the individual auction property listing.

Please note offers will not be considered until you have inspected the **COMPLETE LEGAL PACK** once it has been released.

There will be a note added to the list to confirm **AUCTION PACK NOW COMPLETE** when our client's solicitor informs us no further information is due to be added.

In the event of an offer being accepted the property will only be removed from the online auction and viewings stopped once contracts have successfully **EXCHANGED** subject to the standard auction terms and payment of the buyer's premium (£1,800 Inclusive of VAT) to Hollis Morgan.

Contracts can be exchanged via the solicitors or at the Hollis Morgan offices by appointment only.

### REGISTRATION PROCESS

The registration process is extremely simple – visit the Hollis Morgan auction website and click on the "Register to Bid" button.

The "Register to Bid" button can be found on the auction home page or on the individual lot listings.

Please note this function is not available on Rightmove or Zoopla.

Stage 1 – Complete the Online Bidding Form

Stage 2 – Upload your certified ID

Stage 3 – Invitation to bid

Stage 4 – Pay your security deposit (£6,800)

You are now ready to bid – Good luck!

If your bid is successful, the balance of the deposit monies must be transferred to our client account within 24 hours of the auction sale.

If you are unsuccessful at the auction your holding deposit will be returned within 48 hours.

### SURVEYS AND VALUATIONS

If you would like to arrange a survey or mortgage valuation of this Lot **BEFORE** the auction, please instruct your appointed surveyor to contact Hollis Morgan and we will arrange access for them to inspect the property. Please note that buyers **CANNOT** attend the surveys and the surveyors are responsible for collecting and returning keys to the Hollis Morgan offices in Clifton.

### AUCTION FINANCE & BRIDGING LOANS

Some properties may require specialist auction finance- please contact Hollis Morgan for access to expert advice and whole of market rates from our independent brokers.

Hollis Morgan may receive introductory fees for this service from the broker.

### AUCTION BUYER'S GUIDE VIDEO

We have short video guides for both buying and selling by Public Auction on the Hollis Morgan Website. If you have any further questions regarding the process, please don't hesitate to contact Auction HQ.

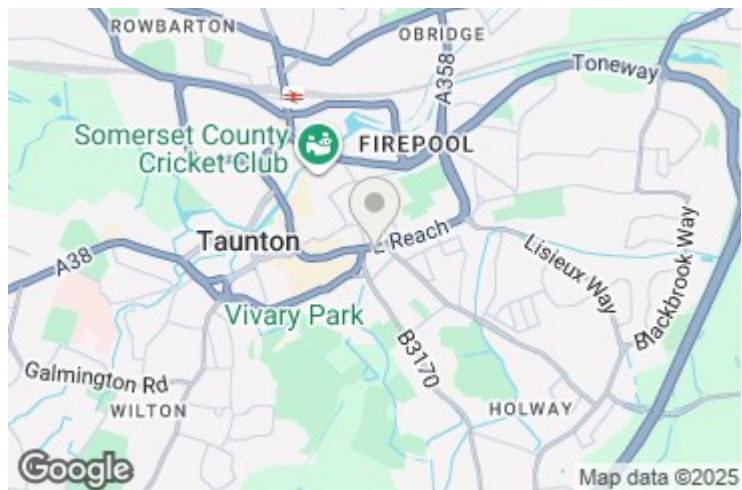
### 2025 CHARITY OF THE YEAR

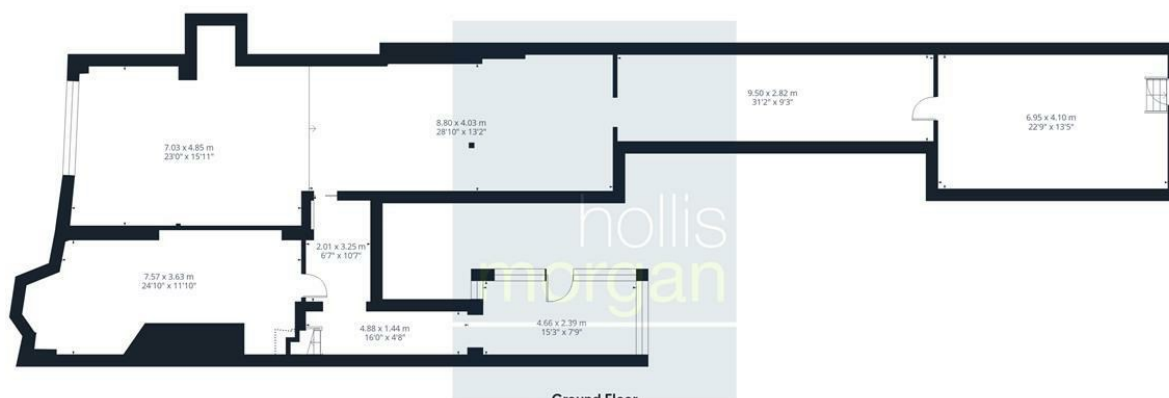
Hollis Morgan is supporting Uncle Pauls Chilli Charity empowering socially disadvantaged people with barriers to learning &/or disabilities based in Butcombe, North Somerset, our land overlooks the Mendip Hills and Blagdon lake. There are three main areas of focus at Uncle Paul's Chilli Charity Education, Wellbeing and Social Prescribing – visit [www.chillicharity.org.uk/](http://www.chillicharity.org.uk/) for more details or the Hollis Morgan Charity Page of our website.

### AUCTION PROPERTY DETAILS DISCLAIMER

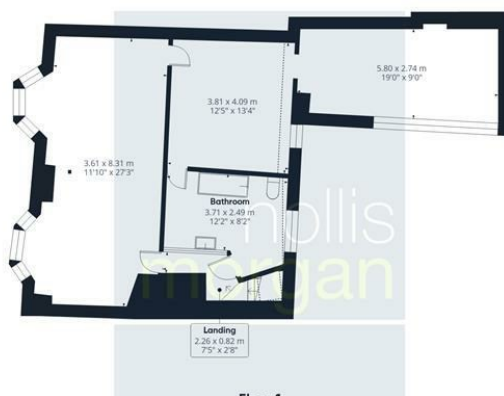
Hollis Morgan endeavour to make our sales details clear, accurate and reliable in line with the Consumer Protection from Unfair Trading Regulations 2008 but they should not be relied on as statements or representations of fact, and they do not constitute any part of an offer or contract. All Hollis Morgan references to planning, tenants, boundaries, potential development, tenure etc is to be superseded by the information contained in the legal pack. It should not be assumed that this property has all the necessary Planning, Building Regulation, or other consents. Any services, appliances and heating system(s) listed have not been checked or tested. Please note that in some instances the photographs may have been taken using a wide-angle lens. The seller does not make any representation or give any warranty in relation to the property, and we have no authority to do so on behalf of the seller.

## 150 East Reach, Taunton, Somerset, TA1 3HT





Ground Floor



Floor 1

Approximate total area<sup>(1)</sup>

252.1 m<sup>2</sup>  
2715 ft<sup>2</sup>

Reduced headroom

2.1 m<sup>2</sup>  
23 ft<sup>2</sup>

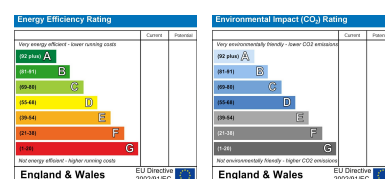
(1) Excluding balconies and terraces

Reduced headroom

Below 1.5 m/5 ft

Calculations reference the RICS IPMS 3C standard. Measurements are approximate and not to scale. This floor plan is intended for illustration only.

GIRAFFE360



e-mail: [post@hollismorgan.co.uk](mailto:post@hollismorgan.co.uk) [www.hollismorgan.co.uk](http://www.hollismorgan.co.uk)

9 Waterloo Street, Clifton, Bristol BS8 4BT. Telephone: **0117 973 65 65**

Hollis Morgan Property Limited, registered in England, registered 7275716. Registered address, 5 Upper Belgrave Road, Clifton, Bristol BS8 2XQ