

Residential Development Land Sales



4, Hopkins Street, Weston-Super-Mare, North Somerset, BS23 1RS

Sold @ Auction £150,000

Hollis Morgan – SEPTEMBER LIVE ONLINE AUCTION – A Freehold BLOCK OF 3 X FLATS (1420 Sq Ft)
now in need of MODERNISATION | VACANT and close to SEA FRONT.

4, Hopkins Street, Weston-Super-Mare, North Somerset, BS23 1RS

FOR SALE BY LIVE ONLINE AUCTION

*** SOLD @ SEPTEMBER LIVE ONLINE AUCTION FOR UNDISCLOSED AMOUNT ***

ADDRESS | Flats 1 - 3, 4 Hopkins Street, Weston-Super-Mare, North Somerset BS23 1RS

Lot Number 23

The Live Online Auction is on Wednesday 17th September 2025 @ 17:30

Registration Deadline is on Monday 15th September 2025 @ 16:00

The Auction will be streamed LIVE ONLINE via the Hollis Morgan website & you can choose to bid by telephone, proxy or via your computer.

Registration is a simple online process – please visit the Hollis Morgan auction website and click “REGISTER TO BID”

THE PROPERTY

A Freehold mid terraced property with accommodation (1420 Sq Ft) arranged over three floors comprising 3 self contained flats with rear garden and outbuilding.

Sold with vacant possession.

Schedule of accommodation

Ground Floor - 1 Bed | 477 Sq Ft

First Floor - 2 Bed | 465 Sq FT

Top Floor - Studio 379 Sq Ft

Tenure - Freehold

Council Tax - Band A

EPC - Flat 1: E, Flat 2: D, Flat 3: E

THE OPPORTUNITY

FLATS | MODERNISATION

The flats have been let for a number of years (now vacant) and require modernisation with scope for both resale and continued rental.

In addition there is a outbuilding in the rear garden and additional side access that may be exploited to increase and improve the accommodation.

Please refer to independent rental appraisal.

FAMILY HOME | HMO

There is potential to convert the property back into a single dwelling as either an HMO or family home.

All above subject to gaining the necessary consents.

LOCATION

Weston Super Mare is a popular seaside town located on the Bristol Channel coast of North Somerset situated approximately 18 miles (29 km) south-west of Bristol and has a population of approximately 80,000 people. The town has a long history as a popular holiday destination, with a sandy beach that stretches for over two miles (3.2 km) and a variety of attractions and activities for visitors. The town centre has a mix of old and modern buildings, with several historic landmarks such as the Grand Pier, the Winter Gardens Pavilion, and the

Birnbeck Pier. Westons main attraction is its beach, which is backed by a wide promenade and a range of amenities such as cafes, restaurants, and shops. The Grand Pier is a popular destination for families, with a variety of fairground rides, arcade games, and attractions. The town also has several parks and green spaces, including the 12-acre Grove Park, which has a children's play area, a boating lake, and a miniature railway. Other popular parks include Clarence Park and Ashcombe Park, both of which offer picturesque settings for picnics and walks. Weston is well connected with the M5 motorway running nearby and regular train services to Bristol, Bath, and other major cities. The town also has its own railway station, which is located within walking distance of the town center and the beach.

RENTAL APPRAISAL

What rent can we achieve for you?

Mendip Property Management are confident this property would make a good rental investment if brought to a standard suitable for the professional rental market. Jason Virjee of Mendip Property Management suggests a rent in the region of;

Flats 1 - 3, 4 Hopkins Street, Weston-Super-Mare:

Ground Floor - £650.00

1st Floor - £675.00

Top Floor - £600.00

Total: £1925.00pcm

If you would like to discuss more detail on the potential for rental, you can call me on 01275 332779 or email (enquiry@mendipproperty.com) for a no obligation discussion. I am always happy to advise investors on maximising their investment.

SOLICITORS & COMPLETION

Deborah Stone

Wards

01934 413535

deborah.stone@wards.uk.com

www.wards.uk.com

EXTENDED COMPLETION

Completion is set for 8 weeks or earlier subject to mutual consent.

IMPORTANT AUCTION INFORMATION

VIEWINGS

Please submit a viewing request online and we will contact you to organise an appointment.

We will send you an email and text to confirm the appointment time and the full property address.

Viewings are supervised by a member of the Hollis Morgan Auction team who will meet you at the property.

MATERIAL INFORMATION

Information including utilities, Electricity supply, Water supply, Sewerage, Heating, Broadband, Mobile signal / coverage, Parking, Building safety, Restrictions and rights, Rights and

4, Hopkins Street, Weston-Super-Mare, North Somerset, BS23 1RS

easements, Flood risk, Erosion risk, Coastal erosion risk, Planning permission for proposal for development, Property accessibility / adaptations, Coalfield or mining area all of which will be supplied within the legal pack that can be accessed for free via the Hollis Morgan website or via your EIG account.

ONLINE LEGAL PACKS

Digital Copies of the Online legal pack can be downloaded Free of Charge.

Please visit the Hollis Morgan Website and select the chosen lot from our Current Auction List.

Press the GREEN button to "Download Legal Packs" For the first visit you will be required to register simply with your email and a password.

Having set up your account you can download legal packs or if they are not yet available, they will automatically be sent to you when we receive them.

You will be automatically updated by email if any new information is added.

There will be a note added to the list to confirm AUCTION PACK NOW COMPLETE when no further information is due to be added.

*** STAY UPDATED *** By registering for the legal pack we can ensure you are kept updated on any changes to this Lot in the build up to the sale.

BUYER'S PREMIUM

Please be aware all purchasers are subject to a £1,500 + VAT (£1,800 inc VAT) buyer's premium which is ALWAYS payable upon exchange of contracts whether the sale is concluded before, during or after the auction date.

GUIDE PRICE

An indication of the seller's current minimum acceptable price at auction. The guide price or range of guide prices is given to assist consumers in deciding whether to pursue a purchase. It is usual, but not always the case, that a provisional reserve range is agreed between the seller and the auctioneer at the start of marketing. As the reserve is not fixed at this stage and can be adjusted by the seller at any time up to the day of the auction in the light of interest shown during the marketing period, a guide price is issued. This guide price can be shown in the form of a minimum and maximum price range within which an acceptable sale price (reserve) would fall, or as a single price figure within 10% of which the minimum acceptable price (reserve) would fall. A guide price is different to a reserve price (see separate definition). Both the guide price and the reserve price can be subject to change up to and including the day of the auction.

RESERVE PRICE

The seller's minimum acceptable price at auction and the figure below which the auctioneer cannot sell. The reserve price is not disclosed and remains confidential between the seller and the auctioneer. Both the guide price and the reserve price can be subject to change up to and including the day of the auction.

PRE AUCTION OFFERS

Some vendors are willing to consider offers prior to the auction. Pre auction offers can ONLY be submitted by completing the online PRE AUCTION OFFER FORM

The form can be found on the Hollis Morgan website on the individual auction property listing.

Please note offers will not be considered until you have inspected the COMPLETE LEGAL PACK once it has been released.

There will be a note added to the list to confirm AUCTION PACK NOW COMPLETE when our client's solicitor informs us no further information is due to be added.

In the event of an offer being accepted the property will only be removed from the online auction and viewings stopped once contracts have successfully EXCHANGED subject to the standard auction terms and payment of the buyer's premium (£1,800 Inclusive of VAT) to Hollis Morgan.

Contracts can be exchanged via the solicitors or at the Hollis Morgan offices by appointment only.

REGISTRATION PROCESS

The registration process is extremely simple – visit the Hollis Morgan auction website and click on the "Register to Bid" button.

The "Register to Bid" button can be found on the auction home page or on the individual lot listings.

Please note this function is not available on Rightmove or Zoopla.

Stage 1 – Complete the Online Bidding Form

Stage 2 – Upload your certified ID

Stage 3 – Invitation to bid

Stage 4 – Pay your security deposit (£6,800)

You are now ready to bid – Good luck!

If your bid is successful, the balance of the deposit monies must be transferred to our client account within 24 hours of the auction sale.

If you are unsuccessful at the auction your holding deposit will be returned within 48 hours.

SURVEYS AND VALUATIONS

If you would like to arrange a survey or mortgage valuation of this Lot BEFORE the auction, please instruct your appointed surveyor to contact Hollis Morgan and we will arrange access for them to inspect the property. Please note that buyers CANNOT attend the surveys and the surveyors are responsible for collecting and returning keys to the Hollis Morgan offices in Clifton.

AUCTION FINANCE & BRIDGING LOANS

Some properties may require specialist auction finance- please contact Hollis Morgan for access to expert advice and whole of market rates from our independent brokers.

Hollis Morgan may receive introductory fees for this service from the broker.

AUCTION BUYER'S GUIDE VIDEO

4, Hopkins Street, Weston-Super-Mare, North Somerset, BS23 1RS

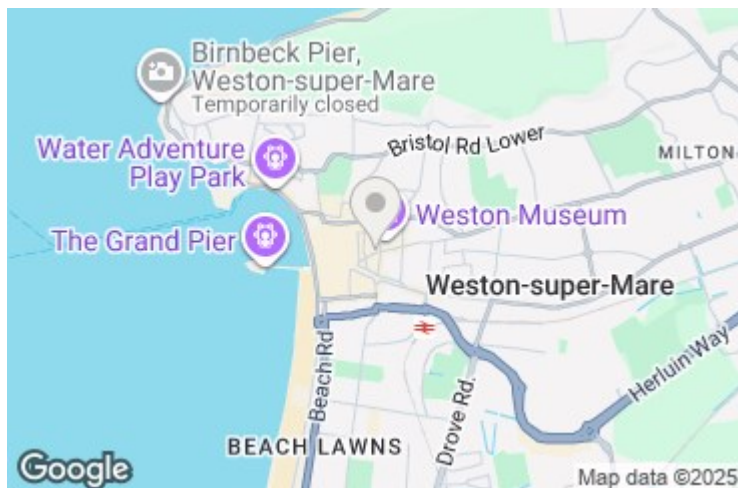
We have short video guides for both buying and selling by Public Auction on the Hollis Morgan Website. If you have any further questions regarding the process, please don't hesitate to contact Auction HQ.

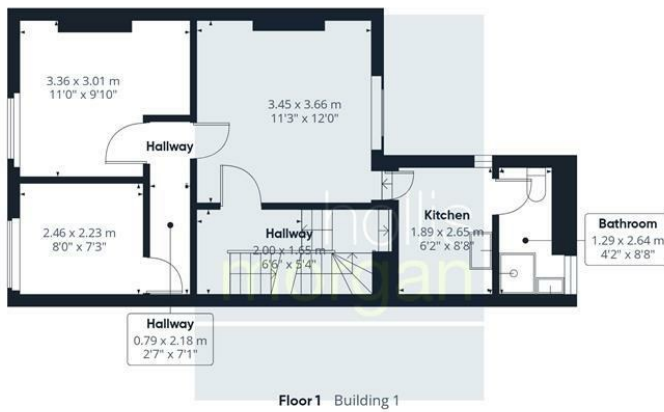
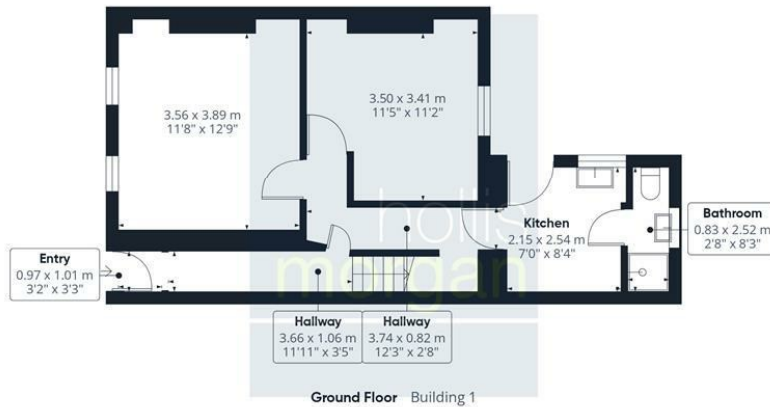
2025 CHARITY OF THE YEAR

Hollis Morgan is supporting Uncle Pauls Chilli Charity empowering socially disadvantaged people with barriers to learning &/or disabilities based in Butcombe, North Somerset, our land overlooks the Mendip Hills and Blagdon lake. There are three main areas of focus at Uncle Paul's Chilli Charity Education, Wellbeing and Social Prescribing – visit www.chillicharity.org.uk/ for more details or the Hollis Morgan Charity Page of our website.

AUCTION PROPERTY DETAILS DISCLAIMER

Hollis Morgan endeavour to make our sales details clear, accurate and reliable in line with the Consumer Protection from Unfair Trading Regulations 2008 but they should not be relied on as statements or representations of fact, and they do not constitute any part of an offer or contract. All Hollis Morgan references to planning, tenants, boundaries, potential development, tenure etc is to be superseded by the information contained in the legal pack. It should not be assumed that this property has all the necessary Planning, Building Regulation, or other consents. Any services, appliances and heating system(s) listed have not been checked or tested. Please note that in some instances the photographs may have been taken using a wide-angle lens. The seller does not make any representation or give any warranty in relation to the property, and we have no authority to do so on behalf of the seller.





Approximate total area⁽¹⁾
 131.9 m²
 1420 ft²

(1) Excluding balconies and terraces

Calculations reference the RICS IPMS 3C standard. Measurements are approximate and not to scale. This floor plan is intended for illustration only.

GIRAFFE360