

**Flats 1 - 4, 11 Arley Hill, Cotham, Bristol, BS6 5PH**

**Auction Guide Price +++ £435,000**

Hollis Morgan – MAY LIVE ONLINE AUCTION – A Freehold SEMI DETACHED PERIOD HOUSE ( 1194 Sq Ft ) arranged as 4 x VACANT FLATS with scope for FAMILY HOME with REAR GARDEN.

# Flats 1 - 4, 11 Arley Hill, Cotham, Bristol, BS6 5PH

## FOR SALE BY LIVE ONLINE AUCTION

ADDRESS | 11 Arley Hill, Cotham, Bristol BS6 5PH

Lot Number TBC

The Live Online Auction is on Wednesday 14th May 2025 @ 17:30

Registration Deadline is on Monday 12th May 2025 @ 16:00

The Auction will be streamed LIVE ONLINE via the Hollis Morgan website & you can chose to bid by telephone, proxy or via your computer.

Registration is a simple online process – please visit the Hollis Morgan auction website and click “REGISTER TO BID”

## THE PROPERTY

A Freehold semi detached period property ( 1194 Sq Ft ) occupying an elevated position with rear garden and side access. The property is currently arranged as 4 self contained flats with independent kitchen and shared bathroom facilities. Sold with vacant possession.

Tenure - Freehold

Usage Class - C3 & C4.

Council Tax - Band E

EPC - D, D, D, D

Utilities, Rights & Restrictions - Please refer to the Legal Pack

Flood Risk - Please refer to the Legal Pack

## THE OPPORTUNITY

VACANT | INVESTMENT

The property has been let for a number of years ( We understand Usage Class C3 | C4 but please refer to legal pack ) and is now vacant.

The current set up has shared bathroom facilities and interested parties may look to create 2 independent flats ( Ground and First Floor )

Please refer to independent rental appraisal.

## FAMILY HOME

The property would suit conversion back into a single residential dwelling / family home with rear garden and scope for rear extension in this sought after residential location.

All above subject to gaining the necessary consents.

## LOCATION

Arley Hill and the surrounding areas is a popular and attractive location on the Cotham Redland borders within a short walk of the University of Bristol, the City Centre and Cheltenham Road. The property is ideally suited for access to Whiteladies Road and its stylish bars, restaurants and cinema, Gloucester road with its vibrant independent shops, bars and restaurants and the city Centre close by with its array of business, educational, leisure, shopping and entertainment facilities, including the impressive Cabot Circus complex. Local bus routes are located within a short walking distance whilst Redland train station is only 1/4 mile. The motorway network is also easily accessible.

## RENTAL APPRAISAL

What rent can we achieve for you?

The Bristol Residential Letting Co. are confident this property would make a good rental investment if brought to a standard suitable for the professional rental market. Danny Dean of The Bristol Residential Letting Co suggests a rent in the region of;

11, Arley Hill – Family home £4000+pcm | 2 flats £1400pcm++ depending on size & finish.

If you would like to discuss more detail on the potential for rental, you can call me on 07738766640 or email (danny@bristolreslet.com) for a no obligation discussion. I am always happy to advise investors on maximising their investment.

I will look forward to hearing from you and helping you with your investment.

## SOLICITORS & COMPLETION

Adam Crawford

Penningtons Manches Cooper

01256 407165

Adam.Crawford@penningtonslaw.com

<https://www.penningtonslaw.com/>

## EXTENDED COMPLETION

Completion is set for 8 weeks or earlier subject to mutual consent.

## IMPORTANT AUCTION INFORMATION

### VIEWINGS

Please submit a viewing request online and we will contact you to organise an appointment.

We will send you an email and text to confirm the appointment time and the full property address.

Viewings are supervised by a member of the Hollis Morgan Auction team who will meet you at the property.

## ONLINE LEGAL PACKS

Digital Copies of the Online legal pack can be downloaded Free of Charge.

Please visit the Hollis Morgan Website and select the chosen lot from our Current Auction List.

Press the GREEN button to "Download Legal Packs" For the first visit you will be required to register simply with your email and a password.

Having set up your account you can download legal packs or if they are not yet available, they will automatically be sent to you when we receive them.

You will be automatically updated by email if any new information is added.

There will be a note added to the list to confirm AUCTION PACK NOW COMPLETE when no further information is due to be added.

\*\*\* STAY UPDATED \*\*\* By registering for the legal pack we can ensure you are kept updated on any changes to this Lot in the build up to the sale.

## BUYER'S PREMIUM

Please be aware all purchasers are subject to a £1,500 + VAT (£1,800 inc VAT) buyer's premium which is ALWAYS payable

## Flats 1 - 4, 11 Arley Hill, Cotham, Bristol, BS6 5PH

upon exchange of contracts whether the sale is concluded before, during or after the auction date.

### GUIDE PRICE

An indication of the seller's current minimum acceptable price at auction. The guide price or range of guide prices is given to assist consumers in deciding whether to pursue a purchase. It is usual, but not always the case, that a provisional reserve range is agreed between the seller and the auctioneer at the start of marketing. As the reserve is not fixed at this stage and can be adjusted by the seller at any time up to the day of the auction in the light of interest shown during the marketing period, a guide price is issued. This guide price can be shown in the form of a minimum and maximum price range within which an acceptable sale price (reserve) would fall, or as a single price figure within 10% of which the minimum acceptable price (reserve) would fall. A guide price is different to a reserve price (see separate definition). Both the guide price and the reserve price can be subject to change up to and including the day of the auction.

### RESERVE PRICE

The seller's minimum acceptable price at auction and the figure below which the auctioneer cannot sell. The reserve price is not disclosed and remains confidential between the seller and the auctioneer. Both the guide price and the reserve price can be subject to change up to and including the day of the auction.

### PRE AUCTION OFFERS

Some vendors are willing to consider offers prior to the auction. Pre auction offers can ONLY be submitted by completing the online PRE AUCTION OFFER FORM

The form can be found on the Hollis Morgan website on the individual auction property listing.

Please note offers will not be considered until you have inspected the COMPLETE LEGAL PACK once it has been released.

There will be a note added to the list to confirm AUCTION PACK NOW COMPLETE when our client's solicitor informs us no further information is due to be added.

In the event of an offer being accepted the property will only be removed from the online auction and viewings stopped once contracts have successfully EXCHANGED subject to the standard auction terms and payment of the buyer's premium (£1,800 Inclusive of VAT) to Hollis Morgan.

Contracts can be exchanged via the solicitors or at the Hollis Morgan offices by appointment only.

### REGISTRATION PROCESS

The registration process is extremely simple – visit the Hollis Morgan auction website and click on the "Register to Bid" button.

The "Register to Bid" button can be found on the auction home page or on the individual lot listings.

Please note this function is not available on Rightmove or Zoopla.

Stage 1 – Complete the Online Bidding Form

Stage 2 – Upload your certified ID

Stage 3 – Invitation to bid

Stage 4 – Pay your security deposit (£6,800)

You are now ready to bid – Good luck!

If your bid is successful, the balance of the deposit monies must be transferred to our client account within 24 hours of the auction sale.

If you are unsuccessful at the auction your holding deposit will be returned within 48 hours.

### SURVEYS AND VALUATIONS

If you would like to arrange a survey or mortgage valuation of this Lot BEFORE the auction, please instruct your appointed surveyor to contact Hollis Morgan and we will arrange access for them to inspect the property. Please note that buyers CANNOT attend the surveys and the surveyors are responsible for collecting and returning keys to the Hollis Morgan offices in Clifton.

### AUCTION FINANCE & BRIDGING LOANS

Some properties may require specialist auction finance- please contact Hollis Morgan for access to expert advice and whole of market rates from our independent brokers.

Hollis Morgan may receive introductory fees for this service from the broker.

### AUCTION BUYER'S GUIDE VIDEO

We have short video guides for both buying and selling by Public Auction on the Hollis Morgan Website. If you have any further questions regarding the process, please don't hesitate to contact Auction HQ.

### 2025 CHARITY OF THE YEAR

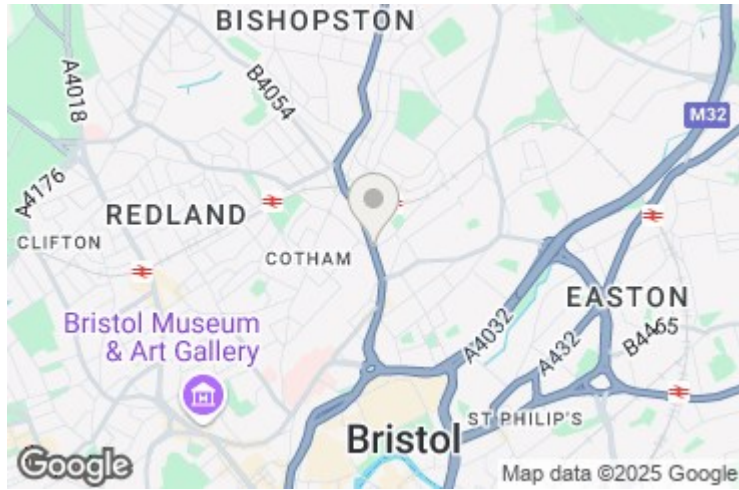
Hollis Morgan is supporting Uncle Pauls Chilli Charity empowering socially disadvantaged people with barriers to learning &/or disabilities based in Butcombe, North Somerset, our land overlooks the Mendip Hills and Blagdon lake. There are three main areas of focus at Uncle Paul's Chilli Charity Education, Wellbeing and Social Prescribing – visit [www.chillicharity.org.uk/](http://www.chillicharity.org.uk/) for more details or the Hollis Morgan Charity Page of our website.

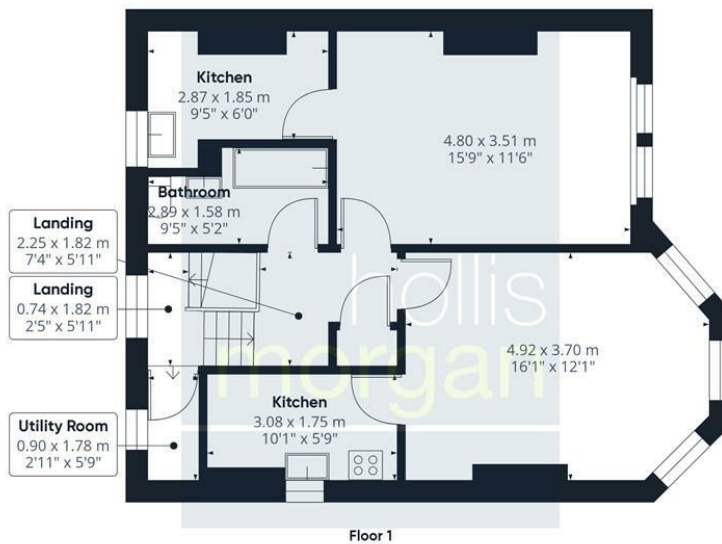
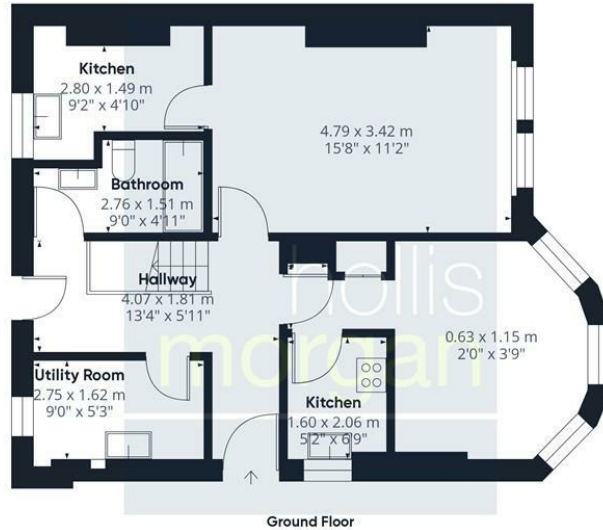
### AUCTION PROPERTY DETAILS DISCLAIMER

Hollis Morgan endeavour to make our sales details clear, accurate and reliable in line with the Consumer Protection from Unfair Trading Regulations 2008 but they should not be relied on as statements or representations of fact, and they do not constitute any part of an offer or contract. All Hollis Morgan references to planning, tenants, boundaries, potential development, tenure etc is to be superseded by the information contained in the legal pack. It should not be assumed that this property has all the necessary Planning, Building Regulation, or other consents. Any services, appliances and heating system(s) listed have not been checked or tested. Please note that in some instances the photographs may have been taken using a wide-angle lens. The seller does not make any

## Flats 1 - 4, 11 Arley Hill, Cotham, Bristol, BS6 5PH

representation or give any warranty in relation to the property, and we have no authority to do so on behalf of the seller.





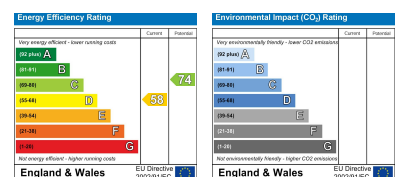
**Approximate total area<sup>(1)</sup>**  
 111 m<sup>2</sup>  
 1194.81 ft<sup>2</sup>

(1) Excluding balconies and terraces

While every attempt has been made to ensure accuracy, all measurements are approximate, not to scale. This floor plan is for illustrative purposes only.

Calculations are based on RICS IPMS 3C standard.

GIRAFFE360



**e-mail:** [post@hollismorgan.co.uk](mailto:post@hollismorgan.co.uk) [www.hollismorgan.co.uk](http://www.hollismorgan.co.uk)

9 Waterloo Street, Clifton, Bristol BS8 4BT. Telephone: **0117 973 65 65**

Hollis Morgan Property Limited, registered in England, registered 7275716. Registered address, 5 Upper Belgrave Road, Clifton, Bristol BS8 2XQ