



12 Norfolk Road | Buntingford | SG9 9AN

Asking Price £375,000

Spacious three double bedroom Victorian terraced house with two reception rooms situated close to the town centre. Of particular note is the downstairs cloakroom/WC and first floor bathroom. Other benefits include uPVC double glazing, gas central heating, ample fitted storage and a rear garden with a block built shed. All the town's schools and other amenities are within walking distance. This attractive property is being offered with NO UPPER CHAIN and an early viewing is highly recommended!



CHRIS DELLAR
PROPERTIES

Your estate agent

58a High Street, Buntingford,
Herts, SG9 9AH

T 01763 272605

E enquiries@chrisdellar.co.uk

www.chrisdellar.co.uk

Replacement Front Door

Leading into:

Lounge

15'2 x 9'4 (4.62m x 2.84m)

uPVC double glazed sash window to front. Double radiator. Feature fireplace with hearth and mantle. Meter cupboard. Wood laminate floor covering. Archway to:

Dining Room

15'2 x 9'4 (4.62m x 2.84m)

uPVC double glazed tilt & turn window with aspect to rear hallway. Staircase to first floor with good size understairs storage cupboard. Wood laminate floor covering. Archway to:

Kitchen

10'0 x 7'6 (3.05m x 2.29m)

uPVC double glazed window to rear with view over garden. Range of wall & base units incorporating roll top work surfaces, drawers and one & a half bowl single drainer sink unit with mixer taps. Integrated electric oven & grill, hob and extractor. Space for fridge/freezer. Wall mounted gas fired boiler. Ceiling spotlights. Ceramic floor tiles. uPVC double glazed door to:

Rear Hallway

Glass roof allowing lots of light into hallway and rooms off. Sliding door to cloakroom. uPVC double glazed door to rear garden. Open to:

Utility Recess

Space & plumbing for washing machine with roll top work surface above.

Downstairs Cloakroom/WC

uPVC double glazed window to rear with obscure glass. White wash hand basin and low flush WC. Tiling to dado height. Vinyl floor tiles.

First Floor Landing

Access to partly boarded loft space with light. Doors to bedrooms & bathroom.

Bedroom One

11'9 x 9'9 (3.58m x 2.97m)

uPVC double glazed window to front. Radiator.

Bedroom Two

12'0 x 8'7 (3.66m x 2.62m)

uPVC double glazed window to front. Radiator.

Bedroom Three

9'8 x 9'5 (2.95m x 2.87m)

uPVC double glazed window to front. Radiator.

Bathroom

uPVC double glazed window to rear with obscure glass. Suite comprising panel enclosed bath with shower over, pedestal wash hand basin and low flush WC. Tiling to splashbacks. Chrome heated towel rail. Electric shaver point. Vinyl floor covering.

EXTERIOR

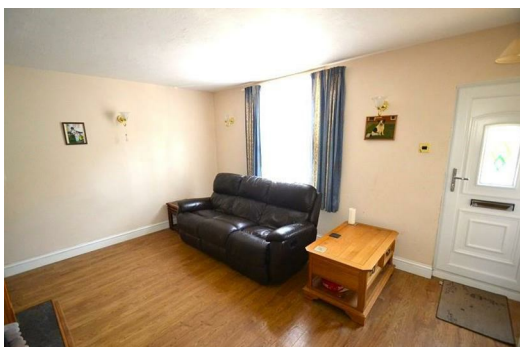
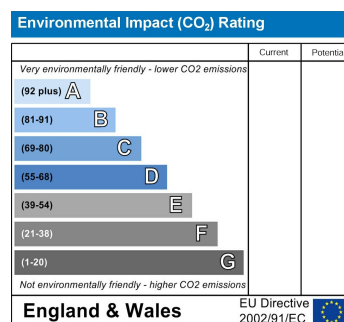
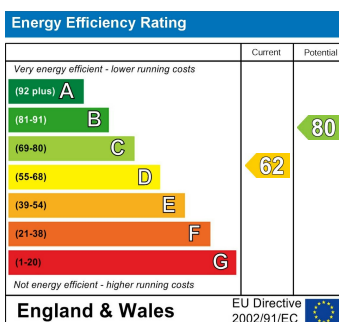
Rear Garden

Good size patio. Raised Astro turf lawn. Block built storage shed. Second patio. Gated tunnelled access back to front of house.

Disclaimer

We are not qualified to test any apparatus, equipment, fixtures and fittings or services so cannot verify that they are in working order or fit for their intended purpose. We do not have access to any lease documents or property deeds; therefore prospective purchasers should rely on information given by their Solicitors on these matters. Measurements are approximate and are only intended to provide a guide.

Energy Performance Certificate



CHRIS DELLAR
PROPERTIES

Your estate agent

58a High Street, Buntingford,
Herts, SG9 9AH
T 01763 272605
E enquiries@chrisdellar.co.uk

www.chrisdellar.co.uk