



NEWINGTON
LONDON

1 Bedrooms

Apartment

Located in London

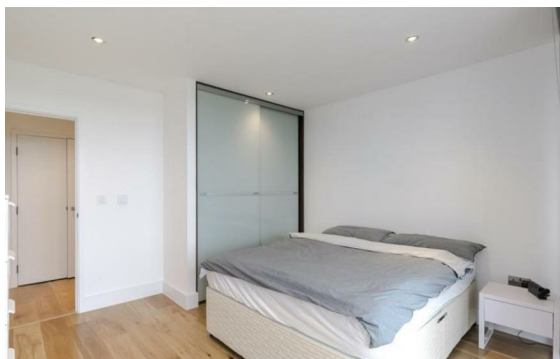
£590 Per Month



info@newingtonstates.com

<http://www.newingtonstates.com>

020 7724 2233



NEWINGTON

LONDON

60 Upper Montagu Street

London

W1H 1SN

020 7724 2233

info@newingtonstates.com

A well-presented top-floor one-bedroom apartment featuring wooden flooring throughout, a contemporary kitchen and bathroom, and ample built-in storage.

Ideally positioned just off the fashionable Marylebone High Street, the property offers excellent access to local boutiques, cafés, and restaurants, as well as convenient transport links via Baker Street and Bond Street underground stations.

EPC rating: C

Energy Efficiency Rating: C

Agents Note: Whilst every care has been taken to prepare these particulars, they are for guidance purposes only. All measurements are approximate and are for general guidance purposes only and whilst every care has been taken to ensure their accuracy, they should not be relied upon and potential buyers/tenants are advised to recheck the measurements.

<http://www.newingtonstates.com>