



NEWINGTON
LONDON

1 Bedrooms

Apartment

Located in London

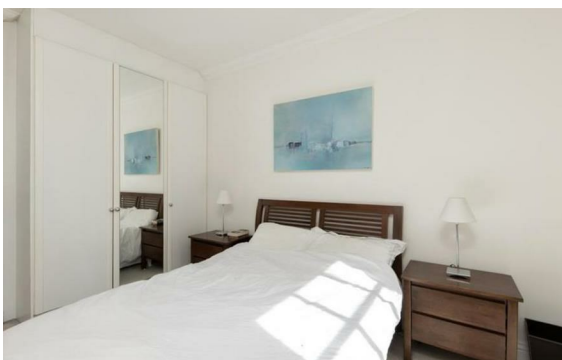
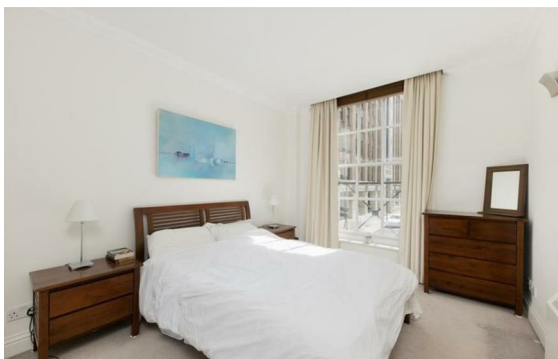
£675 Per Month



info@newingtonstates.com

<http://www.newingtonstates.com>

020 7724 2233



A bright and spacious one-bedroom apartment set on the fifth floor of a popular development. The property features reception room filled with natural light, an open-plan fitted kitchen, a generous double bedroom, and a well-sized bathroom.

The building benefits from a day porter and passenger lift and is ideally located moments from Selfridges, Oxford Street, and Hyde Park, with excellent transport links via Marble Arch and Bond Street underground stations.

EPC rating: D

Energy Efficiency Rating: D

Agents Note: Whilst every care has been taken to prepare these particulars, they are for guidance purposes only. All measurements are approximate and are for general guidance purposes only and whilst every care has been taken to ensure their accuracy, they should not be relied upon and potential buyers/tenants are advised to recheck the measurements.

NEWINGTON LONDON

60 Upper Montagu Street

London

W1H 1SN

020 7724 2233

info@newingtonstates.com

<http://www.newingtonstates.com>