



NEWINGTON
LONDON

1 Bedrooms

Apartment

Located in London

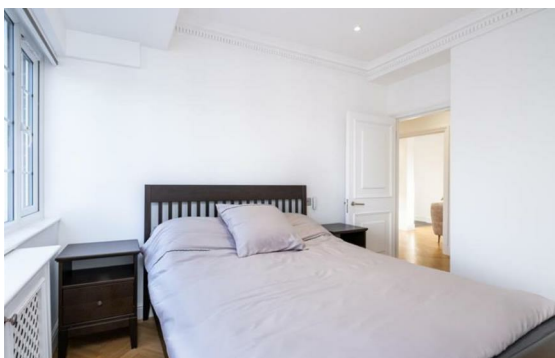
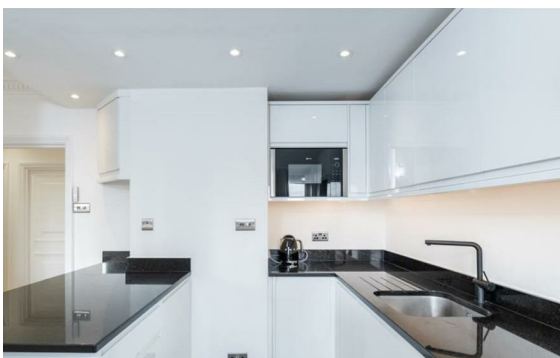
£975 Per Month



info@newingtonstates.com

<http://www.newingtonstates.com>

020 7724 2233



Set on the third floor of a refined building with 24-hour portage and lift access, this well-presented one-bedroom apartment offers modern and practical living.

The accommodation comprises a bright open-plan reception room with a fully fitted kitchen, a well-proportioned bedroom, and a sleek contemporary bathroom. The apartment further benefits from wooden flooring throughout, creating a clean and modern finish.

EPC rating: C

Energy Efficiency Rating: C

Agents Note: Whilst every care has been taken to prepare these particulars, they are for guidance purposes only. All measurements are approximate and are for general guidance purposes only and whilst every care has been taken to ensure their accuracy, they should not be relied upon and potential buyers/tenants are advised to recheck the measurements.

NEWINGTON LONDON

60 Upper Montagu Street

London

W1H 1SN

020 7724 2233

info@newingtonstates.com

<http://www.newingtonstates.com>