



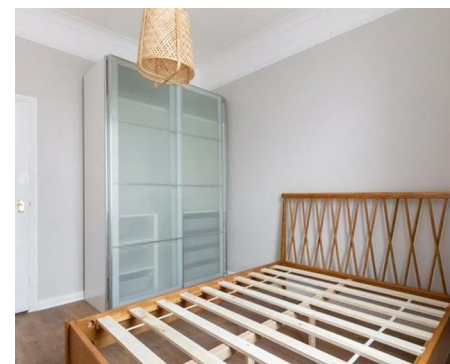
NEWINGTON  
LONDON

1 Bedrooms

Apartment

Located in London

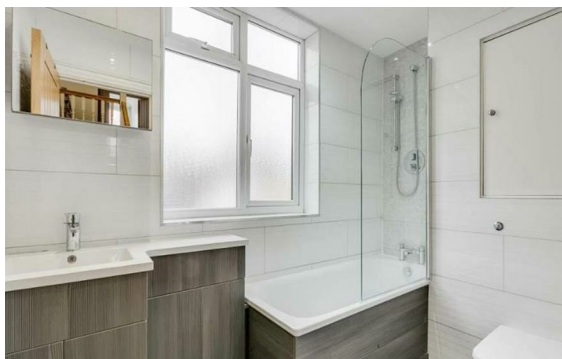
£550 Per Month



info@newingtonstates.com

<http://www.newingtonstates.com>

020 7724 2233



A bright and spacious one-bedroom, one-bathroom apartment, recently refurbished and finished to a good standard. The property features wooden flooring throughout and offers well-proportioned accommodation with excellent natural light.

Ideally located off the Edgware Road, the apartment benefits from a prime position between Paddington and Marylebone, with easy access to local amenities and transport links.

EPC rating: C

### Energy Efficiency Rating: C

Agents Note: Whilst every care has been taken to prepare these particulars, they are for guidance purposes only. All measurements are approximate and are for general guidance purposes only and whilst every care has been taken to ensure their accuracy, they should not be relied upon and potential buyers/tenants are advised to recheck the measurements.

# NEWINGTON

## LONDON

60 Upper Montagu Street

London

W1H 1SN

020 7724 2233

[info@newingtonstates.com](mailto:info@newingtonstates.com)

<http://www.newingtonstates.com>