



NEWINGTON
LONDON

1 Bedrooms

Apartment

Located in London

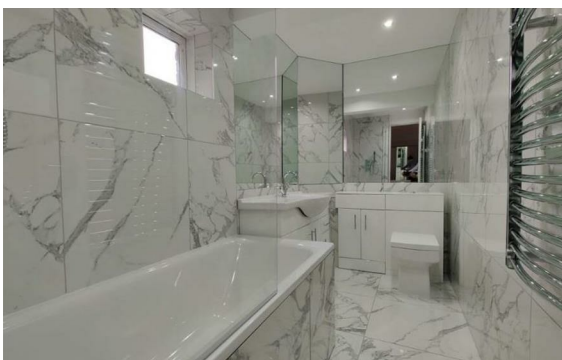
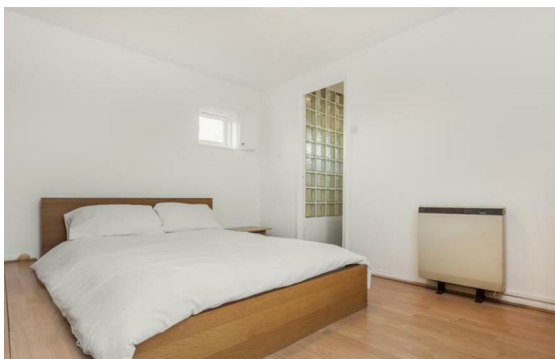
£650 Per Month



info@newingtonstates.com

<http://www.newingtonstates.com>

020 7724 2233



A well-presented one-bedroom apartment located on the fourth floor of a portered building in Hyde Park, W2. Finished to a high standard, the property features light wooden flooring throughout and excellent natural light.

The accommodation includes a fully fitted kitchen, modern bathroom, double bedroom with built-in wardrobes, and a bright reception room with large windows. The building also benefits from lift access.

EPC rating: C

Energy Efficiency Rating: C

Agents Note: Whilst every care has been taken to prepare these particulars, they are for guidance purposes only. All measurements are approximate and are for general guidance purposes only and whilst every care has been taken to ensure their accuracy, they should not be relied upon and potential buyers/tenants are advised to recheck the measurements.

NEWINGTON LONDON

60 Upper Montagu Street

London

W1H 1SN

020 7724 2233

info@newingtonstates.com

<http://www.newingtonstates.com>