



NEWINGTON
LONDON

2 Bedrooms

Apartment

Located in London

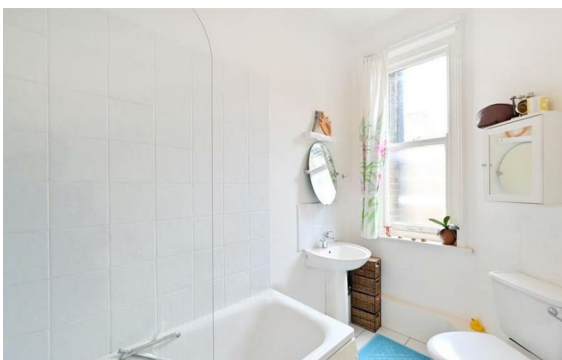
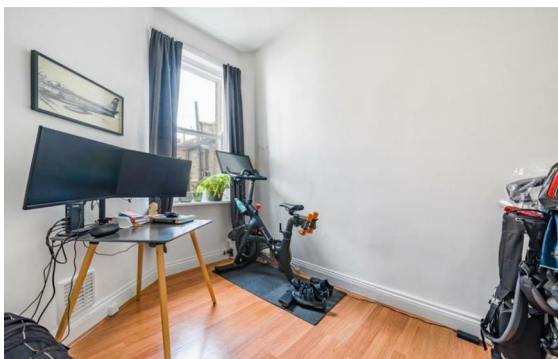
£900 Per Month



info@newingtonstates.com

<http://www.newingtonstates.com>

020 7724 2233



Beautifully arranged on the second floor of a desirable red-brick mansion block, this lovely two-bedroom, two-bathroom apartment offers generous proportions and elegant living. The home includes a bright and spacious reception room, a fully fitted kitchen, a principal bedroom with its own en-suite, a second double bedroom, and a modern family bathroom.

The building benefits from 24-hour portage and lift access, and is superbly positioned for Marylebone's boutique shops, cafés and restaurants. Regent's Park is just a short stroll away, while Baker Street station provides excellent transport connections across London.

EPC Rating: C

Energy Efficiency Rating: C

Agents Note: Whilst every care has been taken to prepare these particulars, they are for guidance purposes only. All measurements are approximate and are for general guidance purposes only and whilst every care has been taken to ensure their accuracy, they should not be relied upon and potential buyers/tenants are advised to recheck the measurements.

NEWINGTON LONDON

60 Upper Montagu Street

London

W1H 1SN

020 7724 2233

info@newingtonstates.com

<http://www.newingtonstates.com>