

NEWINGTON
LONDON

2 Bedrooms

Apartment

Located in London

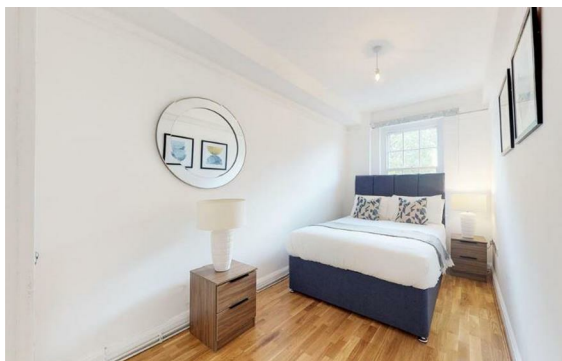
£900 Per Week



info@newingtonstates.com

<http://www.newingtonstates.com>

020 7724 2233



A charming and recently decorated two bedroom apartment situated on a quiet residential street close to the local shops, transport and other amenities in heart of Marylebone. The apartment comprises a spacious reception with a modern fully fitted separate kitchen, two bedrooms and two modern bathrooms.

The immediate area is served by a wide variety of local shops whilst more extensive facilities including underground stations are just a few minutes' walk away on Baker Street (east), Edgware Road (west) and Marble Arch (south).
EPC RATING: C

Energy Efficiency Rating:

Agents Note: Whilst every care has been taken to prepare these particulars, they are for guidance purposes only. All measurements are approximate and are for general guidance purposes only and whilst every care has been taken to ensure their accuracy, they should not be relied upon and potential buyers/tenants are advised to recheck the measurements.

NEWINGTON LONDON

60 Upper Montagu Street

London

W1H 1SN

020 7724 2233

info@newingtonstates.com

<http://www.newingtonstates.com>