



## NEWINGTON LONDON

1 Bedrooms

Apartment

Located in London

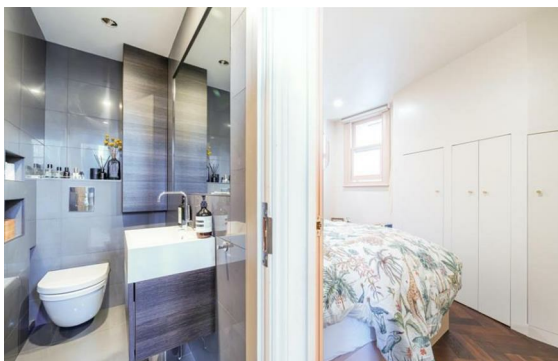
£910 Per Month



info@newingtonstates.com

<http://www.newingtonstates.com>

020 7724 2233



Situated in a highly regarded building with 24-hour portage, this beautifully presented one-bedroom apartment enjoys the convenience of lift access.

The property features a bright open-plan kitchen and reception room, a well-sized bedroom, a contemporary bathroom, and attractive wood flooring throughout, offering a comfortable and modern living space in a prime location.

EPC Rating: C

## Energy Efficiency Rating: C

Agents Note: Whilst every care has been taken to prepare these particulars, they are for guidance purposes only. All measurements are approximate and are for general guidance purposes only and whilst every care has been taken to ensure their accuracy, they should not be relied upon and potential buyers/tenants are advised to recheck the measurements.

# NEWINGTON LONDON

60 Upper Montagu Street

London

W1H 1SN

020 7724 2233

[info@newingtonstates.com](mailto:info@newingtonstates.com)

<http://www.newingtonstates.com>