



NEWINGTON  
LONDON

2 Bedrooms

Apartment

Located in London

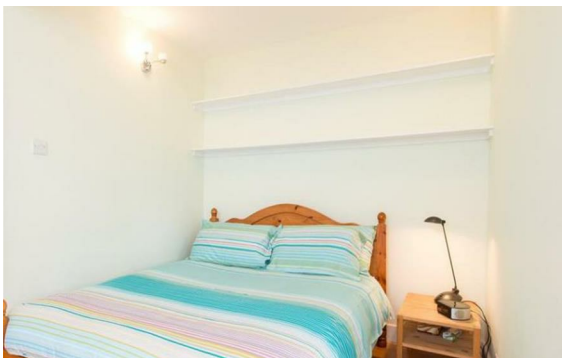
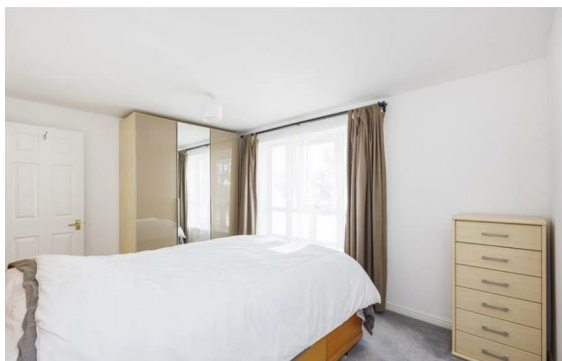
£900 Per Month



[info@newingtonstates.com](mailto:info@newingtonstates.com)

<http://www.newingtonstates.com>

020 7724 2233



Set on the second floor of a charming period building, this spacious flat offers two double bedrooms and two bathrooms, including an en suite. It features a bright living room with an adjoining kitchen and wood flooring throughout.

The building provides a morning porter and is ideally positioned for Baker Street Station, Marylebone High Street, and Regent's Park.

EPC rating: C

## Energy Efficiency Rating: C

Agents Note: Whilst every care has been taken to prepare these particulars, they are for guidance purposes only. All measurements are approximate and are for general guidance purposes only and whilst every care has been taken to ensure their accuracy, they should not be relied upon and potential buyers/tenants are advised to recheck the measurements.

# NEWINGTON LONDON

60 Upper Montagu Street

London

W1H 1SN

020 7724 2233

[info@newingtonstates.com](mailto:info@newingtonstates.com)

<http://www.newingtonstates.com>