



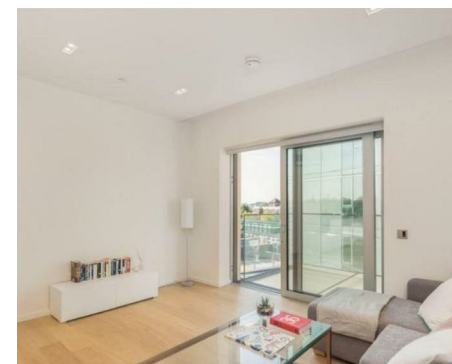
NEWINGTON
LONDON

1 Bedrooms

Apartment

Located in London

£950 Per Month



info@newingtonstates.com

<http://www.newingtonstates.com>

020 7724 2233



A stunning one-bedroom apartment set on the 4th floor of a modern development with lift access. The property boasts wooden flooring, air-conditioning, 24-hour security with CCTV, concierge service, and access to additional amenities such as housekeeping, flat screen TVs, Sky Plus, and broadband.

The accommodation comprises a spacious semi open-plan reception with fully fitted kitchen, a master bedroom with en-suite bathroom, and fitted wardrobes.

EPC rating: C

Energy Efficiency Rating: C

Agents Note: Whilst every care has been taken to prepare these particulars, they are for guidance purposes only. All measurements are approximate and are for general guidance purposes only and whilst every care has been taken to ensure their accuracy, they should not be relied upon and potential buyers/tenants are advised to recheck the measurements.

NEWINGTON LONDON

60 Upper Montagu Street

London

W1H 1SN

020 7724 2233

info@newingtonstates.com

<http://www.newingtonstates.com>