



NEWINGTON  
LONDON

2 Bedrooms

Apartment

Located in London

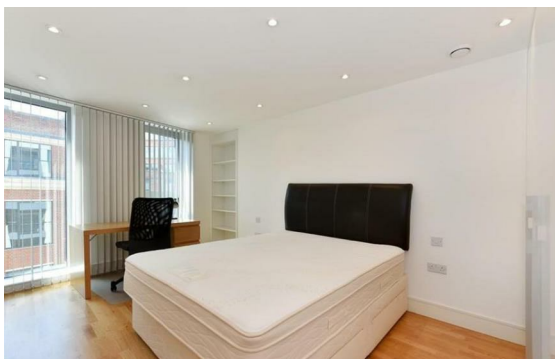
£870 Per Month



info@newingtonstates.com

<http://www.newingtonstates.com>

020 7724 2233



# NEWINGTON LONDON

60 Upper Montagu Street

London

W1H 1SN

020 7724 2233

[info@newingtonstates.com](mailto:info@newingtonstates.com)

A beautifully presented two-bedroom apartment located on the second floor of a prestigious portered development in Paddington. Overlooking the vibrant Paddington Basin, the property boasts an open-plan fully fitted kitchen with reception area offering impressive City views, two double bedrooms with ample storage, and two modern bathrooms.

Ideally positioned just moments from Paddington Station, with excellent shopping and dining options nearby on Praed Street and Edgware Road. The property also benefits from close proximity to universities and local amenities, making it an excellent choice for students and professionals alike.

EPC rating: B

## Energy Efficiency Rating: B

Agents Note: Whilst every care has been taken to prepare these particulars, they are for guidance purposes only. All measurements are approximate and are for general guidance purposes only and whilst every care has been taken to ensure their accuracy, they should not be relied upon and potential buyers/tenants are advised to recheck the measurements.

<http://www.newingtonstates.com>