



NEWINGTON  
LONDON

3 Bedrooms

Apartment

Located in London

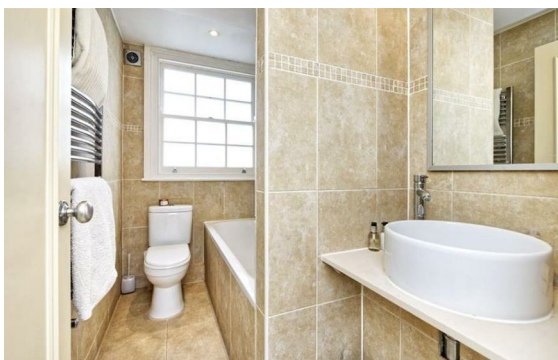
£1,050 Per Month



info@newingtonstates.com

<http://www.newingtonstates.com>

020 7724 2233



# NEWINGTON LONDON

60 Upper Montagu Street

London

W1H 1SN

020 7724 2233

[info@newingtonstates.com](mailto:info@newingtonstates.com)

A well-proportioned three-bedroom apartment on the 6th floor of a sought-after Marylebone building. The property offers two spacious double bedrooms with ample storage, a further single bedroom, and two bathrooms (including one en suite). A grand reception room with a quiet outlook is complemented by a separate fully fitted kitchen.

Residents benefit from lift access, concierge service, and an exceptional location close to Regent's Park, Marylebone High Street, and the West End.

EPC rating: C

## Energy Efficiency Rating: C

Agents Note: Whilst every care has been taken to prepare these particulars, they are for guidance purposes only. All measurements are approximate and are for general guidance purposes only and whilst every care has been taken to ensure their accuracy, they should not be relied upon and potential buyers/tenants are advised to recheck the measurements.

<http://www.newingtonstates.com>