



NEWINGTON
LONDON

2 Bedrooms

Apartment

Located in London

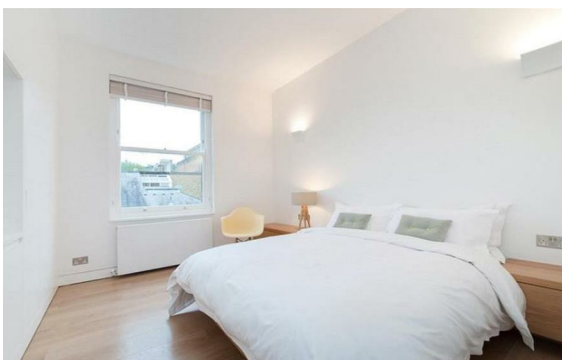
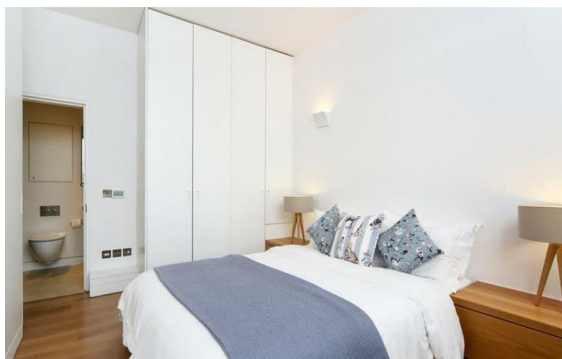
£850 Per Month



info@newingtonstates.com

<http://www.newingtonstates.com>

020 7724 2233



A beautifully presented two double bedroom apartment set on the second floor of a charming period conversion. The property benefits from tall ceilings and an abundance of natural light throughout.

Perfectly positioned on Edbrooke Road, one of the area's most sought-after addresses, residents enjoy peaceful, tree-lined surroundings with easy access to local cafés, restaurants, and the picturesque Regent's Canal. Excellent transport links are close by, with Maida Vale and Warwick Avenue stations just a short walk away.

EPC rating: C

Energy Efficiency Rating: C

Agents Note: Whilst every care has been taken to prepare these particulars, they are for guidance purposes only. All measurements are approximate and are for general guidance purposes only and whilst every care has been taken to ensure their accuracy, they should not be relied upon and potential buyers/tenants are advised to recheck the measurements.

NEWINGTON LONDON

60 Upper Montagu Street

London

W1H 1SN

020 7724 2233

info@newingtonstates.com

<http://www.newingtonstates.com>