



NEWINGTON
LONDON

3 Bedrooms

Apartment

Located in London

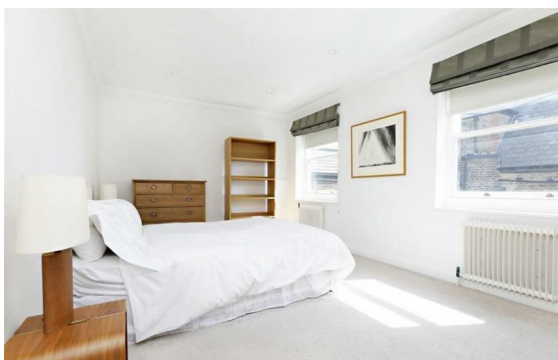
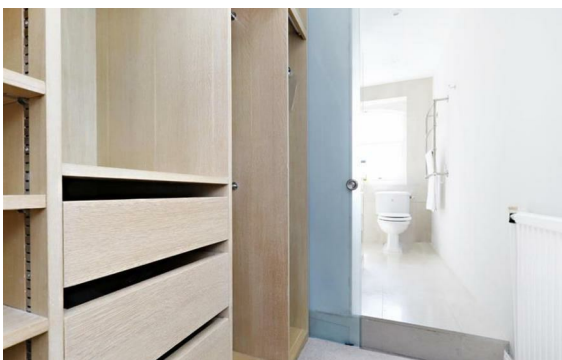
£1,050 Per Month



info@newingtonstates.com

<http://www.newingtonstates.com>

020 7724 2233



A spacious three-bedroom apartment situated on the 5th floor of a well-positioned building in Marylebone. The property features two generously sized double bedrooms with excellent storage, a further single bedroom, and two bathrooms (one en suite). The grand reception room enjoys a quiet outlook, complemented by a good-sized separate fully fitted kitchen.

The apartment is set within a popular building that provides residents with lift access, concierge services, and an enviable location close to Regent's Park, Marylebone High Street, and the West End. Baker Street and Marylebone stations are just moments away, offering superb transport connections across London, including access to multiple Underground lines and national rail services.

EPC rating: D

Energy Efficiency Rating: D

Agents Note: Whilst every care has been taken to prepare these particulars, they are for guidance purposes only. All measurements are approximate and are for general guidance purposes only and whilst every care has been taken to ensure their accuracy, they should not be relied upon and potential buyers/tenants are advised to recheck the measurements.

NEWINGTON LONDON

60 Upper Montagu Street

London

W1H 1SN

020 7724 2233

info@newingtonstates.com

<http://www.newingtonstates.com>