



NEWINGTON LONDON

4 Bedrooms

Apartment

Located in London

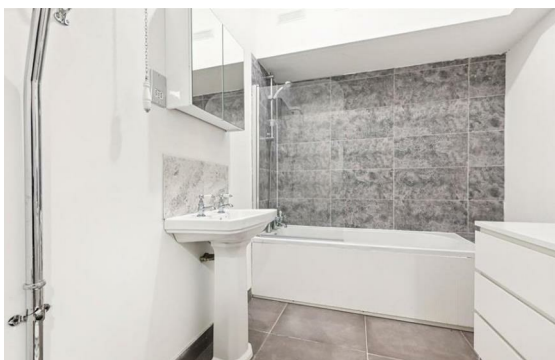
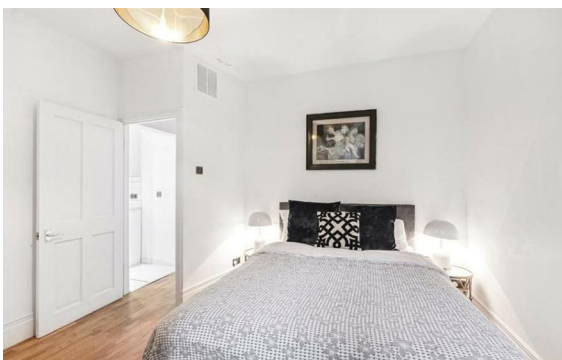
£1,530 Per Month



info@newingtonstates.com

<http://www.newingtonstates.com>

020 7724 2233



A newly refurbished lower-ground-floor 4-bedroom apartment in an impressive red-brick mansion block. Offering lovely accommodation with four bedrooms, one large reception rooms, a separate kitchen, and three bathrooms (one en-suite).

Ideally located 0.2 miles from Edgware Road Underground Station (Circle, District and Hammersmith & City lines).

EPC rating: D

Energy Efficiency Rating: D

Agents Note: Whilst every care has been taken to prepare these particulars, they are for guidance purposes only. All measurements are approximate and are for general guidance purposes only and whilst every care has been taken to ensure their accuracy, they should not be relied upon and potential buyers/tenants are advised to recheck the measurements.

NEWINGTON LONDON

60 Upper Montagu Street

London

W1H 1SN

020 7724 2233

info@newingtonstates.com

<http://www.newingtonstates.com>