



NEWINGTON
LONDON

3 Bedrooms

Apartment

Located in London

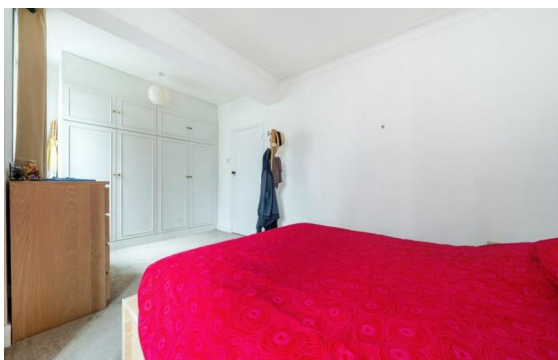
£1,020 Per Month



info@newingtonstates.com

<http://www.newingtonstates.com>

020 7724 2233



A well-presented, three-bedroom, ground-floor apartment in this secure portered apartment block close to Marylebone and Baker Street stations benefits from a large private garden and additional storage space. The property comprises three bedrooms, a shower room (en suite), a family bathroom, and a double aspect open plan kitchen/reception. Further benefits include good storage, natural light, a dishwasher and a separate washer/ dryer.

Conveniently located within easy walking distance of both Marylebone railway station and Baker Street Underground Station (Metropolitan, Jubilee, Bakerloo, Hammersmith & City Lines).

EPC rating: C

Energy Efficiency Rating: C

Agents Note: Whilst every care has been taken to prepare these particulars, they are for guidance purposes only. All measurements are approximate and are for general guidance purposes only and whilst every care has been taken to ensure their accuracy, they should not be relied upon and potential buyers/tenants are advised to recheck the measurements.

NEWINGTON LONDON

60 Upper Montagu Street

London

W1H 1SN

020 7724 2233

info@newingtonstates.com

<http://www.newingtonstates.com>