



NEWINGTON
LONDON

2 Bedrooms

Apartment

Located in London

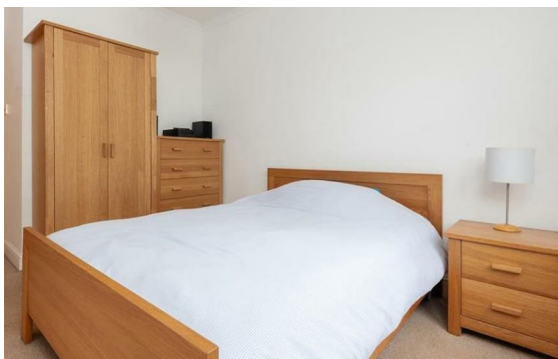
£640 Per Month



info@newingtonstates.com

<http://www.newingtonstates.com>

020 7724 2233



A bright, two-bedroom apartment situated on the second floor (with lift) of this purpose built block in Fitzrovia. The property comprises a bright and spacious reception room, semi open plan kitchen, double bedroom, single bedroom, bathroom and guest cloak room. Further benefits include wood flooring, communal courtyard and lift access.

Hallam Street is superbly located for easy access to Gt Portland Street and Warren Street underground stations and a short walk to the open spaces of Regent's Park.

EPC rating: C

Energy Efficiency Rating: C

Agents Note: Whilst every care has been taken to prepare these particulars, they are for guidance purposes only. All measurements are approximate and are for general guidance purposes only and whilst every care has been taken to ensure their accuracy, they should not be relied upon and potential buyers/tenants are advised to recheck the measurements.

NEWINGTON LONDON

60 Upper Montagu Street

London

W1H 1SN

020 7724 2233

info@newingtonstates.com

<http://www.newingtonstates.com>