



NEWINGTON
LONDON

2 Bedrooms

Apartment

Located in London

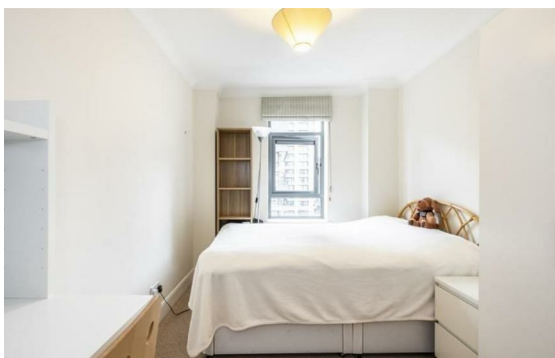
£675 Per Month



info@newingtonstates.com

<http://www.newingtonstates.com>

020 7724 2233



Recently redecorated apartment set on the third floor (with lift) of this purpose built residential building in Fitzrovia W1. Offering a large reception room with large windows letting in plenty of natural light, a fully fitted kitchen, wooden flooring throughout and a communal courtyard.

Located conveniently for Warren Street and Goodge Street stations, with local shops and restaurants of Charlotte Street only a short walk away. The development is also close to Bloomsbury, Marylebone, Covent Garden and Mayfair area's as well as Oxford Street.

EPC rating: C

Energy Efficiency Rating: C

Agents Note: Whilst every care has been taken to prepare these particulars, they are for guidance purposes only. All measurements are approximate and are for general guidance purposes only and whilst every care has been taken to ensure their accuracy, they should not be relied upon and potential buyers/tenants are advised to recheck the measurements.

NEWINGTON LONDON

60 Upper Montagu Street

London

W1H 1SN

020 7724 2233

info@newingtonstates.com

<http://www.newingtonstates.com>