



NEWINGTON
LONDON

1 Bedrooms

Apartment

Located in London

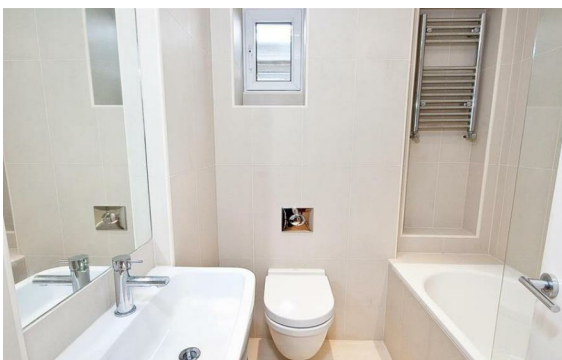
£585 Per Month



info@newingtonstates.com

<http://www.newingtonstates.com>

020 7724 2233



An excellently presented one-bedroom apartment situated on the first floor of a period conversion close to Marylebone High Street and nearby to Regents Park. This bright and airy flat comprises a large reception room at the front of the property with beautiful sash windows and wood floors. There is a large eat in kitchen and located at the rear of the property is the double bedroom with ample storage and leads through to the bathroom with shower over the bath. .

Marylebone is well located for transport through a large number of underground services, including Baker Street for access to Canary Wharf via the Jubilee Line. Other stations include Marble Arch (Central Line), Regents Park (Bakerloo Line) and Bond Street (Central Line & Jubilee Line).

EPC rating: C

Energy Efficiency Rating: C

Agents Note: Whilst every care has been taken to prepare these particulars, they are for guidance purposes only. All measurements are approximate and are for general guidance purposes only and whilst every care has been taken to ensure their accuracy, they should not be relied upon and potential buyers/tenants are advised to recheck the measurements.

NEWINGTON LONDON

60 Upper Montagu Street

London

W1H 1SN

020 7724 2233

info@newingtonstates.com

<http://www.newingtonstates.com>