

NEWINGTON
LONDON

3 Bedrooms

Apartment

Located in London

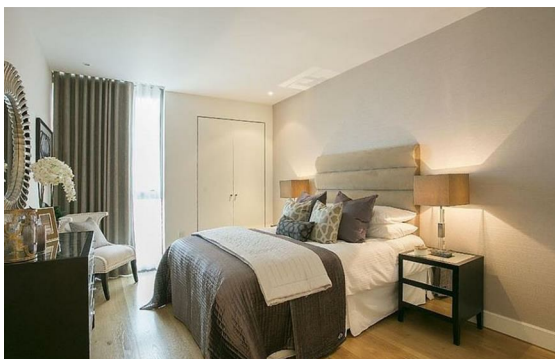
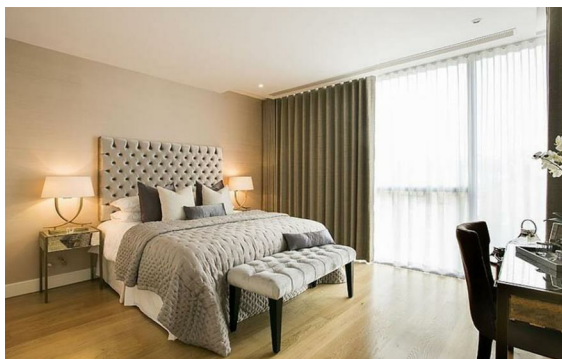
£1,475 Per Month



info@newingtonstates.com

<http://www.newingtonstates.com>

020 7724 2233



We are delighted to present this gorgeous three-bedroom apartment situated moments from the Baker Street in the well maintained block. Comprising of three spacious bedrooms, two modern bathrooms, open plan fitted kitchen leading into lovely reception room with high ceiling and plenty of storage. Further benefits include porterage and wooden flooring throughout.

Broadley Terrace is well located for transport links at Marylebone and Baker Street. Both Regent's Park and Hyde Park are within easy reach and Marylebone Village is a short walk away.

EPC rating: B

Energy Efficiency Rating: B

Agents Note: Whilst every care has been taken to prepare these particulars, they are for guidance purposes only. All measurements are approximate and are for general guidance purposes only and whilst every care has been taken to ensure their accuracy, they should not be relied upon and potential buyers/tenants are advised to recheck the measurements.

NEWINGTON LONDON

60 Upper Montagu Street

London

W1H 1SN

020 7724 2233

info@newingtonstates.com

<http://www.newingtonstates.com>