



NEWINGTON  
LONDON

1 Bedrooms

Apartment

Located in London

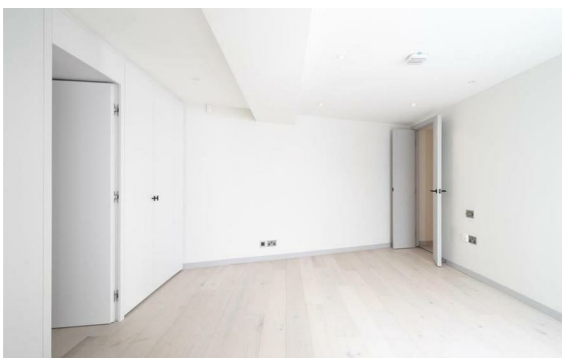
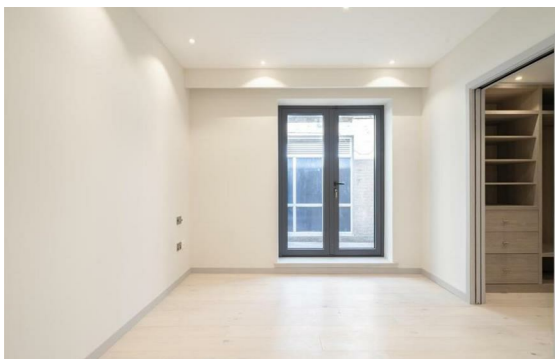
£700 Per Month



info@newingtonstates.com

<http://www.newingtonstates.com>

020 7724 2233



# NEWINGTON LONDON

60 Upper Montagu Street

London

W1H 1SN

020 7724 2233

[info@newingtonstates.com](mailto:info@newingtonstates.com)

A new build one-bedroom apartment providing luxurious living in a sought-after location. Located near to St John's Wood and close to Regents Park, this contemporary apartment provides top class living accommodation in a secure block. Benefiting from wooden floors throughout the property features a spacious open plan kitchen and living area. The kitchen area boasts slick modern design and appliances. The living area flows naturally into an outdoor terrace/ balcony area.

Located close to St John's Wood with access to the Jubilee line providing direct links into Central London and Canary wharf. Local amenities can be found on the High Street located close by.

EPC rating: B

## Energy Efficiency Rating: B

Agents Note: Whilst every care has been taken to prepare these particulars, they are for guidance purposes only. All measurements are approximate and are for general guidance purposes only and whilst every care has been taken to ensure their accuracy, they should not be relied upon and potential buyers/tenants are advised to recheck the measurements.

<http://www.newingtonstates.com>