



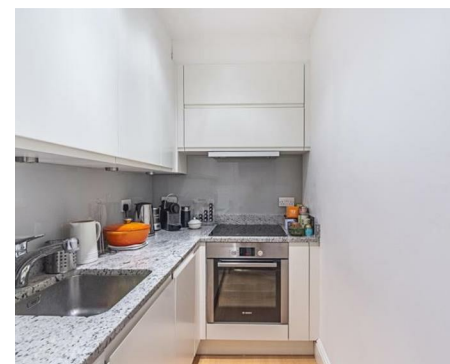
NEWINGTON
LONDON

1 Bedrooms

Apartment

Located in London

£700 Per Month



info@newingtonstates.com

<http://www.newingtonstates.com>

020 7724 2233



NEWINGTON LONDON

60 Upper Montagu Street

London

W1H 1SN

020 7724 2233

info@newingtonstates.com

Immaculately designed one-bedroom apartment that offers an abundance of light and uninterrupted views across London. The flat is well balanced with lots of storage and a private balcony. Comprising of double bedroom, modern bathroom, fitted kitchen and spacious reception with parquet flooring throughout.

Hyde Park, Connaught Village, Marble Arch and Oxford Street are minutes away. The transport facilities within the vicinity are Marble Arch (Central line), Edgware Road (Hammersmith & City, Circle, District and Bakerloo lines) as well as the National Rail and Heathrow Express from Paddington.

EPC rating: C

Energy Efficiency Rating: C

Agents Note: Whilst every care has been taken to prepare these particulars, they are for guidance purposes only. All measurements are approximate and are for general guidance purposes only and whilst every care has been taken to ensure their accuracy, they should not be relied upon and potential buyers/tenants are advised to recheck the measurements.

<http://www.newingtonstates.com>