



NEWINGTON  
LONDON

1 Bedrooms

Apartment

Located in London

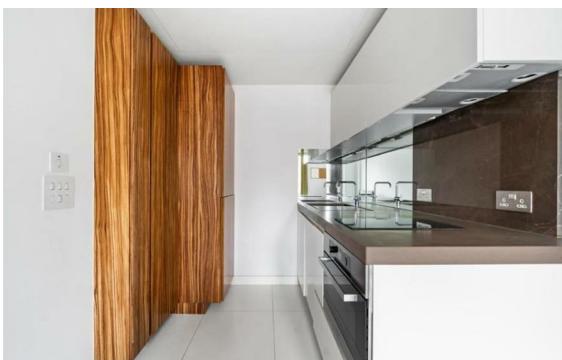
£680 Per Month



info@newingtonstates.com

<http://www.newingtonstates.com>

020 7724 2233



Superb one bedroom apartment with amazing panoramic views on the 8th floor of this luxury development moments from Regent's Park and Great Portland Street Tube (Hammersmith & City, Circle & Metropolitan Lines) offering easy access to the shops, restaurants and transport facilities of the West End and City. The open spaces of Regents Park are a short stroll away as are the amenities of popular Marylebone and Fitzrovia.

The property has been interior designed and finished to an exceptional standard to comprise entrance hall, reception room with fully fitted open plan kitchen with high quality integrated appliances, double bedroom with excellent storage and marble tiled bathroom.

EPC rating: B

## Energy Efficiency Rating: B

Agents Note: Whilst every care has been taken to prepare these particulars, they are for guidance purposes only. All measurements are approximate and are for general guidance purposes only and whilst every care has been taken to ensure their accuracy, they should not be relied upon and potential buyers/tenants are advised to recheck the measurements.

# NEWINGTON LONDON

60 Upper Montagu Street

London

W1H 1SN

020 7724 2233

[info@newingtonstates.com](mailto:info@newingtonstates.com)

<http://www.newingtonstates.com>