



NEWINGTON  
LONDON

2 Bedrooms

Apartment

Located in London

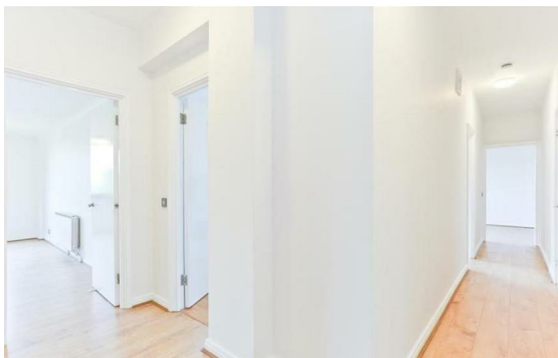
£780 Per Month



info@newingtonstates.com

<http://www.newingtonstates.com>

020 7724 2233



# NEWINGTON LONDON

60 Upper Montagu Street

London

W1H 1SN

020 7724 2233

[info@newingtonstates.com](mailto:info@newingtonstates.com)

A beautifully presented and situated within a secured purpose built development is this two-bedroom apartment with secure underground parking. Property comprises of entrance hallway, bright reception, fully fitted kitchen, two double bedrooms with master en-suite and family bathroom. The apartment is decorated to a high standard with further benefits to include wooden flooring, porter and lift.

Ideally located for a host of transport links to include Edgware Road (Circle, District, Hammersmith & City), Edgware Road (Bakerloo) and Marylebone station.

EPC rating: B

## Energy Efficiency Rating: B

Agents Note: Whilst every care has been taken to prepare these particulars, they are for guidance purposes only. All measurements are approximate and are for general guidance purposes only and whilst every care has been taken to ensure their accuracy, they should not be relied upon and potential buyers/tenants are advised to recheck the measurements.

<http://www.newingtonstates.com>