



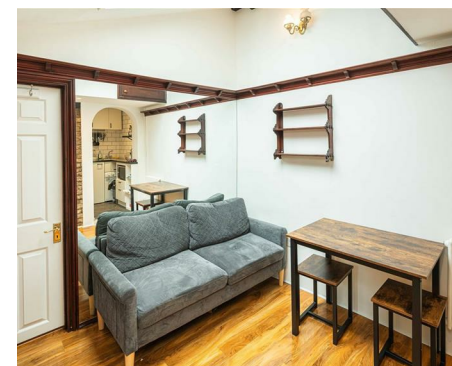
NEWINGTON
LONDON

1 Bedrooms

Apartment

Located in London

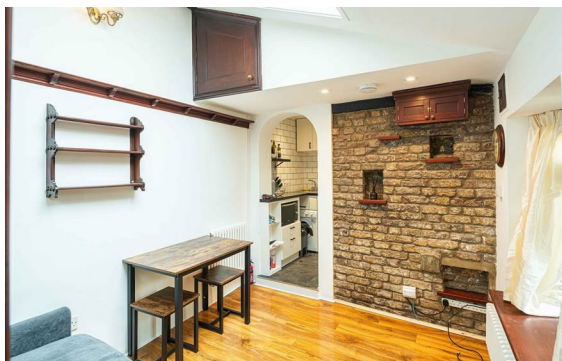
£450 Per Month



info@newingtonstates.com

<http://www.newingtonstates.com>

020 7724 2233



Newington Estates are delighted to present you this bright apartment in this attractive conversion. The property has generous out door space with its own entrance. The property benefits from a reception room with wood floors and a kitchen with modern fitted kitchen. The bedroom offers a double sized bed with built in storage and a modern shower room.

Lisson Street is ideally situated close to numerous transport links. Baker Street underground station is within easy reach as are Marylebone and Paddington mainline train stations. EPC RATING: E

Energy Efficiency Rating: C

Agents Note: Whilst every care has been taken to prepare these particulars, they are for guidance purposes only. All measurements are approximate and are for general guidance purposes only and whilst every care has been taken to ensure their accuracy, they should not be relied upon and potential buyers/tenants are advised to recheck the measurements.

NEWINGTON LONDON

60 Upper Montagu Street

London

W1H 1SN

020 7724 2233

info@newingtonestates.com

<http://www.newingtonestates.com>