



NEWINGTON  
LONDON

2 Bedrooms

Apartment

Located in London

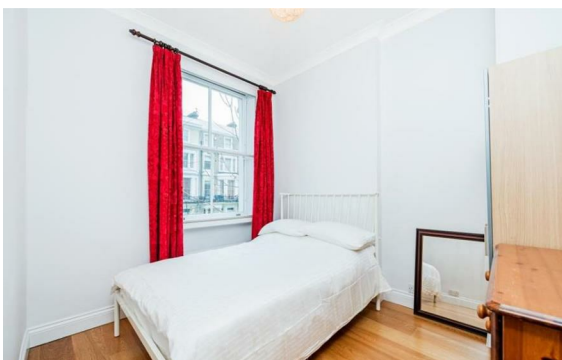
£1,160 Per Month



info@newingtonstates.com

<http://www.newingtonstates.com>

020 7724 2233



Newington Estates are delighted to present this beautiful two-bedroom apartment located in the heart of Marylebone and moments away from it's amenities. Comprising of two lovely bedrooms, two modern bathrooms, large reception room with plenty of natural light and wooden flooring leading into fitted kitchen with ample storage and excellent appliances.

Montagu Square is a beautiful garden square ideally located in the heart of Marylebone and perfectly located for the boutique shops of Marylebone High Street and Baker Street, transport links and the open spaces of both Hyde Park and Regents Park.

EPC rating: F

## Energy Efficiency Rating: F

Agents Note: Whilst every care has been taken to prepare these particulars, they are for guidance purposes only. All measurements are approximate and are for general guidance purposes only and whilst every care has been taken to ensure their accuracy, they should not be relied upon and potential buyers/tenants are advised to recheck the measurements.

# NEWINGTON LONDON

60 Upper Montagu Street

London

W1H 1SN

020 7724 2233

[info@newingtonestates.com](mailto:info@newingtonestates.com)

<http://www.newingtonestates.com>