



NEWINGTON LONDON

3 Bedrooms

Apartment

Located in London

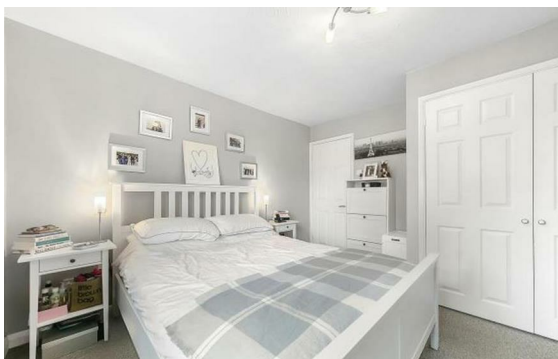
£1,100 Per Month



info@newingtonstates.com

<http://www.newingtonstates.com>

020 7724 2233



Newington's are pleased to present you this charming location in the heart of Marylebone. As you step into this delightful property, you are greeted by a bright and spacious reception room offering plenty of natural light. The kitchen is fully integrated. The property boasts wooden flooring in the reception area, adding a touch of elegance, while the bedrooms are adorned with cosy carpets. With lift access adding to the convenience, this property truly has it all.

One of the standout features of this apartment is its prime location. Situated in the heart of Marylebone, you'll find yourself surrounded by an array of amenities, trendy cafes, and boutique shops. Baker Street station is just a stone's throw away, providing easy access to the Jubilee, Bakerloo, and Hammersmith & City lines. Additionally, Marylebone station is within reach, offering services on the Chiltern Main Line. EPC RATING: C

Energy Efficiency Rating:

Agents Note: Whilst every care has been taken to prepare these particulars, they are for guidance purposes only. All measurements are approximate and are for general guidance purposes only and whilst every care has been taken to ensure their accuracy, they should not be relied upon and potential buyers/tenants are advised to recheck the measurements.

NEWINGTON LONDON

60 Upper Montagu Street

London

W1H 1SN

020 7724 2233

info@newingtonstates.com

<http://www.newingtonstates.com>