



NEWINGTON  
LONDON

2 Bedrooms

Apartment

Located in London

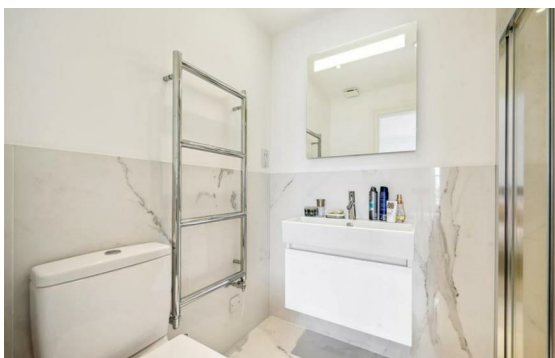
£875 Per Month



info@newingtonstates.com

<http://www.newingtonstates.com>

020 7724 2233



# NEWINGTON LONDON

60 Upper Montagu Street

London

W1H 1SN

020 7724 2233

[info@newingtonstates.com](mailto:info@newingtonstates.com)

A modern to bedroom apartment with a neutral contemporary finish with outdoor space tucked away in a private gated development with gym and pool. Offering bright and neutral interiors the property has been decorated to a contemporary finish. The property offers a welcoming entrance hall which leads to the reception room and open plan kitchen, Two double bedrooms both with fitted wardrobes, and two modern bathrooms.

Situated in a private gated development with on site security the property has a designated parking space and residents benefits from use of a gym and indoor pool. Located conveniently in north Marylebone with access to Marylebone Station and Regents Park. EPC RATING: C

## Energy Efficiency Rating:

Agents Note: Whilst every care has been taken to prepare these particulars, they are for guidance purposes only. All measurements are approximate and are for general guidance purposes only and whilst every care has been taken to ensure their accuracy, they should not be relied upon and potential buyers/tenants are advised to recheck the measurements.

<http://www.newingtonstates.com>