



NEWINGTON
LONDON

2 Bedrooms

Apartment

Located in London

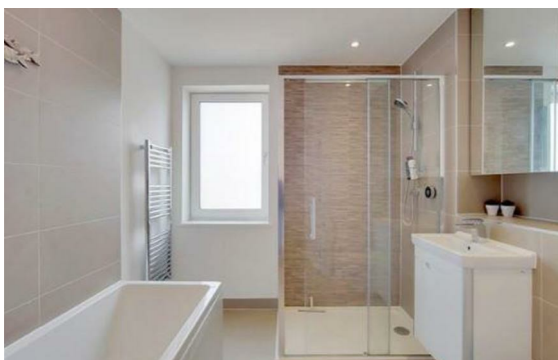
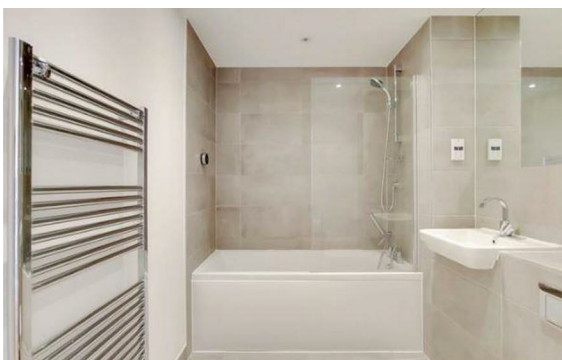
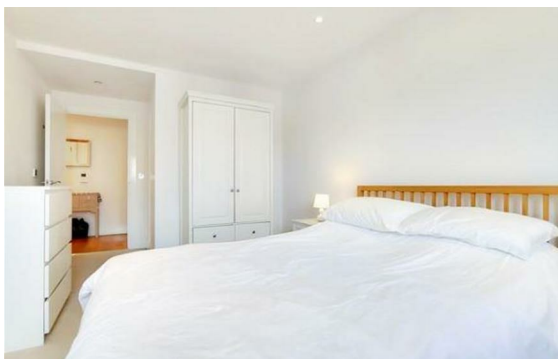
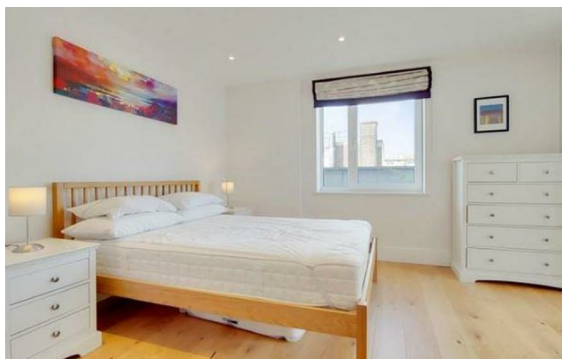
£975 Per Month



info@newingtonstates.com

<http://www.newingtonstates.com>

020 7724 2233



NEWINGTON LONDON

60 Upper Montagu Street

London

W1H 1SN

020 7724 2233

info@newingtonstates.com

A very well presented and spacious apartment set within this popular gated development. The property comprises of two double bedrooms, a large and spacious reception / dining room, two bathrooms (one en-suite) and a fully fitted kitchen. The apartment benefits from having an abundance of natural light and balcony access.

Further features include a 24 hour concierge service, gymnasium and swimming pool for the exclusive use of the residents and underground parking. Palgrave Gardens is ideally located within moments of Baker Street & Marylebone Underground stations and walking distance to an array of shops, restaurants and bars as well as the open spaces of Regent's Park. EPC RATING: C

Energy Efficiency Rating: C

Agents Note: Whilst every care has been taken to prepare these particulars, they are for guidance purposes only. All measurements are approximate and are for general guidance purposes only and whilst every care has been taken to ensure their accuracy, they should not be relied upon and potential buyers/tenants are advised to recheck the measurements.

<http://www.newingtonstates.com>