



NEWINGTON
LONDON

2 Bedrooms

Apartment

Located in London

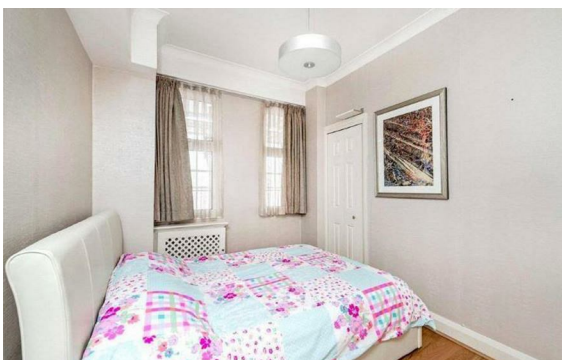
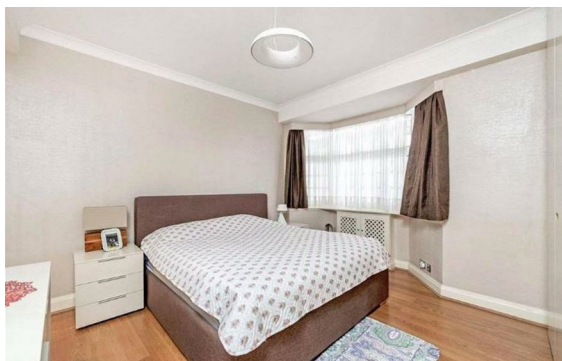
£790 Per Month



info@newingtonstates.com

<http://www.newingtonstates.com>

020 7724 2233



Newington Estates are delighted to present you this stunning two bedroom apartment located in arguably the most sought after block in Hyde Park . The accommodation comprises of spacious reception room, fully fitted kitchen, master bedroom with ample storage an en-suite, and further family bathroom. Added benefits include lifts and 24 hour concierge.

Norfolk Crescent is wonderfully located just a short walk from Marble Arch tube station, Paddington, Edgware Road, Oxford Street and the open spaces of Hyde Park. EPC RATING C

Energy Efficiency Rating:

Agents Note: Whilst every care has been taken to prepare these particulars, they are for guidance purposes only. All measurements are approximate and are for general guidance purposes only and whilst every care has been taken to ensure their accuracy, they should not be relied upon and potential buyers/tenants are advised to recheck the measurements.

NEWINGTON LONDON

60 Upper Montagu Street

London

W1H 1SN

020 7724 2233

info@newingtonestates.com

<http://www.newingtonestates.com>