

NEWINGTON
LONDON

2 Bedrooms

Apartment

Located in London

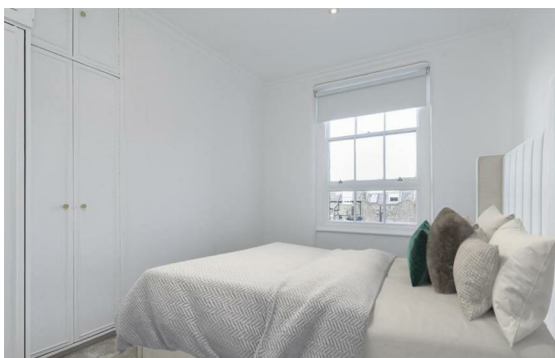
£1,105 Per Month



info@newingtonstates.com

<http://www.newingtonstates.com>

020 7724 2233



A beautifully presented two-bedroom apartment situated on the 5th floor of this popular red brick block in the heart of Marylebone. Comprising of two lovely bedrooms, two bathrooms, spacious reception room with plenty of natural light and luxurious furniture leading into modern fully fitted kitchen with excellent appliances and ample storage. Further benefits include porterage, wooden flooring throughout and gorgeous views.

Well located for transport links in and out of central London, Seymour Place is located just west of Gloucester Place and Baker Street in Marylebone. Oxford Street, Hyde Park and Regent's Park are all close by, as is Marylebone High Street.

EPC rating: E

Energy Efficiency Rating: E

Agents Note: Whilst every care has been taken to prepare these particulars, they are for guidance purposes only. All measurements are approximate and are for general guidance purposes only and whilst every care has been taken to ensure their accuracy, they should not be relied upon and potential buyers/tenants are advised to recheck the measurements.

NEWINGTON LONDON

60 Upper Montagu Street

London

W1H 1SN

020 7724 2233

info@newingtonstates.com

<http://www.newingtonstates.com>