



NEWINGTON
LONDON

1 Bedrooms

Apartment

Located in London

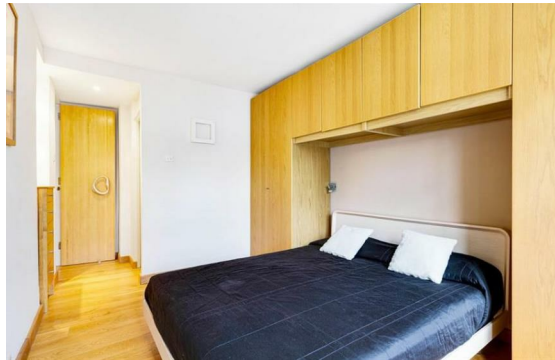
£665 Per Month



info@newingtonstates.com

<http://www.newingtonstates.com>

020 7724 2233



A well presented one-bedroom apartment located set within a portered block which benefits from communal gardens and secure underground parking. Comprising of one large double bedroom with built in storage, one bathroom, bright and spacious reception room with open plan fitted kitchen. Further benefits include wooden flooring, lift and great location.

The property is well located with access to the amenities of St Johns Wood High Street & transport links of St Johns Wood Tube (Jubilee Line).

EPC rating: C

Energy Efficiency Rating: C

Agents Note: Whilst every care has been taken to prepare these particulars, they are for guidance purposes only. All measurements are approximate and are for general guidance purposes only and whilst every care has been taken to ensure their accuracy, they should not be relied upon and potential buyers/tenants are advised to recheck the measurements.

NEWINGTON LONDON

60 Upper Montagu Street

London

W1H 1SN

020 7724 2233

info@newingtonstates.com

<http://www.newingtonstates.com>