



NEWINGTON
LONDON

1 Bedrooms

Apartment

Located in London

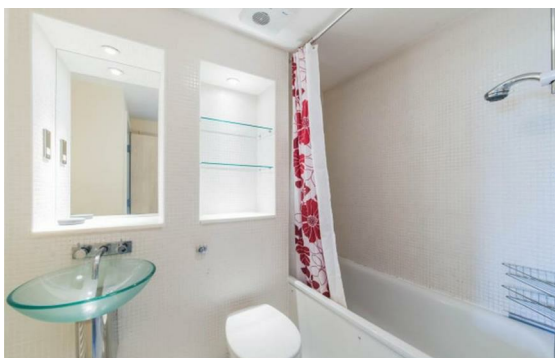
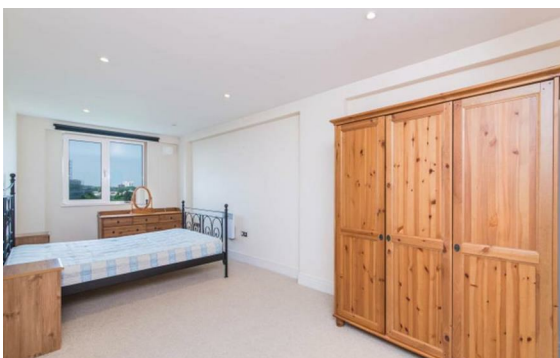
£660 Per Month



info@newingtonstates.com

<http://www.newingtonstates.com>

020 7724 2233



NEWINGTON LONDON

60 Upper Montagu Street

London

W1H 1SN

020 7724 2233

info@newingtonstates.com

A spacious and well presented one bedroom flat on the first floor of this well regarded portered building is available to rent. Accommodation comprises; wood floors to the reception area, double bedroom with ample storage, a family bathroom and a good sized reception room overlooking the communal gardens.

The property is located opposite Lord's Cricket Ground less than half a mile from Regent's Park, and close to the shops and restaurants of both St John's Wood High Street and Little Venice. St John's Wood Tube (Jubilee Line) is the closest underground station (0.5 miles). EPC RATING: C

Energy Efficiency Rating: B

Agents Note: Whilst every care has been taken to prepare these particulars, they are for guidance purposes only. All measurements are approximate and are for general guidance purposes only and whilst every care has been taken to ensure their accuracy, they should not be relied upon and potential buyers/tenants are advised to recheck the measurements.

<http://www.newingtonstates.com>